

**Spectralink 72x2, 75x2, 76x2, 77x2 and Butterfly Series**

# **Handset Management User Guide**

## **Copyright Notice**

© 2014 Spectralink Corporation All rights reserved. Spectralink™, the Spectralink logo and the names and marks associated with Spectralink's products are trademarks and/or service marks of Spectralink Corporation and are common law marks in the United States and various other countries. All other trademarks are property of their respective owners. No portion hereof may be reproduced or transmitted in any form or by any means, for any purpose other than the recipient's personal use, without the express written permission of Spectralink.

All rights reserved under the International and pan-American Copyright Conventions. No part of this manual, or the software described herein, may be reproduced or transmitted in any form or by any means, or translated into another language or format, in whole or in part, without the express written permission of Spectralink Corporation.

Do not remove (or allow any third party to remove) any product identification, copyright or other notices.

## **Notice**

Spectralink Corporation has prepared this document for use by Spectralink personnel and customers. The drawings and specifications contained herein are the property of Spectralink and shall be neither reproduced in whole or in part without the prior written approval of Spectralink, nor be implied to grant any license to make, use, or sell equipment manufactured in accordance herewith.

Spectralink reserves the right to make changes in specifications and other information contained in this document without prior notice, and the reader should in all cases consult Spectralink to determine whether any such changes have been made.

NO REPRESENTATION OR OTHER AFFIRMATION OF FACT CONTAINED IN THIS DOCUMENT INCLUDING BUT NOT LIMITED TO STATEMENTS REGARDING CAPACITY, RESPONSE-TIME PERFORMANCE, SUITABILITY FOR USE, OR PERFORMANCE OF PRODUCTS DESCRIBED HEREIN SHALL BE DEEMED TO BE A WARRANTY BY SPECTRALINK FOR ANY PURPOSE, OR GIVE RISE TO ANY LIABILITY OF SPECTRALINK WHATSOEVER.

Spectralink Corporation,  
2550 55th Street,  
Boulder CO 80301,  
USA

Spectralink Europe ApS,  
Langmarksvej 34,  
8700 Horsens,  
Denmark

# Contents

## Getting Started

<b>Overview of the User Interface</b> .....	<b>2</b>
<b>Overview of the Programming Kit</b> .....	<b>4</b>
<b>Starting the Handset Management Tool</b> .....	<b>4</b>

## Using the Handset Management Tool

<b>Managing Phone Book and Speed Dial List</b> .....	<b>5</b>
<b>Managing Message Templates</b> .....	<b>9</b>
<b>Managing Settings</b> .....	<b>13</b>
<b>Managing Logos and Standby text</b> .....	<b>16</b>

## Troubleshooting

<b>General troubleshooting information</b> .....	<b>18</b>
--	-----------

# Chapter 1: Getting Started

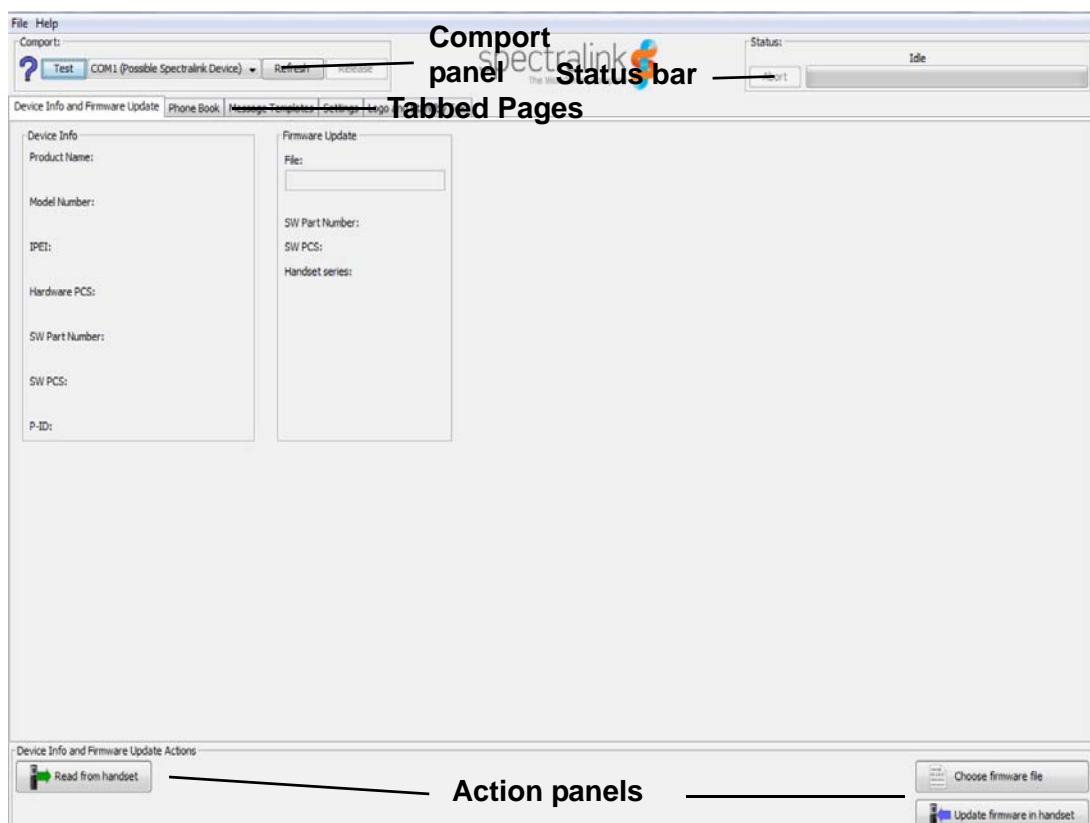
This user guide describes the Spectralink Handset Management Tool, used for configuration, customization, and firmware update of Spectralink 72x2, 75x2, 76x2, 77x2, and Butterfly handsets.

## Overview of the User Interface

The Spectralink Handset Management Tool main window has four main areas.

- Comport panel, for handling Spectralink USB devices/chargers.
- Tabbed pages where you manage the phone book and configurations.
- Status bar that shows the current status of running actions.
- Actions panel (in the bottom) used for applying configurations and load/read from handset/files.

**Figure 1** Handset Management Main window



## Overview of Menus and Tabbed Pages

### Menus

**Table 1** Menu items

Menu item	Description
<b>File</b>	<ul style="list-style-type: none"> <li>Exit</li> </ul>
<b>Help</b>	<ul style="list-style-type: none"> <li>Comport driver: Instructions in where the USB Com driver can be found and how to install it</li> <li>About</li> </ul>

### Tabbed Pages

**Table 2** Tabbed pages

Tab	Description
<b>Device info and Firmware Update</b>	<ul style="list-style-type: none"> <li>Product Name</li> <li>Model Number</li> <li>IPEI number</li> <li>Hardware PCS</li> <li>SW (Software) Part Number</li> <li>SW PCS</li> <li>P-ID</li> <li>Firmware Update</li> </ul>
<b>Phone Book</b>	Phone book and speed dial management
<b>Message Templates</b>	Message template management
<b>Settings</b>	<ul style="list-style-type: none"> <li>Sound and Feedback: Ringing tone, Volumes, Vibrator, Headset, Silent mode</li> <li>Functionality: Language, Economy mode, Auto key lock, Absent in charger, Auto Answer, Out of range, Alarm key, Backlight</li> <li>Long Key: Speed dial and MSF Management</li> </ul>
<b>Logo and Standby Text</b>	<ul style="list-style-type: none"> <li>Configure custom Logo and Standby Text.</li> </ul>

## Overview of the Programming Kit

To use all the features of the handset management tool, you need the following.

- The appropriate Spectralink handset management cradle, and USB cable for the cradle.
- The Handset Management Tool, which you can download from <http://support.spectralink.com/products/dect/spectralink-xx-series>
- The latest USB COM driver, which you can download from <http://www.ftdichip.com/Drivers/VCP.htm>. You can download the Installation Guide for the driver from <http://www.ftdichip.com/Documents/InstallGuides.htm>.



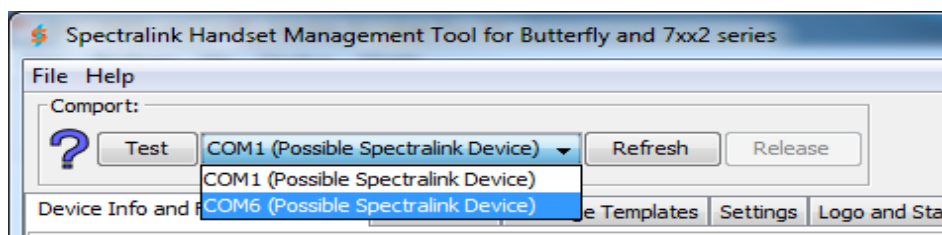
### Note

For the Spectralink 7xx2-series handset. When the handset management cradle is to be used for charging, the USB cable must be removed. The USB cable shall only be connected when updating the handset's firmware or using the Spectralink Handset Management tool.

## Starting the Handset Management Tool

Before you start managing your handset, verify that the handset is fully charged.

- 1 Connect the USB cable to the computer's USB port and the Spectralink handset management cradle.
- 2 Turn on the handset and place it in the cradle.
- 3 Open the Handset Management Tool.
- 4 From the Comport panel (in the upper left corner), select the appropriate comport from the list.



- 5 Click **Test** to see if the program is connected to the handset.



### Note

Always turn on the handset before you place it in the cradle that is connected to the computer containing the management program.

# Chapter 2: Using the Handset Management Tool

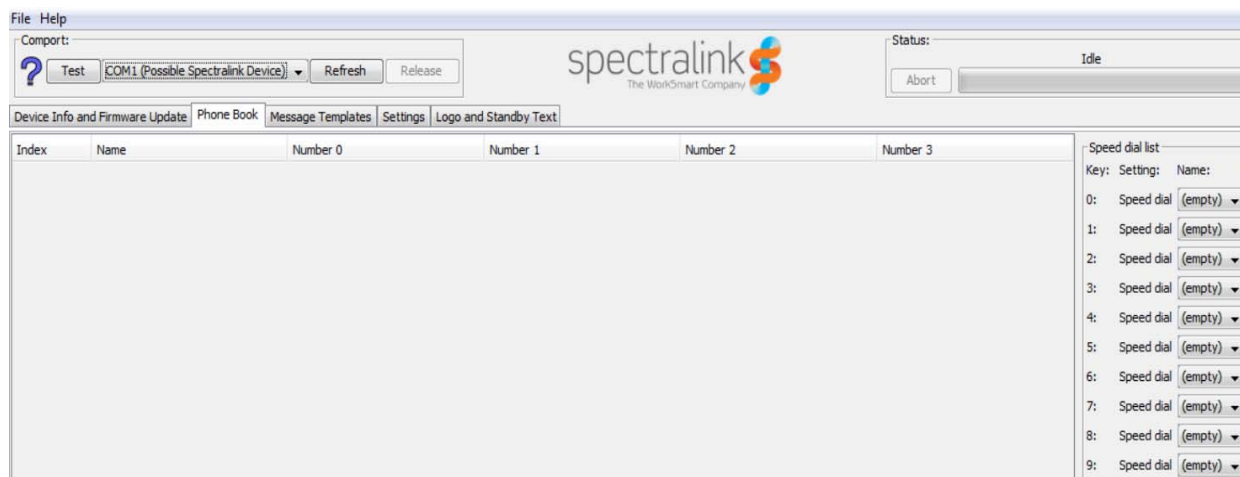
## Managing Phone Book and Speed Dial List

Using the Handset Management Tool, you can store, change and delete numbers and names in the phone book and speed dial list or share phone books and speed dial lists with other handsets.

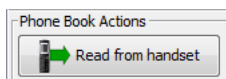
The Spectralink 75x2, 76x2, and 77x2 series phone book can store up to 350 names with four numbers each (2 standard and 2 SIP numbers). The Butterfly and 72x2 series can store up to 50 names with four standard numbers each. All standard numbers can have a maximum of 24 digits including spaces. All SIP numbers can have a maximum of 64 characters, including "SIP:" start sequence. Names are stored alphabetically starting with their first character and can consist of up to 24 characters, including spaces.

### Store Names and Numbers

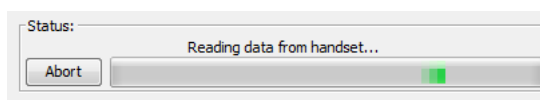
- 1 Click the **Phone Book** tab.



- 2 Click **Read from handset** to read the names and numbers from the handset (if any).



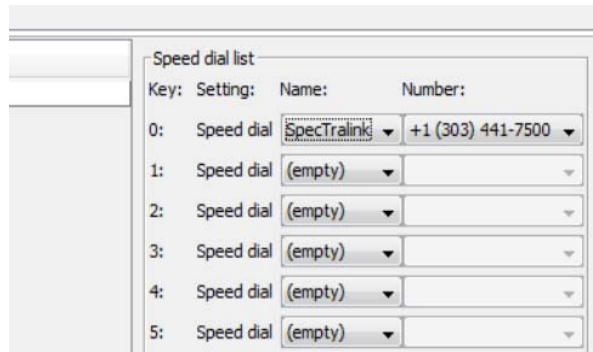
- 3 The Status Bar shows read data process.



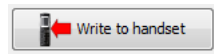
- 4 Click **Add new contact**, then enter name and number. Repeat this step as many times as required.



- 5 Configure the Speed Dial list by choosing names and numbers from the drop-down menus.



- 6 Click **Write to handset**. The **Phonebook write option** dialog appears.



- 7 Click either **Add contacts to handset phonebook** or **Overwrite handset phonebook**, and then click **OK**.



## Change Names and Numbers

- 1 Click the **Phone Book** tab.
- 2 Click **Read from handset** to read the names and numbers from the handset.
- 3 Select the name(s) and/or number(s) you want to change and make the appropriate changes.
- 4 Configure the Speed Dial list by choosing names and numbers from the drop-down menus. To delete a speed dial entry select (empty).
- 5 Click **Write to handset**. The **Phonebook write option** dialog appears.
- 6 Click **Overwrite handset phonebook**, and then click **OK**.





## Sharing the Phone Book and Speed Dial list with other Handsets

You can make a copy of a phone book and speed dial list or save the phone book to a file to share it with other handsets.

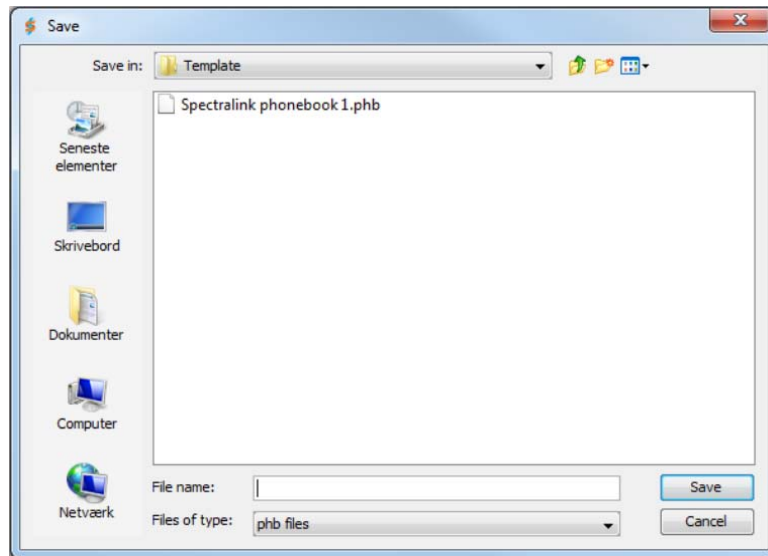
### Copy the Phone Book and Speed Dial list

- 1 Place the handset whose phone book and speed dial list you want to share in the cradle, and then click the **Phone Book** tab.
- 2 Click **Read from handset** to read the names and numbers in the handset.
- 3 Remove the handset from the cradle, and then place another handset in the cradle.
- 4 Click **Write to handset**. The **Phonebook write option** dialog appears.
- 5 Select **Overwrite handset phonebook**, and then click **OK**.

### Save the Phone Book to a File

- 1 Place the handset whose phone book you want to save in the cradle, and then click the **Phone Book** tab.
- 2 Click **Read from handset** to read the names and numbers from the handset.

- 3 In the action panel click **Save phone book to file**. The **Save As** dialog appears.

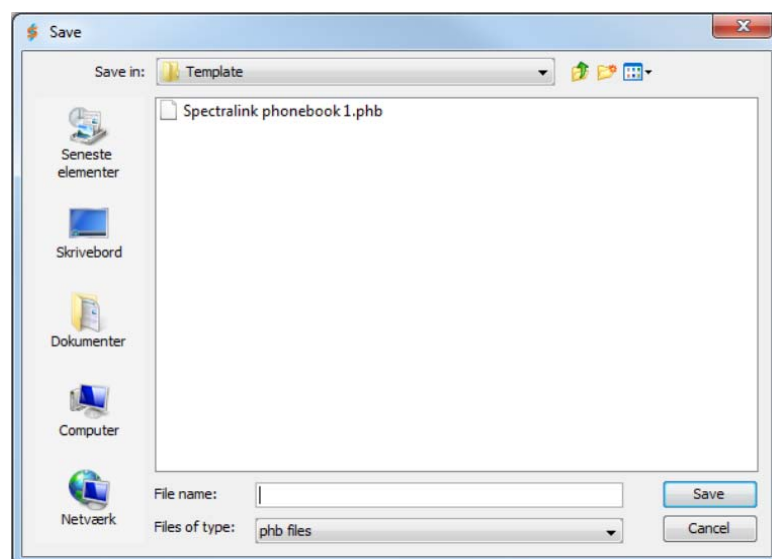


- 4 Locate the folder where you want to save the file, and then click **Save**.

### Open a Phone Book from a File

You can load phone book data into a handset from a file.

- 1 Click the **Phone Book** tab.
- 2 In the action panel click **Load phone book from file**. The **Open** dialog appears.



- 3 Locate the relevant file, and then click **Open**. The phone book data is only displayed in the tool and not saved in the handset.

#### 4 Click **Write to handset**.



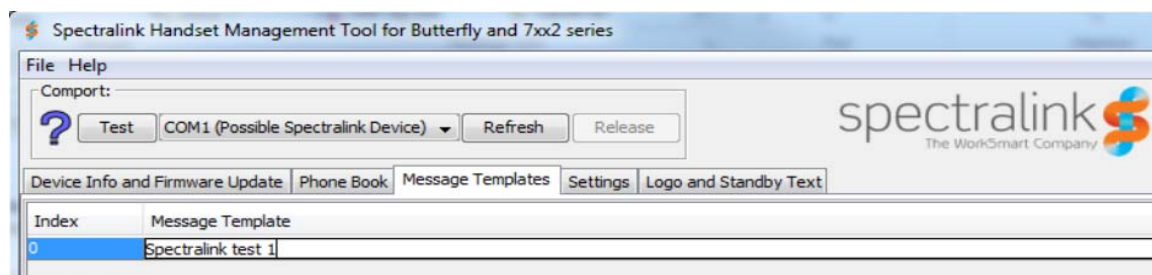
#### 5 Click either **Add contacts to handset phonebook** or **Overwrite handset phonebook**, and then click **OK**.

## Managing Message Templates

Using the Handset Management Tool, you can store, change and delete message templates or copy and share message templates with other handsets. The 75x2, 76x2, 77x2 series can store up to 10 message templates and the 72x2 and Butterfly up to 8 message templates. A maximum of 72 characters for Butterfly and 72x2 series and 180 characters for 75x2, 76x2 and 77x2 Series, including spaces are allowed for each message template.

### Store Message Templates

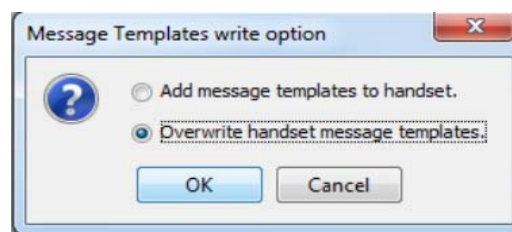
#### 1 Click the **Message Templates** tab.



#### 2 Click **Read from handset** to read the message templates from the handset (if any).

#### 3 Click **Add new template** to enter a new message template.

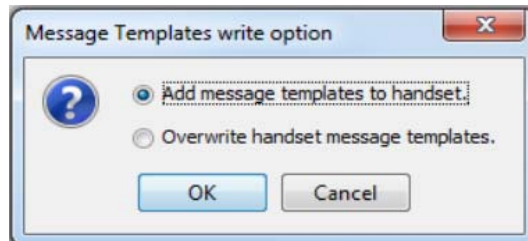
#### 4 Click **Write to handset**. The **Message Templates write option** dialog appears. Click either **Add message template to handset** or **Overwrite handset message templates**.



#### 5 Click **OK** to confirm.

## Change and delete Message Templates

- 1 Click the **Message Templates** tab.
- 2 Click **Read from handset** to read the message templates from the handset (if any).
- 3 Select the message template you want to change or delete and make the appropriate actions.
- 4 Click **Write to handset**. The **Message Templates write option** dialog appears. Click **Overwrite handset message templates**.



- 5 Click **OK** to confirm.

## Delete All Message Templates from a Handset

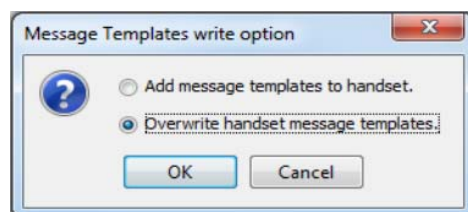
- 1 Delete all entries in the message templates list.
- 2 Click **Write to handset**. Choose **Overwrite handset message templates** in appearing dialog.
- 3 Click **OK** to confirm. All message templates are now deleted in the connected handset.

## Sharing Message Templates with other Handsets

You can copy message templates or save message templates to a file to share them with other handsets.

### Copy Message Templates

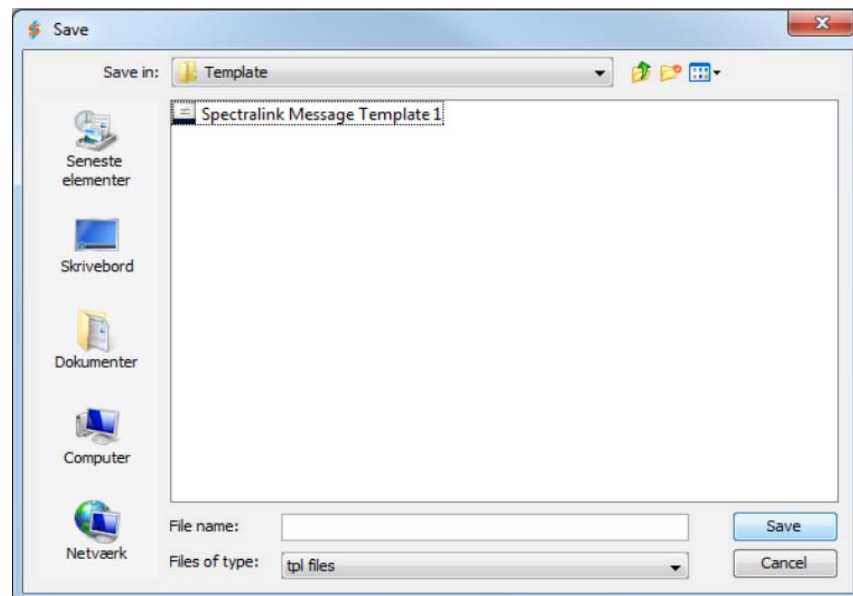
- 1 Place the handset whose message templates you want to share in the cradle, and then click the **Message Templates** tab.
- 2 Click **Read from handset** to read the message templates from the handset.
- 3 Remove the handset from the cradle, and then place another handset in the cradle.
- 4 Click **Write to handset**. The **Message Templates write option** appears.



- 5 Click **Overwrite handset message templates** and click **OK**. The message templates is now copied to the new handset.

### Save Message Templates to a File

- 1 Place the handset whose message template you want to save in the cradle, and then click the **Message Templates** tab.
- 2 Click **Read from handset** to read the templates from the handset.
- 3 In the action panel click **Save templates to file**.The **Save as** dialog appears.



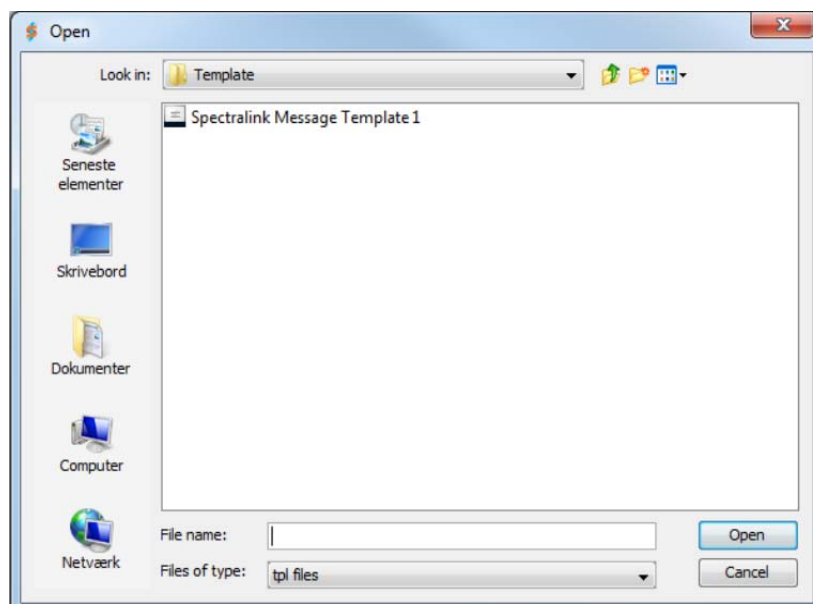
- 4 Locate the folder where you want to save the file, enter a name, and click **Save**.

### Open Message Templates from a File

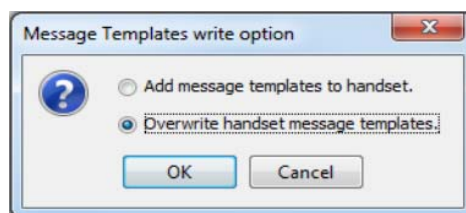
You can load the message templates into a handset from a file.

- 1 Click the **Message Templates** tab.

- 2 In the action panel click **Load templates from file**. The **Open** dialog appears.



- 3 Select the relevant file and click **Open**. The message templates are only displayed in the tool and not saved in the handset.
- 4 Click **Write to handset**. Choose overwrite/replace in appearing dialog.



- 5 Click **OK** to confirm.

## Managing Settings

Using the Handset Management Tool, you can change the settings of the Spectralink Butterfly, 72x2, 75x2, 76x2, and 77x2 series or copy and share settings with other handsets.

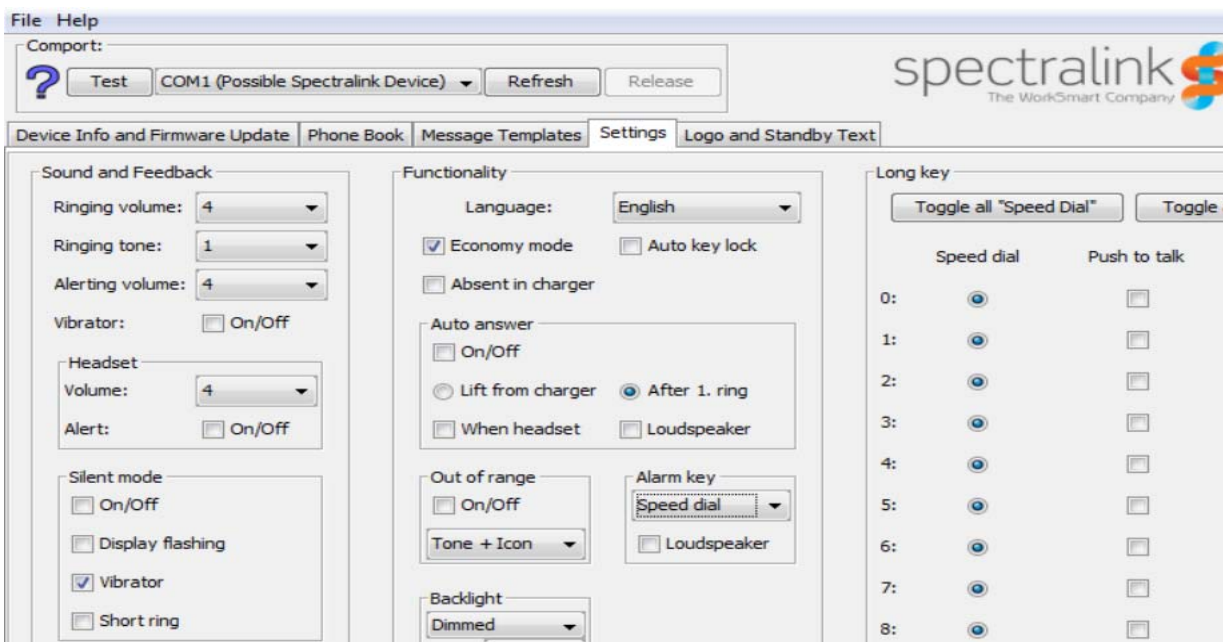
With the settings tab of the Handset Management Tool, you can manage the following settings:

- **Sound and Feedback:** Ringing Volume, Ringing Tone, Alerting Volume, Vibrator On/Off  
Headset: Volume, Alert  
Silent Mode: On/Off, Display Flashing, Vibrator, Short ring
- **Functionality:** Language, Economy mode, Auto key lock, Absent in charger  
Auto answer: On/Off, Lift from charger, After 1. ring, When headset, Loudspeaker  
Out of range: On/Off, Icon only, Tone + Icon  
Alarm Key: Send MSF, Speed dial  
Backlight: Off/Dimmed, Delay
- **Long Key:** Speed Dial, Push to talk, Send MSF.

For more information about the handset settings of the Butterfly, 72x2, 75x2, 76x2, and 77x2 series, refer to the User Guides.

### Change Settings

- 1 Click the **Settings** tab.



- 2 Click **Read from handset** to read the settings from the handset.
- 3 Select the settings you want to change and make the appropriate changes.
- 4 Click **Write to handset**. The changed settings are now stored in the handset.

## Sharing Settings with other Handsets

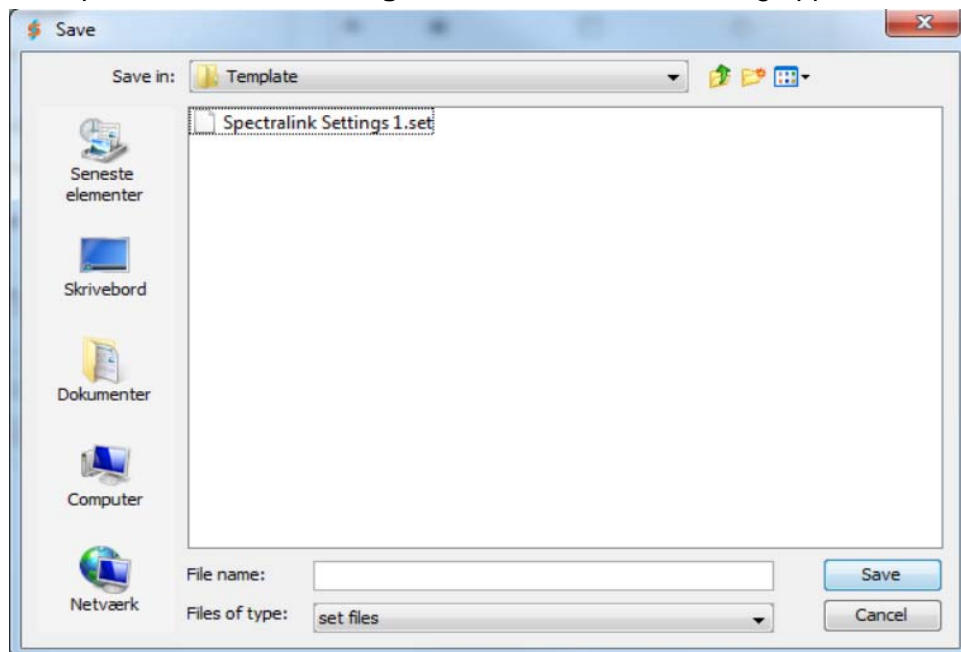
You can copy settings or save settings to a file to share them with other handsets.

### Copy Settings

- 1 Place the handset whose settings you want to copy in the cradle, and then click the **Settings** tab.
- 2 Click **Read from Handset** to read the settings from the handset.
- 3 Remove the handset from the cradle, and then place another handset in the cradle.
- 4 Click **Write to Handset**. The settings are now copied to the new handset.

### Save Settings to a File

- 1 Click **Settings** tab.
- 2 Click **Read from Handset** to read the settings from the handset.
- 3 In the action panel click **Save settings to file**. The **Save as** dialog appears.



- 4 Locate the folder where you want to save the file, enter a name, and then click **Save**.

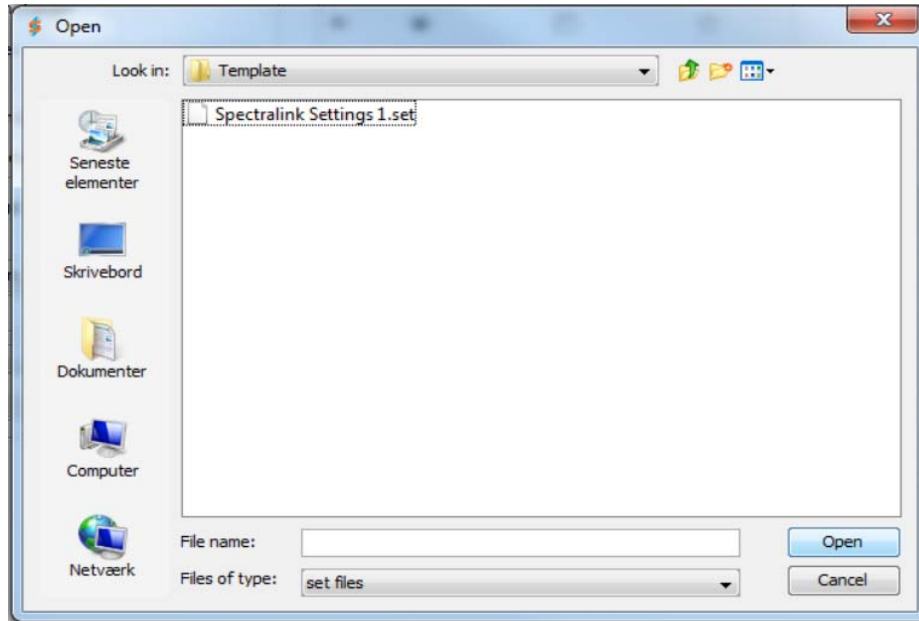
### Load Settings from File

You can load settings into a handset from a file.

- 1 Click the **Settings** tab.



- 2 In the action panel click **Load settings from file**. The **Open** dialog appears.



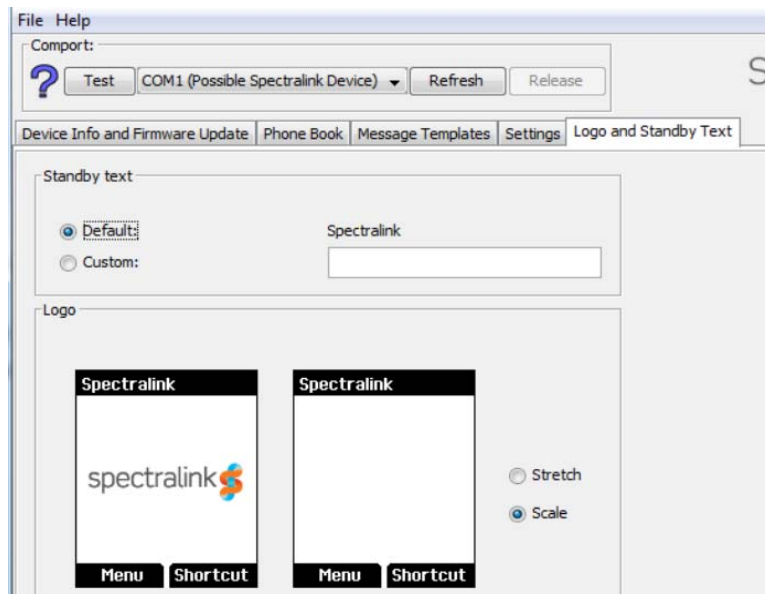
- 3 Select the relevant file and click **Open**.
- 4 Click **Write to Handset**. The settings from the selected file are now copied to the handset.

## Managing Logos and Standby text

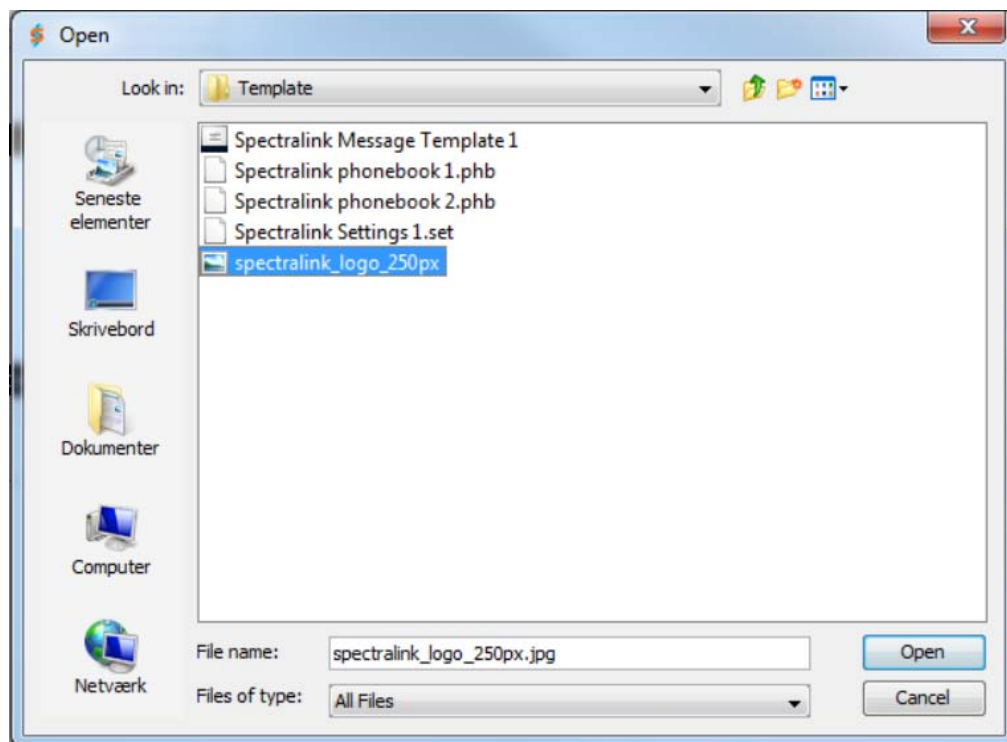
Using the Handset Management Tool, you can copy and share a logo and Standby text with other handsets.

### Load a Logo from a File

- 1 Click the **Logo** tab.



- 2 In the action panel click **Load custom logo from file**. The **Open** dialog appears.



- 3 Select the relevant file and click **Open**. The tool displays the handset home screen with the logo. You can choose if the logo should be scaled or stretched in order to fit the handset home screen logo area.
- 4 In **Standby text** you choose the default text, which is Spectralink, or type in your own standby text that is shown when the handset is idle.
- 5 Click **Write to handset**.
- 6 Click **OK** to confirm.

## Chapter 3: Troubleshooting

This section provides you with general troubleshooting information about management problems and error messages that may occur when working with the Spectralink Handset Management tool.

### *General troubleshooting information*

If an error occurs, and the error description message is not sufficient for solving the problem, try the following:

- 1** Verify that the handset is powered on\* and correctly placed in the USB cradle, and connected to the computer via the USB cable.
- 2** Click on the “Test” button in the comport panel, to make sure the USB charger is working, and can be accessed with the current system permissions, and that the handset can be detected.
- 3** Make sure the newest driver for the USB charger is installed on the system. Drivers can be downloaded from: <http://www.ftdichip.com/Drivers/VCP.htm>.
- 4** Make sure that the tool have proper system permissions, and is allowed to read from and write to comports and files/folders.
- 5** Disconnect the USB cable, turn the handset off and on again, and then reconnect the USB cable.
- 6** Close the tool, Reboot your PC, and start the tool again.

\* During firmware update the handset is not required to be powered on.

©2014 Spectralink Corporation. All rights reserved.

Specifications subject to change without notice.

Spectralink Corporation  
2560 55th Street  
Boulder CO 80301, USA

Spectralink Europe ApS  
Langmarksvej 34  
DK-8700 Horsens  
Tel. +45 7560 2850

[infodk@spectralink.com](mailto:infodk@spectralink.com)  
[www.spectralink.com](http://www.spectralink.com)