

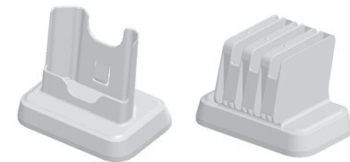
Important Warnings

WARNING: DO NOT...
DO NOT IMMERSERSE THE BATTERY PACK IN WATER OR THROW IT INTO A FIRE.

WARNING: DO NOT...
ALL BATTERIES CAN CAUSE PROPERTY DAMAGE AND/OR BODILY INJURY, SUCH AS BURNS, IF A CONDUCTIVE MATERIAL SUCH AS JEWELRY, KEYS, OR BEADED CHAINS TOUCHES EXPOSED TERMINALS. THE CONDUCTIVE MATERIAL MAY COMPLETE AN ELECTRICAL CIRCUIT (SHORT CIRCUIT) AND BECOME QUITE HOT. EXERCISE CARE IN HANDLING ANY CHARGED BATTERY, PARTICULARLY WHEN PLACING IT INSIDE A POCKET, PURSE, OR OTHER CONTAINER WITH METAL OBJECTS.

Chargers and Battery Packs

- The Multi-Charger is designed to charge Spectralink 87-Series Battery Pack model DM367. It contains a lithium ion battery that is subject to certain usage characteristics as detailed below. Be sure to follow battery handling guidelines to ensure safe use and a long battery life.
- Chargers operate in a 50° to 86° F (10° to 30°C) environment. Do not expose them to freezing temperatures or direct sunlight.
 - Do not place anything in the charging bay other than a single Battery Pack as appropriate to avoid bending the contacts. Bent contacts can keep the Battery Pack from charging.
 - Only use genuine Spectralink 87-Series Battery Packs with Spectralink 87-Series Chargers.
 - Never use a non-genuine charging unit as it could damage the Battery Pack.
 - Use only the original plug-in power adapter for the chargers.
 - Contact your service representative for assistance if you have a faulty Battery Pack or a problem with your charger.
 - Any battery that exhibits swelling, cracking or other abnormality should be disposed of promptly and properly.



**Spectralink PIVOT
Multi-Charger**
Single Chargers

Potentially Explosive Atmospheres

Do not take your handset, charger, or battery into any area with a potentially explosive atmosphere. Do not remove, install, or charge batteries in such areas. Sparks in a potentially explosive atmosphere can cause an explosion or fire resulting in bodily injury or even death.

NOTE: TYPES OF EXPLOSIVE ATMOSPHERES

AREAS WITH POTENTIALLY EXPLOSIVE ATMOSPHERES INCLUDE FUELING AREAS SUCH AS BELOW DECKS ON BOATS, FUEL OR CHEMICAL TRANSFER OR STORAGE FACILITIES, AREAS WHERE THE AIR CONTAINS CHEMICAL OR PARTICLES SUCH AS GRAIN, DUST, OR METAL POWDERS, AND ANY OTHER AREA WHERE YOU WOULD NORMALLY BE ADVISED TO TURN OFF YOUR VEHICLE ENGINE, AREAS WITH POTENTIALLY EXPLOSIVE ATMOSPHERES ARE OFTEN POSTED, BUT NOT ALWAYS.

Facilities

To avoid electromagnetic interference and/or compatibility conflicts, turn off your handset in any area where posted notices instruct you to do so. Hospitals or health care facilities may be using equipment in certain areas that is sensitive to external RF energy.

NOTE: ELECTROMAGNETIC INTERFERENCE

NEARLY EVERY ELECTRONIC DEVICE IS SUSCEPTIBLE TO ELECTROMAGNETIC INTERFERENCE (EMI) IF INADEQUATELY SHIELDED, DESIGNED, OR OTHERWISE CONFIGURED FOR ELECTROMAGNETIC COMPATIBILITY.

Electromagnetic Interference and Compatibility

WARNING: THERE IS A RISK OF EXPLOSION IF YOU REPLACE THE BATTERY PACK WITH AN INCORRECT TYPE. ONLY USE SPECTRALINK MODEL DM367 BATTERY PACKS WITH SPECTRALINK 87-SERIES WIRELESS HANDSETS. DISPOSE OF USED BATTERIES ACCORDING TO THE INSTRUCTIONS.

WARNING: EXPLOSION RISK

WARNING: THE BATTERY USED IN THIS DEVICE MAY PRESENT A RISK OF FIRE OR CHEMICAL BURN IF MISTREATED. DO NOT DISASSEMBLE, HEAT ABOVE 45°C, OR INCINERATE. USE THIS CHARGER TO CHARGE SPECTRALINK BATTERY PACK MODEL DM367 ONLY. CHARGING ANOTHER MODEL BATTERY PRESENTS A RISK OF FIRE OR EXPLOSION.

WARNING: DO NOT...

WARNING: DO NOT...
DO NOT DISPOSE OF THE BATTERY PACK WITH YOUR DOMESTIC WASTE. TAKE USED BATTERY PACKS TO AN APPROPRIATE COLLECTION POINT FOR RECYCLING OR SEND THEM BACK TO YOUR SUPPLIER OR SERVICING AGENT.

Contact Information

Spectralink Corporation

US Location
+1 800-775-5330

Spectralink Corporation
2560 55th Street
Boulder, CO 80301
USA

info@spectralink.com

Denmark Location
+45 7560 2850

Spectralink Europe ApS
Bygholm Soepark 21 E Stuen
8700 Horsens
Denmark

infoemea@spectralink.com

UK Location
+44 (0) 20 3284 1536

Spectralink Europe UK
329 Bracknell, Doncastle Road
Bracknell, Berkshire, RG12 8PE
United Kingdom

infoemea@spectralink.com

Copyright Notice

© 2016 Spectralink Corporation. All rights reserved under Inter-national and pan-American Copyright Conventions. Spectralink™, the Spectralink logo and the names and marks associated with Spectralink's products are trademarks and/or service marks of Spectralink Corporation and are common law marks in the United States and various other countries. All other trademarks are property of their respective owners. Do not remove (or allow any third party to remove) any Product identification, copyright or other notices. No part of the contents of this document may be copied, reproduced, or transmitted in any form or by any means, or translated into another language or format, in whole or part, without the express written consent of Spectralink Corporation.

Introduction to PIVOT Multi-Charger

The Multi-Charger is designed to charge the slimline battery pack (DM367) for PIVOT:S (8742) and Pivot:SC (8744) models.

It has three major modules:

- Desktop Charger
- Battery Charger
- Charging Base

The Desktop Charger and Battery Charger can be used as stand-alone modules or they can be placed in the Charging Base in several different configurations.

See the *Spectralink PIVOT Charging Base Quick Start Guide* for configuration options.

LED Behavior

The LED beside the charging slot indicates the charging status of the Battery Pack. The following table lists the LED indications and Battery Pack status.

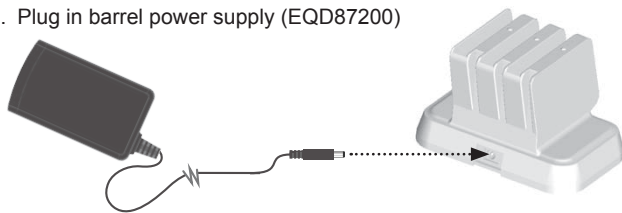
A discharged Battery Pack will take approximately 3 hours to fully charge.

LED Indication	Battery Pack Status
Solid red	Charging
Solid green	Fully charged
Off	Indicates an empty slot or an error condition

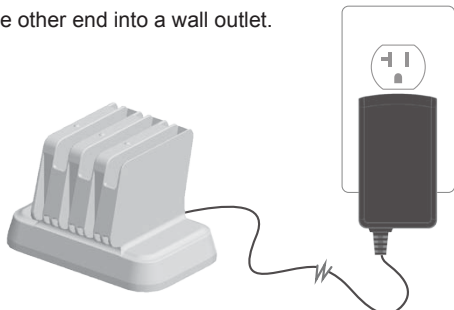
CAUTION: OVERHEATED BATTERY PACKS
IF AN OVERHEATED BATTERY PACK IS DETECTED CHARGING WILL SUSPEND AND THE LED WILL NOT TURN ON. REMOVE THE BATTERY PACK AND LET IT COOL BEFORE ATTEMPTING TO CHARGE IT AGAIN.

Assembling Battery Charger

1. Place the Battery Charger on a flat surface within reach of power. Ensure the power supply has the correct plug for your area.
2. Plug in barrel power supply (EQD87200)



3. Plug the other end into a wall outlet.



4. Look at the contacts on the slimline battery pack(s) (DM367) and note the contacts in the charger. Insert 1, 2 or 3 batteries, ensuring to align contacts. The battery will snap into place. When properly seated, the LED will turn on.

Assembling Desktop Charger

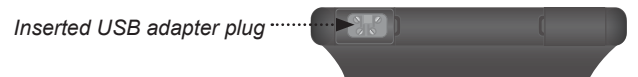
CAUTION:
PHONES MUST BE EQUIPPED WITH THE USB ADAPTOR PLUG IN ORDER TO SUCCESSFULLY CHARGE. A USB ADAPTOR PLUG IS INCLUDED WITH EVERY DESKTOP CHARGER.

1. Locate the USB port on the bottom of the PIVOT:S or PIVOT:SC phone.



2. Remove the USB port cover by pulling it off.

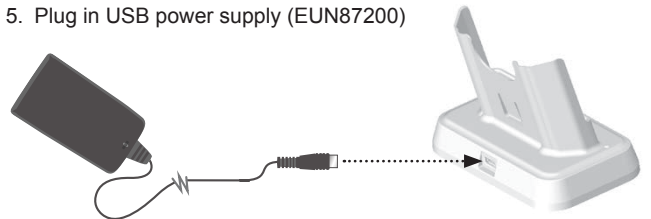
3. Insert the USB adaptor plug.



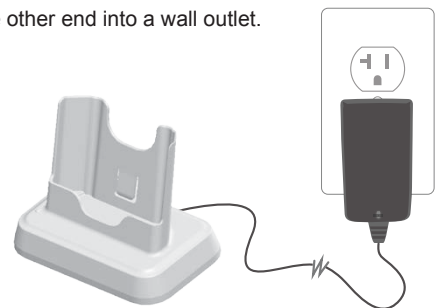
NOTE:
If you need to use the USB port to transfer files to/from a computer, simply plug the USB connection between the computer and the Desktop Charger. The computer will recognize the phone.
Ensure the phone is fully charged when using the Desktop Charger for data transfer via USB.

4. Place the Desktop Charger on a flat surface within reach of power. Ensure the USB power supply has the correct plug for your area.

5. Plug in USB power supply (EUN87200)



6. Plug the other end into a wall outlet.



7. Place a PIVOT:S (8742) or Pivot:SC (8744) into the cradle and observe LED behavior.

CAUTION: DESKTOP PHONE CHARGING
DO NOT POWER OFF THE PHONE BEFORE CHARGING IT IN THE DESKTOP CHARGER.
USE THE SPECTRALINK-SUPPLIED POWER ADAPTER WITH THE DESKTOP CHARGER.
SPECTRALINK DOES NOT RECOMMEND CHARGING VIA A USB CABLE.