

Technical Bulletin CS-18-06

# Spectralink PIVOT & Versity USB Driver V2.0.0

This technical bulletin explains the changes to the Spectralink PIVOT and Versity product USB Drivers, now version 2.0.0.

## *System Affected*

Spectralink PIVOT – all models

Spectralink Versity – all models

## *Description*

The table below lists USB functions supported by Versity and Pivot where the new Spectralink USB Driver v2.0.0 is needed. In most cases the new driver is not needed with Windows 10 because the stock drivers built into the OS will suffice. The driver is needed in most cases with Windows 7. USB functions are commonly combined (like ADB<sup>1</sup> and MTP<sup>2</sup>) using one physical interface through a composite driver. ADB can be used by customers to perform initial installation of applications or application debugging from Android Studio. ADB may also be used by Spectralink support to gather logs via ADB logcat. Fastboot function can be used to unbrick a device by flashing raw images onto the device and is not expected to be used by customers. ADB sideload is not expected to be used by customers except in emergency situation as directed by your Spectralink Support Team. In most cases, OTA<sup>3</sup> should be used to update software.

---

<sup>1</sup> ADB – Android Debug Bridge

<sup>2</sup> MTP – Media Transfer Protocol

<sup>3</sup> OTA – Over-the-Air

Mode	Windows 10	Windows 7
<b>Without ADB</b>		
Charge This Device		
Transfer Files (MTP)		
Transfer Photos (PTP)		
Use Device as MIDI - PIVOT		
<b>With ADB</b>		
Enable USB debugging (adb) + Charge		Y
ADB + MTP		Y
ADB + PTP		Y
ADB + MIDI - PIVOT		Y
Recovery (sideload) w/ LTE Tethering + ADB - PIVOT		Y
Fastboot - PIVOT	Y	Y
Diag Mode + Above - PIVOT		Y

- Y = Driver 2.0.0 is required to support adb and fastboot functions. Otherwise functions work without driver.
- "+" means plus or in addition to.
- "-" means minus or not supported.
- Pivot does not support MIDI, tethering or fastboot functions.
- Versity non-LTE device does not support tether function.
- Pivot charging mode "charge this device" USB function does not enumerate and shows "Unknown" in device manager.
- Pivot does not use Qualcomm diag functions.

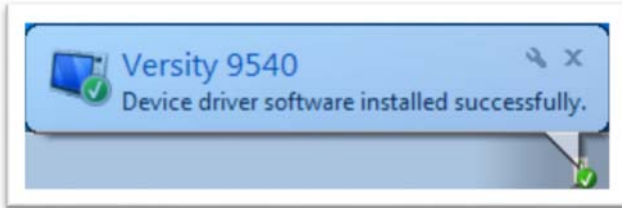
The driver was tested with Windows 7 and 10, 32-bit and 64-bit.

To install, unzip driver zip file and run MSI executable. Driver is signed with a Spectralink certificate. New v2.0.0 driver works with Versity and Pivot. Old USB driver v1.0.0 only worked with Pivot. USB driver v2.0.0 should work on other Windows OSes however it was not tested. Qualcomm QXDM debugging driver is not included in v2.0.0 including serial port and Qualcomm specific RNDIS. Next version will support if needed.

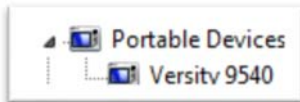
## USB Function Screenshots.

Windows 7

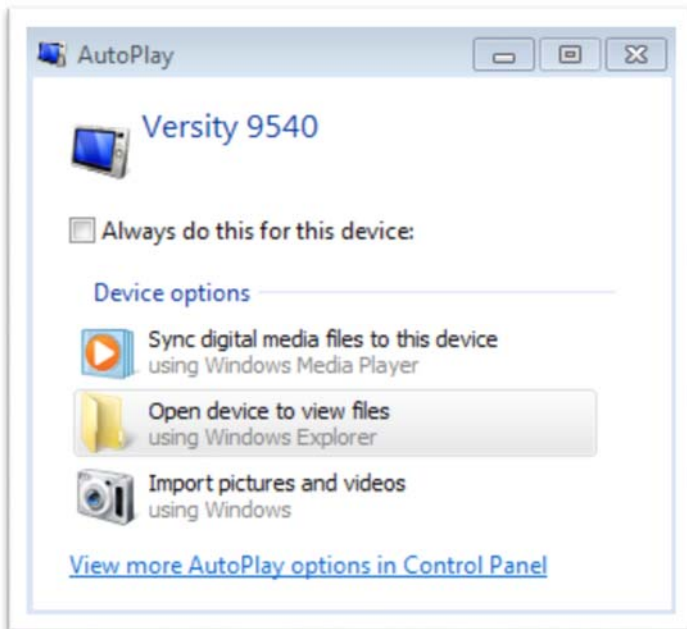
Charging, MTP and PTP functions with USB debugging (ADB) disabled show the following output:

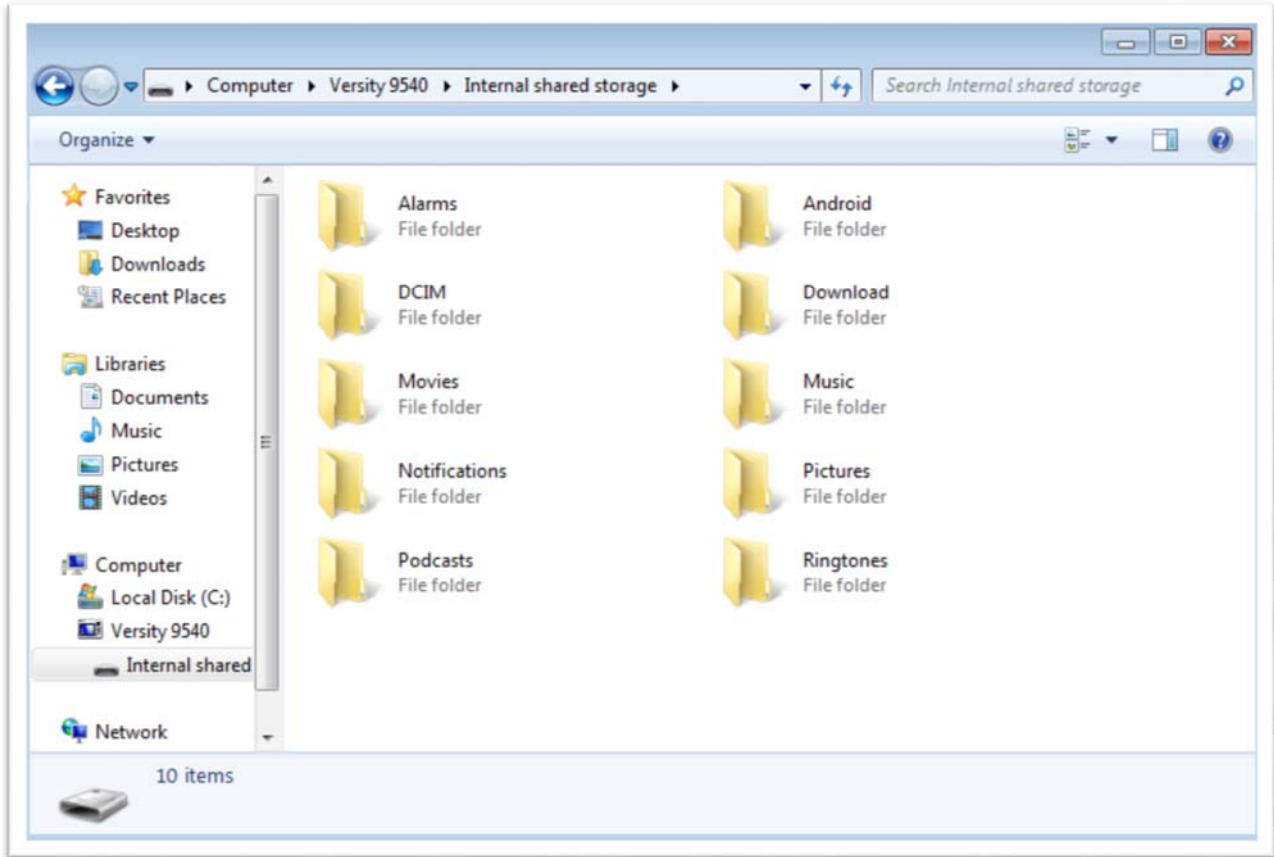


And in Device Manager:

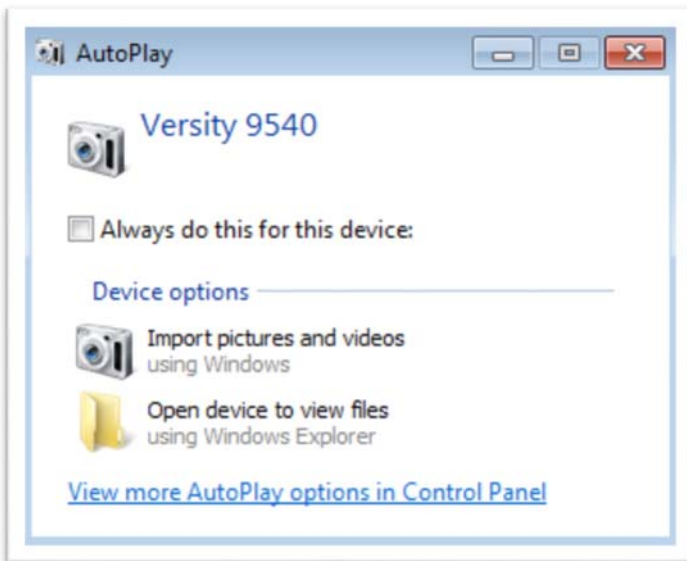


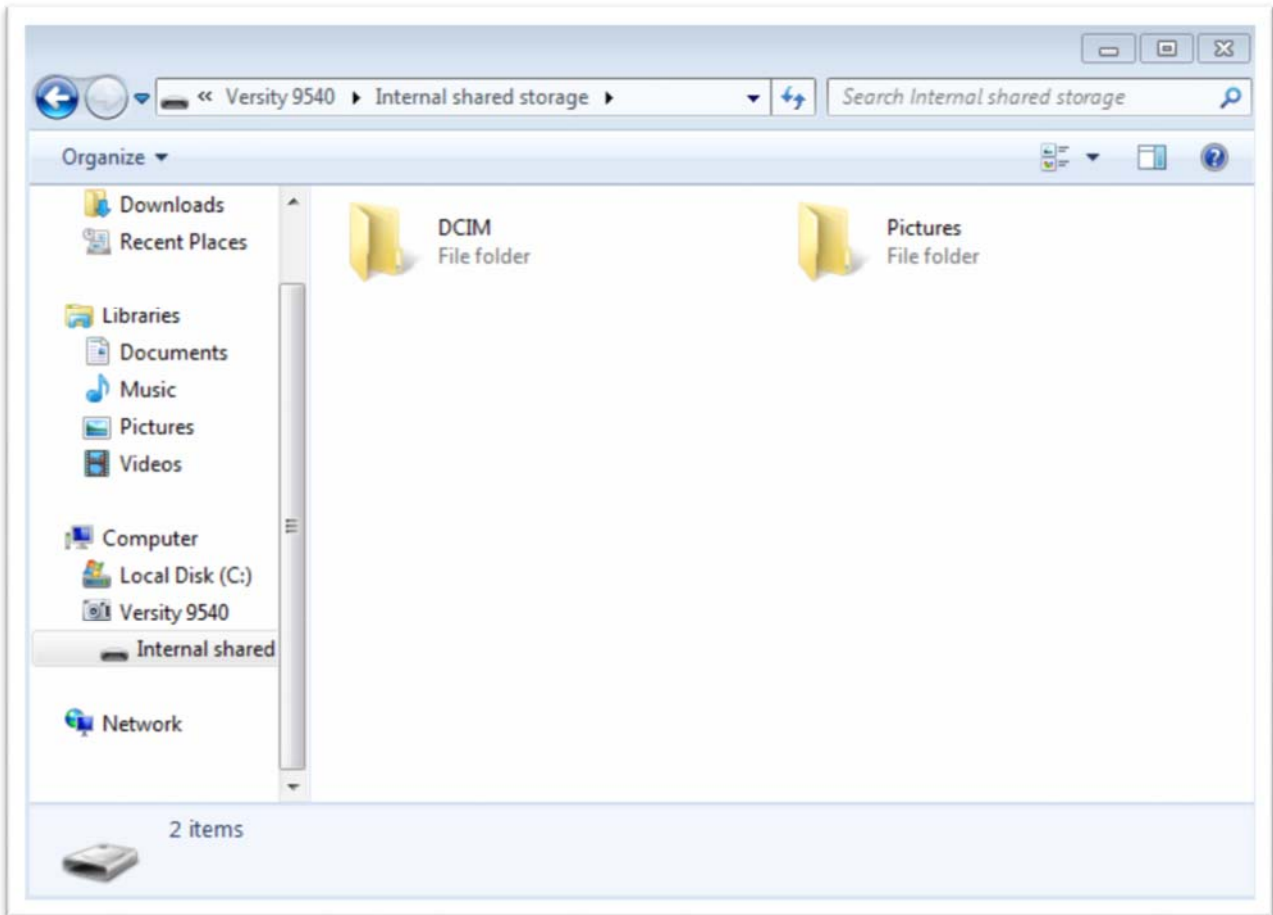
You can browse to files on the device using MTP function:



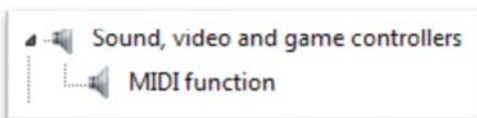


PTP function also provides photo file browsing:

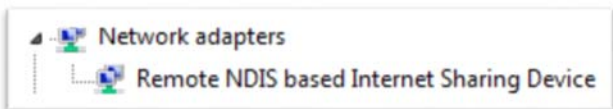




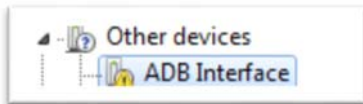
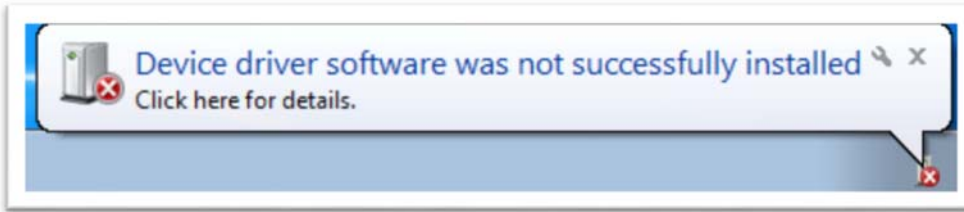
MIDI function shows the following output in Device Manager:



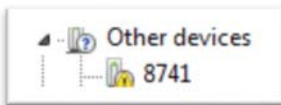
USB tethering will show this output in Device Manager:



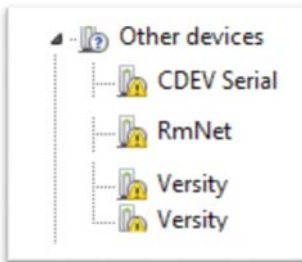
When USB debugging (ADB mode) is enabled on the phone, the following error message without the driver installed.



Pivot 8700 shows:

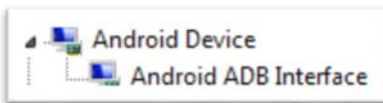


Qualcomm diagnostic functions show the following output in Device Manager:



After installing the new Driver:

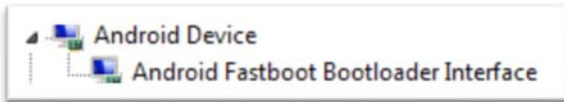
USB debugging (ADB) and recovery function on Versity or Pivot:



ADB with MTP, PTP or MIDI functions:

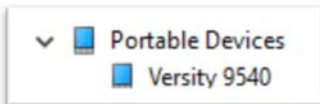


Fastboot function:

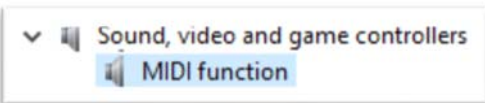


Windows 10:

Charging, MTP and PTP functions with or without USB debugging (ADB) and with or without the new driver show the following output in Device Manager:



And MIDI:



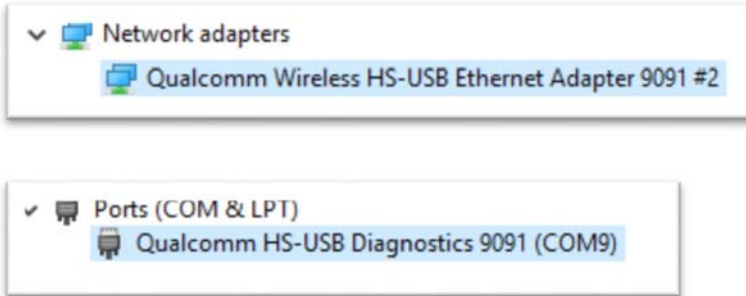
And USB tethering:



Recovery mode shows:

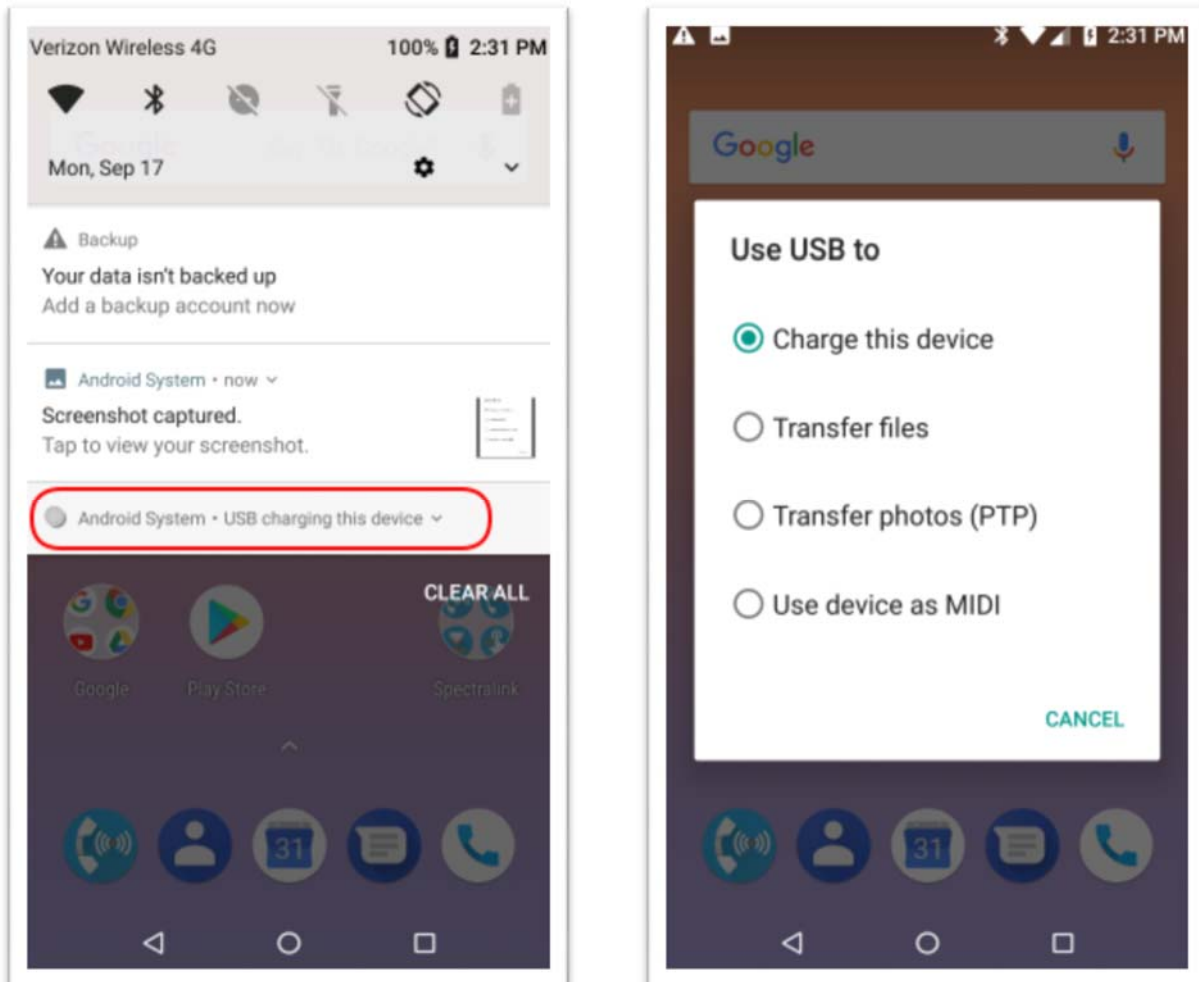


Qualcomm diagnostic functions show the following output in Device Manager:



## *How to select USB functions above.*

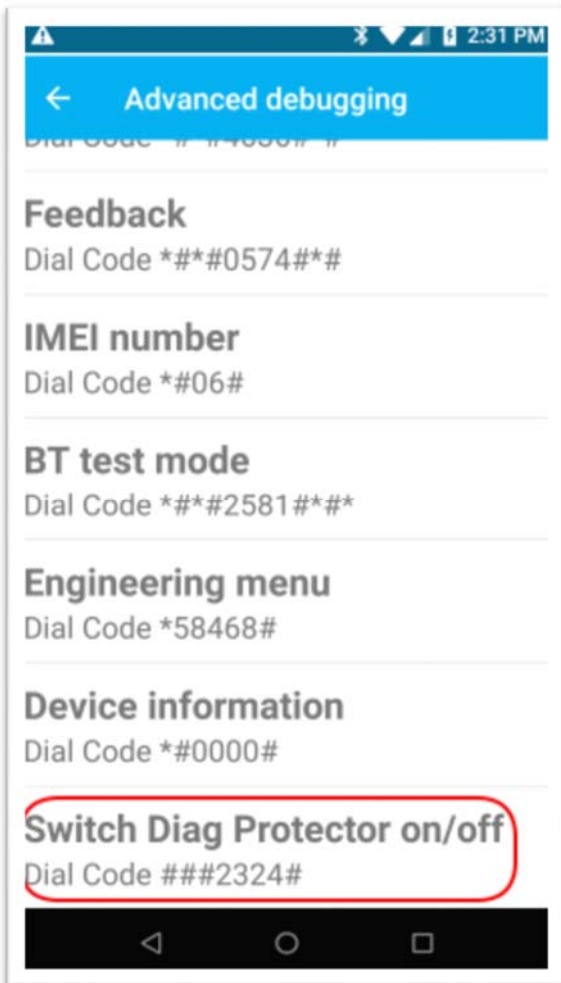
On Versity, pull down notification area at the top of the screen:





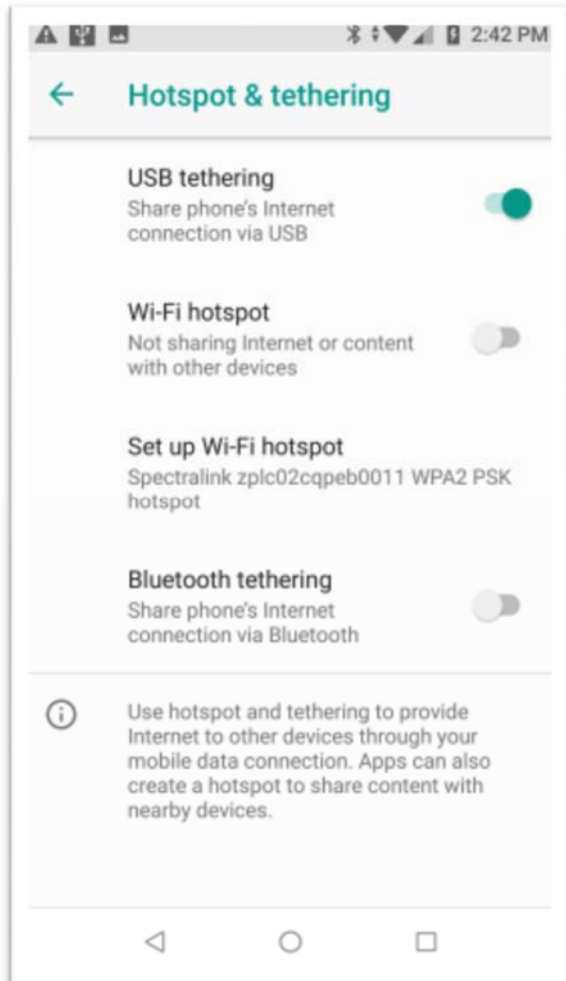
**Diag mode:**

Logging app > "admin" password



## Tethering:

Settings > Network & Internet > Hotspot & tethering



## Fastboot:

ADB reboot bootloader or keep holding volume down then press power

## Recovery:

ADB reboot recovery or keep holding volume down then press power then scroll using volume to Recovery and select using power

# Document Status Sheet

**Document Control Number:** CS-18-06

**Document Title:** CS-18-06 Spectralink PIVOT & Versity USB Driver V2.0.0

**Revision History:** I01 – Released *October 10, 2018*  
I02 – Released  
I03 – Released

**Date:** 10-10-2018

**Status:**  Draft  Issued  Closed

**Distribution Status:**  Author Only  Internal  Partner  Public

## Copyright Notice

© 2018 Spectralink Corporation All rights reserved. Spectralink™, the Spectralink logo and the names and marks associated with Spectralink's products are trademarks and/or service marks of Spectralink Corporation and are common law marks in the United States and various other countries. All other trademarks are property of their respective owners. No portion hereof may be reproduced or transmitted in any form or by any means, for any purpose other than the recipient's personal use, without the express written permission of Spectralink.

All rights reserved under the International and pan-American Copyright Conventions. No part of this manual, or the software described herein, may be reproduced or transmitted in any form or by any means, or translated into another language or format, in whole or in part, without the express written permission of Spectralink Corporation.

Do not remove (or allow any third party to remove) any product identification, copyright or other notices.

## Notice

Spectralink Corporation has prepared this document for use by Spectralink personnel and customers. The drawings and specifications contained herein are the property of Spectralink and shall be neither reproduced in whole or in part without the prior written approval of Spectralink, nor be implied to grant any license to make, use, or sell equipment manufactured in accordance herewith.

Spectralink reserves the right to make changes in specifications and other information contained in this document without prior notice, and the reader should in all cases consult Spectralink to determine whether any such changes have been made.

NO REPRESENTATION OR OTHER AFFIRMATION OF FACT CONTAINED IN THIS DOCUMENT INCLUDING BUT NOT LIMITED TO STATEMENTS REGARDING CAPACITY, RESPONSE-TIME PERFORMANCE, SUITABILITY FOR USE, OR PERFORMANCE OF PRODUCTS DESCRIBED HEREIN SHALL BE DEEMED TO BE A WARRANTY BY SPECTRALINK FOR ANY PURPOSE, OR GIVE RISE TO ANY LIABILITY OF SPECTRALINK WHATSOEVER.

## Warranty

The *Product Warranty and Software License and Warranty* and other support documents are available at <http://support.spectralink.com>.

## Contact Information

### US Location

+1 800-775-5330

Spectralink Corporation  
2560 55th Street  
Boulder, CO 80301  
USA

[info@spectralink.com](mailto:info@spectralink.com)

### Denmark Location

+45 7560 2850

Spectralink Europe ApS  
Bygholm Soepark 21 E Stuen  
8700 Horsens  
Denmark

[infoemea@spectralink.com](mailto:infoemea@spectralink.com)

### UK Location

+44 (0) 20 3284 1536

Spectralink Europe UK  
329 Bracknell, Doncastle Road  
Bracknell, Berkshire, RG12 8PE  
United Kingdom

[infoemea@spectralink.com](mailto:infoemea@spectralink.com)