



Spectralink 84-Series Log Modules & Troubleshooting

Table of Contents

Introduction	5
How to Begin Additional Data Collection for Specific Issues	6
Logging Parameter Definitions List	7
The Way Logging Works.....	12
Disk Space Requirements.....	13
Logging Module Entry Detail List	14
Definitions.....	14
Web Access UI Menu	16
Web Syslog Menu	17
Web Settings → Logging → Global Settings	18
Web Settings → Logging → Log File Upload	19
Web Settings → Logging → Module Log Level Limits.....	20
802.11a/b/g Channel 2.4GHz & 5GHz Frequency Table	22
Troubleshooting.....	23
Recommended Logging for Log and Syslog Data Collection.....	23
Engineering Suggested Log Levels for 8400 APP Logs Data Collection.....	24
Start with these values for all problem investigations:	24
Then add these for the indicated problem type:.....	25
SIP Packet or Call Setup/Tear Down Issues.....	25
Message Push or Browser Issues	25
Configuration problems:.....	25
One-way audio problems:.....	25
Lync dial plan problems	25
Problems with sounds playing on the phone	26
Lync (Skype for Business) certificate issues	26
Wireless connection issues (WPA2, et cetera)	26
Important Log Data to Locate	26
Model, Serial Number & SW Version.....	26



SSID, AP MAC and Channel Frequency used by the Handset	26
WLAN AP Channel List.....	27
Calls Have been Placed to	27
Module Detail Data by Log Level	28
App Communication (log.level.change.acom)	28
Application [log.level.change.app1].....	28
ARES (log.level.change.ares)	33
Background Dialog (log.level.change.bdiag).....	33
Barcode (log.level.change.barcd)	33
Bluetooth (log.level.change.bluet)	34
Bluetooth Driver (log.level.change.drvt)	34
Browser (log.level.change.brow)	34
Buffer (log.level.change.dbuf)	35
Button Style (log.level.change.style)	35
Call list (log.level.change.clist)	35
Call Media Playback (log.level.change.cmp).....	36
CDP (log.level.change.cdp)	36
Certificate (log.level.change.cert).....	36
C-Link (log.level.change.clink).....	36
Configuration (log.level.change.cfg)	36
Copy utilities (log.level.change.copy)	54
CURL (log.level.change.curl)	56
Daisy Chaining (log.level.change.peer)	59
Database (log.level.change.dbs)	60
DHCP Client (log.level.change.dhpc).....	63
DNS (log.level.change.dns)	64
Dot1x (log.level.change.dot1x)	68
EFK (log.level.change.efk)	68
Ethernet Filter (log.level.change.ethf)	68
Exchange Client (log.level.change.ec).....	69
Headset (log.level.change.hset).....	69
HTTP Auth (log.level.change.httpa)	69

HTTP Server (log.level.change.httspd)	70
HTTP TA (log.level.change.ht)	70
HW Desc (log.level.change.hw)	70
HW Signal (log.level.change.sig)	71
Idle Browser (log.level.change.ib).....	71
Key Observer (log.level.change.key).....	71
LDAP (log.level.change.ldap)	72
License (log.level.change.lic).....	73
Logging (log.level.change.log).....	73
Media Recorder (log.level.change.cmr).....	73
Micro Browser (log.level.change.mb).....	74
Network (log.level.change.net).....	74
Niche (log.level.change.niche).....	74
OAI Protocol (log.level.change.oaip)	74
OCSP (log.level.change.ocsp).....	75
On Screen Display (log.level.change.osd)	75
PDC (log.level.change.pdc)	75
PMT (log.level.change.pmt)	76
Pnet (log.level.change.pnetm).....	76
Poll (log.level.change.poll)	76
Power Saving (log.level.change.pwrsv).....	76
PPS (log.level.change.pps)	77
Presence (log.level.change.pres)	77
Presentation (log.level.change.pgui)	78
PTT (log.level.change.ptt)	79
Push (log.level.change.push)	79
RAM Disk (log.level.change.rdisk).....	80
Resource Finder (log.level.change.res).....	80
Real-Time Locating System (log.level.change.rtls)	81
Real-Time Operating System (log.level.change.rtos).....	81
Scheduled (log.level.change.slog).....	81
Security (log.level.change.sec).....	81

Session Initiation Protocol (log.level.change.sip) 82

Secure real-time transport protocol (log.level.change.srtp) 82

Secure SHell Client (log.level.change.sshc) 82

SSPS (log.level.change.ssps)..... 83

Support Objects (log.level.change.so) 83

Syslog (log.level.change.sys) 83

TA (log.level.change.ta) 83

TLS (log.level.change.tls)..... 84

USB (log.level.change.usb)..... 84

USB Dock (log.level.change.dock) 84

USB I/O (log.level.change.usbio)..... 84

Util Task (log.level.change.task)..... 84

Util-Main (log.level.change.utilm) 85

Util-Trace (log.level.change.trace) 85

Video Display (log.level.change.dis)..... 85

Video Frame (log.level.change.cap)..... 85

Wapp Mgr (log.level.change.wmgr) 86

Watch-dog (log.level.change.wdog) 86

WiFi Manager (log.level.change.wifi) 86

WLAN (log.level.change.wlan) 86

eXtensible Messaging and Presence Protocol (log.level.change.xmpp)..... 87

Introduction

Configuration, usage and maintenance of the Spectralink 8400 series wireless telephone involves many tasks. Among these tasks are creating and building configuration files to load over the USB cable (initial provisioning), and other configuration files to load over the WLAN when powered up (central provisioning). Once the 8400 wireless telephones are operational on the WLAN and in use, maintaining the wireless telephones, configuration files and investigation of reported issues are involved.

Reported issues and subsequent investigations often lead to the WLAN to discover how well it supports the wireless telephone, or to areas which do not properly support the wireless telephone.

Log file analysis is of particular interest to the 8400 telecommunications maintenance technician and network support engineer. Often, log data and syslog data from the 8400 telephone is the only operating data from the perspective of the wireless telephone itself.

Log files include mac-app.log, mac-now-app.log, mac-boot.log, mac-now-boot.log and syslog files. All log files, along with configuration files for a particular phone, can be invaluable for feedback and discovery of the 8400 wireless telephone power-up sequence, historical status, error messages and operation. Mac-now-app.log and mac-now-boot.log files are created, and saved to the provisioning server when the 8400 keys 1, 5 & 9 are pressed simultaneously and held for about three seconds (until the phone beeps).

The intent of this manual is to document:

- The module logging categories
 - The terms 'logging modules' and 'logging categories' are synonymous
 - Module is the official term while category may describe it better
 - Each module is a software sub-system component
- What each module does or applies to
- What each log level does
- Which level should be used for troubleshooting a particular issue
- How to select the proper module and level when working a problem
- How to select the proper Global Log Level Limit (Render Level)
- Identify the steps to use when troubleshooting a problem, collect data & isolate the issue

There are three ways to check or set certain parameters on the phone. They are:

- Web based access using a browser with the IP address of the 8400 phone
 - Settings > Logging > Global Settings
 - The above means with a browser connection use the Settings menu, then choose Logging, then choose Global Settings
- 8400 Keypad based access
 - Settings > Status > Platform > Phone
 - The above means use the keypad carousel to select Settings, then select Status, then select Platform, then select Phone
- Configuration files

- log.render.level="1" is used in a configuration file loaded to the phone during power-up provisioning. This sets the Global Log Level limit to 1.

How to Begin Additional Data Collection for Specific Issues

To begin the process of choosing which modules to set for additional logging detail the problem must be described with some detail. Is the problem related to an 8400 bluetooth headset or does poor audio occur when roaming between APs? Is a certain parameter not being set on the 8400 phone or are there no log files being saved to the provisioning server?

Each of these issues and many others can be successfully investigated, identified and resolved using log files from the 8400 phone. Of course, other data may be useful too. The configuration files loaded to the 8400, the provisioning server protocol log, general symptom descriptions from users and other data sources and times of the failure may be useful for troubleshooting a particular issue or failure.

The log file analysis script '8400mac-appmac-bootanalysisv14.exe' may be useful once log files are available.

For the issue of no log files being saved to the provisioning server, a web connection from a PC will enable log files to be downloaded to that PC for analysis, even when the 8400 phone cannot connect to or write log files to its provisioning server. There is a way to collect additional log information. With a web browser connection do the following: Diagnostics Menu → View & Download Logs → Select App log, select Log Level Filter of All, click Export, click Save to save the app.log file on the PC. Then select Boot log, select Log Level Filter of All, click Export, click Save to save the boot.log on the PC. These files, will be limited in size to available memory in the handset, but can be analyzed or sent to 8400 support teams for analysis. When log files are saved to the provisioning server they are prepended with the MAC address of the phone [00907a0e1234-app.log & 00907a0e1234-boot.log].

With a general symptom description, it can be as simple ☺ as scanning through the section called: Logging Module Topics Detail List, to identify the modules to set the log.level for more detail [Event 1 versus Minor Error – 1 versus 4]. Or do a computer search for a variety of search strings to determine which modules and levels are related to a particular issue. It can help to do a visual scan to learn text strings to search for. This can help identify all modules and levels pertaining to a particular issue.

For accuracy and to prevent errors in data collection, it is useful to restrict the number of modules set to 1 for detailed logging to five or six and have all other modules set to default levels (4 or higher). It may be possible to effect logging capability, in a negative way, if too many logging modules are set to detailed [Event 1] level or lower [Debug].

Logging Parameter Definitions List

Web Module Name	Config file parameter name	Description & Comment
Settings > Logging > Global Settings		Web Browser Location
Global Log Level Limit	log.render.level	The render log level determines the lowest severity log level that can be logged for any sub-system component. Render level of 1 allows any log.level.change component to log as low as level 1. Default is Event 1.
Type	log.render.type	This specifies how the time stamp displays in log messages. Options include several formats that use the following: Y-Year, M-Month, D-Day, M/m-minutes, S-seconds and ms-milliseconds. Default is MDHms.
Log to Standard Output	log.render.stdout	The 8400 phone does not have a console to have its logs printed to standard out. Default is Enabled but can be disabled on 8400 phones unless a special phone is used with console cable attached.
Log to File	log.render.file	When enabled, the phone will write logs to its flash (internal) file system. The phone will upload the logs when a specified time period has elapsed or the phone's memory is full. Disabling will stop the phone from uploading all logs to its provisioning server. Default is Enable.
Log File Size (Kbytes)	log.render.file.size	This determines the maximum size (in KB) of the internal log buffer maintained by the phone. When the maximum size is reached, the log file is written to the provisioning server. Default is 32 KBytes.
Settings > Logging > Log File Upload		Web Browser Location
Upload Period (s)	log.render.file.upload.period	This determines how often log files are written to the provisioning server. Default is 86400 seconds (24 hours)
Append When Uploading	log.render.file.upload.append	This determines if log files are appended when uploaded to the provisioning server. When enabled, log files are appended. When

		disabled, log files are not appended. Default is Enabled.
Upload Append Size Limit (Kbytes)	log.render.file.upload.append.sizeLimit	This determines the maximum size log files on the provisioning server. When the limit is reached, log files are either deleted (while logging continues with a new file) or logging stops. Default is 512KB.
Upload Append Limit Mode	Log.render.file.upload.append.limitMode	This controls how the provisioning server handles log files that have reached their maximum size limit. Select Delete to delete old log files and start over to save new data. Select Stop to stop downloading log file data from the phone when maximum size is reached. Default is Delete.
Settings > Logging > Module Logging Level Limits		Web Browser Location
App Communication	log.level.change.acom="4"	APPLication Communications. Default is Minor Error = 4
Application	log.level.change.app1="4"	Application logging. Default is Minor Error = 4
ARES	log.level.change.ares="4"	ARES logging. Default is Minor Error = 4
Background Dialog	log.level.change.bdiag="4"	Background Dialog logging. Default is Minor Error = 4
Barcode	log.level.change.barcd="4"	Barcode logging. Default is Minor Error = 4
Bluetooth	log.level.change.bluet="4"	Bluetooth logging. Default is Minor Error = 4
Bluetooth Driver	log.level.change.drvt="4"	Bluetooth Driver logging. Default is Minor Error = 4
Browser	log.level.change.brow="4"	Browser logging. Default is Minor Error = 4
Buffer	log.level.change.dbuf="4"	Buffer logging. Default is Minor Error = 4
Button Style	log.level.change.style="4"	Button Style logging. Default is Minor Error = 4
Call list	log.level.change.clist="4"	Call List logging. Default is Minor Error = 4
Call Media Playback	log.level.change.cmp="4"	Call Media Playback logging. Default is Minor Error = 4
CDP	log.level.change.cdp="4"	CDP logging. Default is Minor Error = 4
Certificate	log.level.change.cert="4"	Certificate logging. Default is Minor Error = 4
C-Link	log.level.change.clink="4"	C-Link logging.

		Default is Minor Error = 4
Configuration	log.level.change.cfg="1"	Configuration logging. Default is Event 1 = 1
Copy utilities	log.level.change.copy="4"	Copy Utilities logging. Default is Minor Error = 4
CURL	log.level.change.curl="4"	CURL logging. [transfer a URL programming] Default is Minor Error = 4
Daisy Chaining	log.level.change.peer="4"	Daisy Chain logging. Used for daisy chained VVX phones. Default is Minor Error = 4
Database	log.level.change.dbs="4"	Database logging. Default is Minor Error = 4
DHCP Client	log.level.change.dhcpc="4"	DHCP Client logging. Default is Minor Error = 4
DNS	log.level.change.dns="4"	DNS logging. Default is Minor Error = 4
Dot1x	log.level.change.dot1x="4"	Dot1x logging. Default is Minor Error = 4
EFK	log.level.change.efk="4"	EFK [Extended Feature Keys] logging. Default is Minor Error = 4
Ethernet Filter	log.level.change.ethf="4"	Ethernet Filter logging. Default is Minor Error = 4
Exchange Client	log.level.change.ec="4"	Exchange Client logging. Default is Minor Error = 4
Headset	log.level.change.hset="4"	Headset logging. Default is Minor Error = 4
HTTP Auth	log.level.change.httpa="4"	HTTP Authorization logging Default is Minor Error = 4
HTTP Server	log.level.change.httpd="4"	HTTP Server logging. Default is Minor Error = 4
HTTP TA	log.level.change.ht="4"	HTTP TA logging. Default is Minor Error = 4
HW Desc	log.level.change.hw="4"	HTTP Description language logging. Default is Minor Error = 4
HW Signal	log.level.change.sig="4"	HW Signal logging. Default is Minor Error = 4
Idle Browser	log.level.change.ib="4"	Idle Browser logging. Default is Minor Error = 4
Key Observer	log.level.change.key="4"	Key Observer logging. Default is Minor Error = 4
LDAP	log.level.change.ldap="4"	LDAP [Lightweight Directory Access Protocol] logging. Default is Minor Error = 4
License	log.level.change.lic="4"	License logging. Default is Minor Error = 4
Logging	log.level.change.log="4"	Logging logging.

		Default is Minor Error = 4
Media Recorder	log.level.change.cmr="4"	Media recorder logging. Default is Minor Error = 4
Micro Browser	log.level.change.mb="4"	Micro Browser logging. Default is Minor Error = 4
Network	log.level.change.net="1"	Network logging. Default is Event 1 = 1
Niche	log.level.change.niche="4"	Niche logging. Default is Minor Error = 4
OAI Protocol	log.level.change.oaip="4"	OAI [Open Application Interface] logging. Default is Minor Error = 4
OCSP	log.level.change.ocsp="4"	OCSP [Online Certificate Status Protocol] logging. Default is Minor Error = 4
On Screen Display	log.level.change.osd="4"	On Screen Display logging. Default is Minor Error = 4
PDC	log.level.change.pdc="4"	PDC logging. Default is Minor Error = 4
PMT	log.level.change.pmt="4"	PMT logging. Default is Minor Error = 4
Pnet	log.level.change.pnetm="4"	Pnet logging. Default is Minor Error = 4
Poll	log.level.change.poll="4"	Poll logging. Default is Minor Error = 4
Power Saving	log.level.change.pwrsv="1"	Power Save logging. Default is Event 1 = 1
PPS	log.level.change.pps="4"	PPS logging. Default is Minor Error = 4
Presence	log.level.change.pres="4"	Presence logging. Default is Minor Error = 4
Presentation	log.level.change.pgui="4"	Presentation logging. Default is Minor Error = 4
PTT	log.level.change.ptt="4"	PTT [Push To Talk] logging. Default is Minor Error = 4
Push	log.level.change.push="4"	Push logging. Default is Minor Error = 4
RAM Disk	log.level.change.rdisk="4"	RAM Disk logging. Default is Minor Error = 4
Resource Finder	log.level.change.res="4"	Resource Finder logging. Default is Minor Error = 4
RTLS	log.level.change.rtls="4"	Real-Time Locating System logging. Default is Minor Error = 4
RTOS	log.level.change.rtos="4"	Real-Time Operating System logging. Default is Minor Error = 4
Scheduled	log.level.change.slog="4"	Scheduled logging. Default is Minor Error = 4

Security	log.level.change.sec="4"	Security logging. Default is Minor Error = 4
SIP	log.level.change.sip="4"	Session Initiation Protocol Communications logging. Default is Minor Error = 4
Srtp	log.level.change.srtp="4"	Secure real-time transport protocol logging. Default is Minor Error = 4
SSH Client	log.level.change.sshc="4"	SSH [Secure Shell] Client logging. Default is Minor Error = 4
SSPS	log.level.change.ssp="4"	SSPS logging. Default is Minor Error = 4
Support Objects	log.level.change.so="4"	Support Objects logging. Default is Minor Error = 4
Syslog	log.level.change.sys="4"	Syslog logging. Default is Minor Error = 4
TA	log.level.change.ta="4"	TA logging. Default is Minor Error = 4
TLS	log.level.change.tls="4"	TLS [Transport Layer Security] logging. Default is Minor Error = 4
USB	log.level.change.usb="4"	USB logging. Default is Minor Error = 4
USB Dock	log.level.change.dock="4"	USB Dock logging. Default is Minor Error = 4
USB I/O	log.level.change.usbio="4"	USB I/O logging. Default is Minor Error = 4
Util Task	log.level.change.task="4"	Util Task logging. Default is Minor Error = 4
Util-Main	log.level.change.utilm="4"	Util-Main logging. Default is Minor Error = 4
Util-Trace	log.level.change.trace="4"	Util-Trace logging. Default is Minor Error = 4
Video Display	log.level.change.dis="4"	Video Display logging. Default is Minor Error = 4
Video Frame	log.level.change.cap="4"	Video Frame logging. Default is Minor Error = 4
Wapp Mgr	log.level.change.wmgr="4"	Wapp logging. Default is Minor Error = 4
Watch-dog	log.level.change.wdog="4"	Watch-dog logging. Default is Minor Error = 4
WiFi Manager	log.level.change.wifi="1"	WiFi Manager logging. Default is Event 1 = 1
WLAN	log.level.change.wlan="1"	WLAN logging. Includes: AStat, AThresh, NStat, NThresh, Successful Handoff, Failed Handoff, AP RSSI, Retry rates, Missed & Dropped rates, etc.

		Default is Event 1 = 1
XMPP	log.level.change.xmpp="4"	XMPP [Extensible Messaging and Presence Protocol] logging. Default is Minor Error = 4
Settings > Logging > Syslog		Web Browser Location
Server Address	device.syslog.serverName	The syslog server IP address or host name if DNS is used
Server Type	device.syslog.transport	The protocol used by the phone to write to the syslog server. If set to None, transmission is turned off but the IP address is maintained. Default is UDP.
Facility	device.syslog.facility	This provides a description of what generated the log message. Default is 16, which maps to local 0.
Render Level	device.syslog.renderLevel	This specifies the lowest class of event that will be sent (rendered) to the syslog server. It is based on log.render.level and can be a lower value. Default is Minor Error.
Prepend MAC	device.syslog.prependMac	This determines if the phone MAC address is prepended to the log message sent to the syslog server. Default is Enabled.

Log.level.change web based option names include, with corresponding configuration file parameter numbers:

- Debug = 0
- Event 1 = 1
- Event 2 = 2
- Event 3 = 3
- Minor Error = 4
- Major Error = 5
- Fatal Error = 6

The Way Logging Works

With default level parameters set on a working 8400 wireless telephone, log file (mac-app.log and mac-boot.log) generation occurs as follows:

- log.render.level="1"
- log.render.type="2" [MDHms]
- log.render.stdout="0"
- log.render.file="1"

- log.render.file.size="32"
- log.render.file.upload.period="86400"
- log.render.file.upload.append="1"
- log.render.file.upload.append.sizeLimit="512"
- Log.render.file.upload.append.limitMode="delete"

Logging will occur into internal buffers until the internal buffers are at or near the 32KB mark (to trigger a default size related update) or 86,400 seconds have elapsed (to trigger a default time related update), then the appropriate mac-boot.log or mac-app.log data is written to the provisioning server. These files increment in approximate 32KB chunks (file size of 32KB then 64KB then 96KB, etc.) until the file on the provisioning server reaches or gets near 512KB. Then the file is deleted and the next log file update writes a new file starting with 32KB of log data.

No syslog data is logged, since with default levels and no additional parameters set, the phone does not know the IP address of a syslog server. Therefore, it cannot write syslog data to a syslog server.

Syslog data can contain the same data as log file data with a few new fields pre-pended to the log entry. The following log data (1st bullet item) would show up in a syslog file as (2nd bullet item):

- 003646.061|app1 |*|00|[AppUiMisc]:Battery strength is VERY LOW.
- Oct 12 10:42:41 192.168.2.104 Jan 1 00:37:08 192.168.2.104 00907a0cd719|003646.061|app1 |*|00|[AppUiMisc]:Battery strength is VERY LOW.
 - The fields prepended include: syslog server time stamp, IP address of the 8400 phone, time stamp from the 8400, IP address of 8400, MAC address of 8400 phone

Disk Space Requirements

Disk space requirements can be predicted, on the provisioning server, with the 8400 phone. As an example with the above settings, 200 wireless telephones would write mac-app.log and mac-boot.log files to their provisioning server. Each file could be up to 512KB. This means each phone could have log files which would use 1MB of disk space. So, 200 phones would use 200MB of space for log files.

Configuration files would add to the disk space requirement for the 8400 wireless telephones. Each phone model code file, sip.Id file, is about 50MB. If all three models of sip.Id files remain on the provisioning server, these files consume about 150MB of disk space. Then configuration template files will use a little more space. This brings the total space requirements to about 350MB – 400MB.

If syslog data is collected and sent to the same system, additional space would be required. Or another system could be used to collect syslog data which would avoid any extra space requirements on the central provisioning server.

Syslog data will contain the same or similar data as log files. One advantage of syslog data is the size of the syslog file is not constrained by the above parameters. So, historical data can be collected for a long period of time. And the syslog file does not get deleted at intervals to start over again, as log files will with the above parameters.



Syslog data sent by the 8400 handset is subject to network congestion or other issues which may prevent log data from arriving at the syslog server as expected. Syslog data is sent with Best Effort QoS, so, a busy network or busy WLAN may cause loss of log data at the syslog server file.

It is recommended to define and use a “Log_Files” directory, or another name of your choice, in the provisioning server. This allows log files to be stored and found in a separate directory from configuration files and other files on the provisioning server.

Once the ‘Log_Files’ directory is created off the provisioning server root directory, then the 8400 phones can be told to use this sub-directory in the master configuration file (000000000000.cfg or mac.cfg). The master configuration file will contain a command line similar to the following:

```
<APPLICATION APP_FILE_PATH="sip.ld" CONFIG_FILES="" MISC_FILES="" LOG_FILE_DIRECTORY=""  
OVERRIDES_DIRECTORY="" CONTACTS_DIRECTORY="" LICENSE_DIRECTORY=""></APPLICATION>
```

The individual command: LOG_FILE_DIRECTORY=“\Log_Files” will specify the sub-directory to store the log files into. Depending on the syslog server, this command will not create the sub-directory. It must be created manually before it can be used.

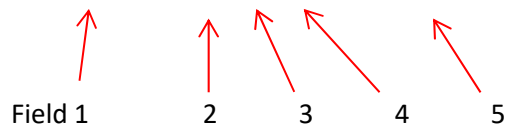
Logging Module Entry Detail List

This section provides detail on various log level entries.

Definitions

A typical log file entry contains several fields to be aware of. A sample entry is:

001041.509|app1|*|00|Manual Restart



Each field is separated by a pipe “|” symbol.

Field definitions are:

- Field 1
 - Time stamp showing up time of the phone when this log entry occurred
 - 001041.509 is up time of: 1,041 seconds. The lowest time in a –boot file is: 000010.519
 - After the phone learns actual local time (from an NTP server) it can display absolute, local time zone or other time formats as in 0103113120 (Jan. 03, 11:31.20).
- Field 2
 - Log Module name
 - There are 80 or so module names (see list below)
- Field 3

- Log entry level:
 - * = Direct entry = log entry which occurs irrespective of the log level set
 - 0 = Debug logging level
 - 1 = Event 1 logging level
 - 2 = Event 2 logging level
 - 3 = Event 3 logging level
 - 4 = Minor Error only logging level
 - 5 = Major Error only logging level
 - 6 = Fatal Error only logging level
- Field 4
 - The number of missing log messages
- Field 5
 - The log entry detailed information

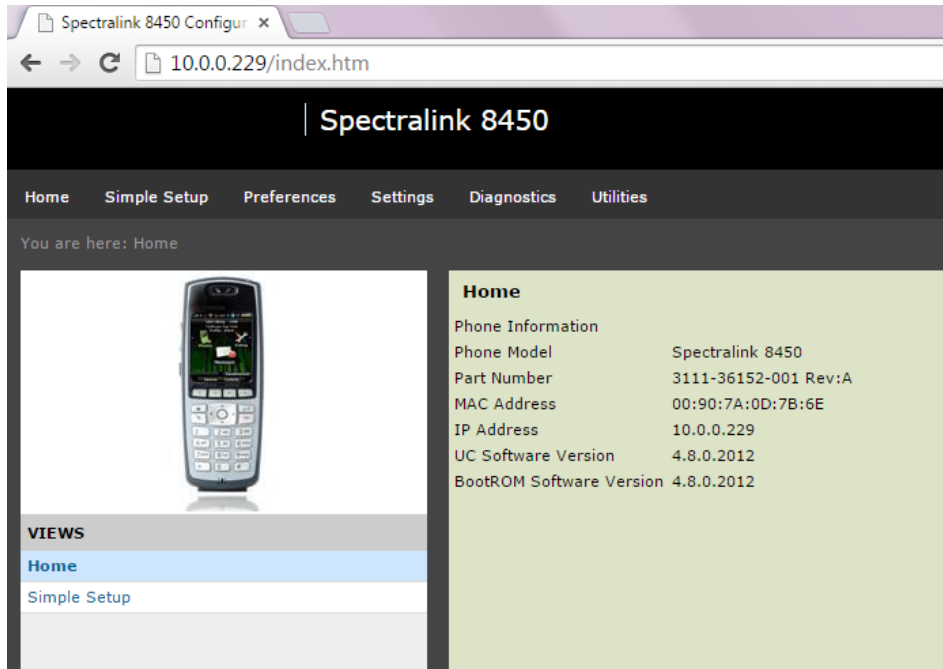
Certain log entries are summarized in this document. For example, the summary entry of [Battery] Status Summary info will represent “Battery” related entries such as:

- 000110.066|app1 |*|00|#### Battery authentication success
- 000110.067|app1 |*|00|[AppUiMisc]:Battery is VERY LOW
- 000024.251|app1 |*|00|[AppUiMisc]:Battery is very low, SHUTDOWN
- 000024.251|app1 |*|00|[AppUiMisc]:handleVeryLowBatteryNotifyAlert: Low Battery Shutdown Notification Started
- 000034.395|app1 |*|00|[AppUiMisc]:handleVeryLowBatteryNotifyAlert: Low Battery Shutdown Notification Ended
- 000034.395|app1 |*|00|[AppUiMisc]:handleVeryLowBatteryNotifyAlert: LowBatteryShutdown
- 000021.620|app1 |4|00|[AppUiMisc]: Battery set standby current failed.
- 0405161827|slog |3|36|##### Running showBatteryStat #####
- 0405161827|slog |3|36|Battery status: 1738 mA-Hr / 1750 mA-Hr (99%), 4021 (4044) mV, -216 mA, -868mW
- 000017.779|slog |1|00|Add log: command 'showBatteryStat'
- Oct 12 10:42:41 192.168.2.104 Jan 1 00:37:08 192.168.2.104 00907a0cd719|003646.061|app1 |*|00|[AppUiMisc]:Battery strength is VERY LOW.
 - This entry is from a syslog file. Notice time stamp, phone IP and MAC address prepended to a typical log file entry

In the following list, log levels set at a certain level [number] will collect log entries at that or higher level numbers. For example: with a log level of 4 [default], for a particular module [log.level.change.wlan="4"], log entries at 4, 5 or 6 will be collected in internal buffers and sent to the provisioning server. Lower level log entries will not be collected such as 3, 2, 1 or 0. Set the log level to the lowest level (most verbose level) desired.

Web Access UI Menu

Use the IP address of the 8400 handset with Google Chrome to connect to the Web UI.

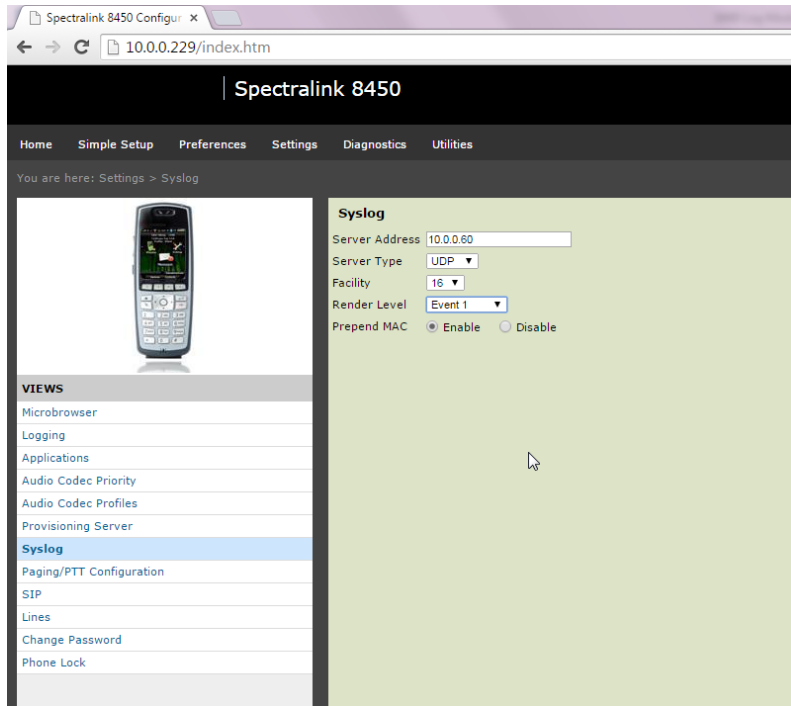


The Home screen of the 8400 phone web interface shows:

- Phone Model
- Part Number and Revision
- MAC Address
- IP Address
- UC Software Version
- BootROM Software Version

Web Syslog Menu

Click Settings > Syslog to access the syslog menu.

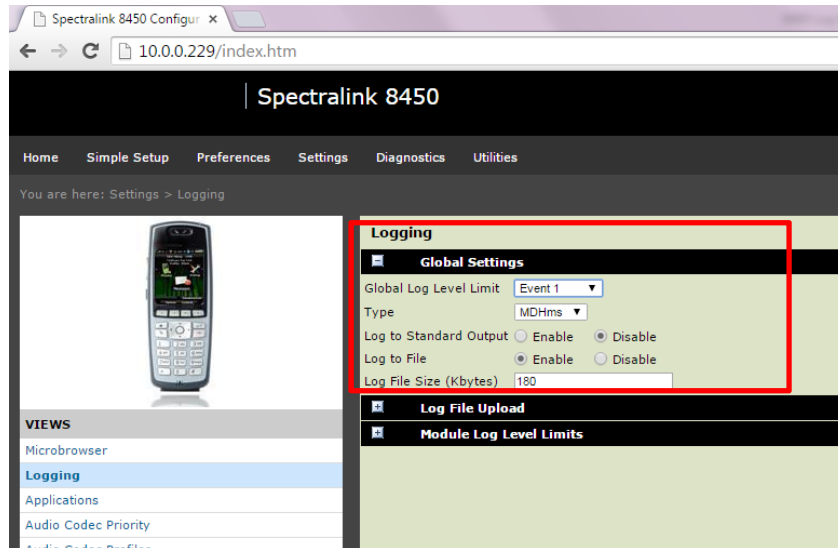


The Syslog Menu screen shows:

- Syslog Server IP address
- Server Type Protocol used
 - UDP is the typical protocol to use for syslog
- Facility
 - The default value of 16 (maps to local 0) provides a description of what generated the syslog message
- Render Level
 - Specifies the lowest level entries which will be logged
 - The individual module level set cannot log entries lower than this master render level
- Prepend MAC
 - Enable allows the phone to prepend the phone MAC address to the syslog entry

Web Settings → Logging → Global Settings

Click Settings > Logging to access the Global Settings



The current Global Settings include:

- Global Log Level Limit: Event 1 (equals log.render.level="1")
 - No individual module log level will be logged lower than this master level
- Type: MDHms
- Log to Standard Output: Disable
 - The 8400 phone does not have a console cable or port
- Log to File: Enable
 - Enable allows the phone to log entries to the provisioning server
- Log File Size (Kbytes): 180
 - When internal log entries reach 32KB the log will be written to the provisioning server

The Global Log Level Limit determines the lowest (most verbose) level which will be logged from any of the sub-system identified in the Module Log Level Limits. The logging level set here determines the lowest severity log level that can be logged for any sub-system component. Event 1 is more verbose than Event 4.

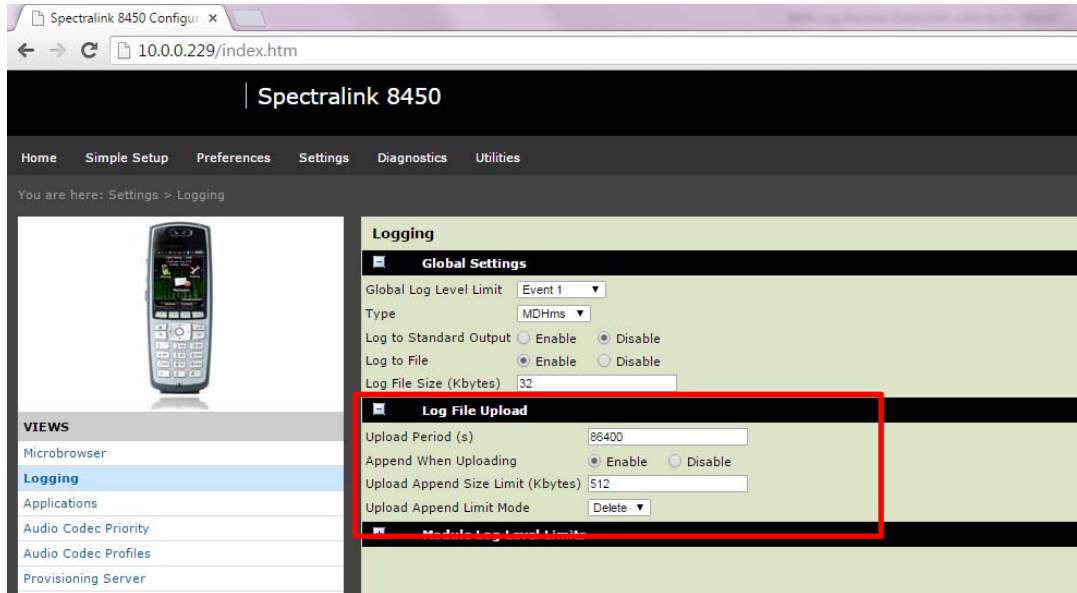
The Type field specifies how the time stamp is formatted in log file entries. MDHms is Month Day Hour milliseconds. Other choices include: YMDHm and HMSms where Y=Year, M=Month, D=Day, H=Hours, M/m=Minutes, S=Seconds, ms=milliseconds. Typically, when the 8400 boots log files show uptime (000014.236 = 14.236 seconds) until the phone is able to identify Year, Month, Day, Hour, Seconds and milliseconds. Then these time stamps are included in the log file.

Log to Standard Output does not apply to the 8400 phone because (without special modifications) the 8400 does not have a console cable or connection.

Log to File = Enable will allow the phone to write to its internal flash file system. Once the file system is full the contents are written to the provisioning server. Disabling this will disable all logging to the internal flash file system and to the provisioning server.

Log File Size (Kbytes) specifies the size of Internal Flash File system (memory) reserved for log data. When this area gets full the data is output to the provisioning server.

Web Settings → Logging → Log File Upload



Current settings are:

- Upload Period (s) is default at 86,400 seconds (which is 24 hours)
- Append When Uploading set to Enable
- Upload Append Size Limit (Kbytes) set to 512 (default)
 - Set to a larger number to collect more log data with a larger file size
- Upload Append Limit Mode set to Delete

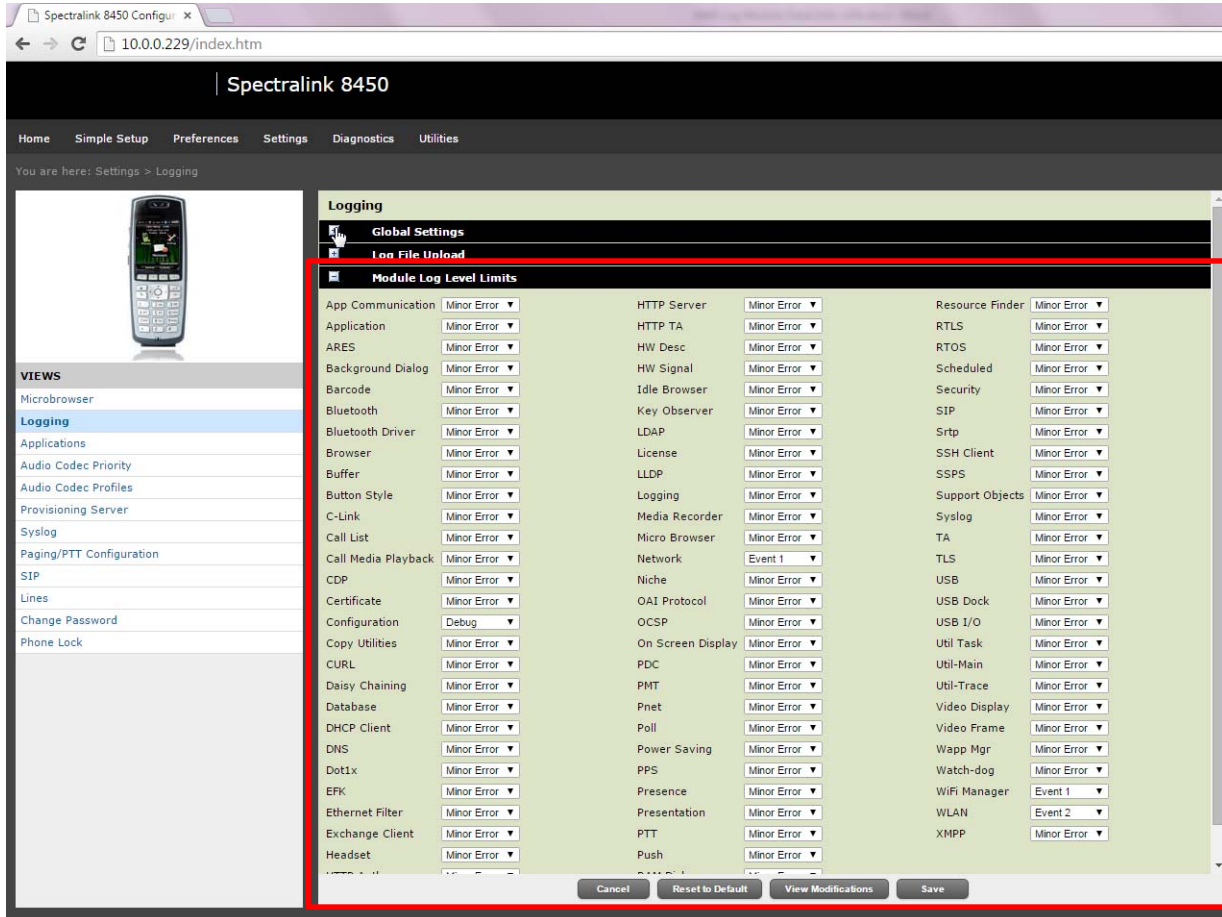
This means the log file on the provisioning server will grow to 512 Kbytes (each update will append to the existing file), then the file is deleted and starts over. Each update to the phone adds 32 Kbytes to the file.

The log data is written to the provisioning server every 24 hours (based on Upload Period parameter).

When troubleshooting, it can be useful to set the Settings > Logging > Log File Upload > Upload Period to 3600 (one hour) or 1800 (30 minutes) or 30 (30 seconds) in order to collect log data more quickly. Set any module log to desired levels (usually Event 1 or 1). Delete the existing mac-app.log and mac-boot.log files (mac-now-app.log and mac-now-boot.log also). Then perform the operation which causes failures. Ensure the log files have been updated (file time stamp) after the operation which fails. Then get copies of the log files to analyze.

If the log files have not been updated when the testing is over, then use the three buttons (1, 5 and 9 simultaneously and beep) to force log files to be written as mac-now-boot.log and mac-now-app.log. After the key press, wait about two minutes for all log data to be written to the log files and be available for collection.

Web Settings → Logging → Module Log Level Limits



The screenshot shows the 'Module Log Level Limits' configuration page in the Spectralink 8450 web interface. The page is titled 'Logging' and contains a table of module log levels. A red box highlights the table area. The table lists various modules and their current log levels, all of which are set to 'Minor Error'. At the bottom of the table, there are buttons for 'Cancel', 'Reset to Default', 'View Modifications', and 'Save'.

Module	Log Level	Module	Log Level	Module	Log Level
App Communication	Minor Error	HTTP Server	Minor Error	Resource Finder	Minor Error
Application	Minor Error	HTTP TA	Minor Error	RTLS	Minor Error
ARES	Minor Error	HW Desc	Minor Error	RTOS	Minor Error
Background Dialog	Minor Error	HW Signal	Minor Error	Scheduled	Minor Error
Barcode	Minor Error	Idle Browser	Minor Error	Security	Minor Error
Bluetooth	Minor Error	Key Observer	Minor Error	SIP	Minor Error
Bluetooth Driver	Minor Error	LDAP	Minor Error	Srtp	Minor Error
Browser	Minor Error	License	Minor Error	SSH Client	Minor Error
Buffer	Minor Error	LLDP	Minor Error	SSPS	Minor Error
Button Style	Minor Error	Logging	Minor Error	Support Objects	Minor Error
C-Link	Minor Error	Media Recorder	Minor Error	Syslog	Minor Error
Call List	Minor Error	Micro Browser	Minor Error	TA	Minor Error
Call Media Playback	Minor Error	Network	Event 1	TLS	Minor Error
CDP	Minor Error	Niche	Minor Error	USB	Minor Error
Certificate	Minor Error	OAI Protocol	Minor Error	USB Dock	Minor Error
Configuration	Debug	OSCP	Minor Error	USB I/O	Minor Error
Copy Utilities	Minor Error	On Screen Display	Minor Error	Util Task	Minor Error
CURL	Minor Error	PDC	Minor Error	Util-Main	Minor Error
Daisy Chaining	Minor Error	PMT	Minor Error	Util-Trace	Minor Error
Database	Minor Error	Pnet	Minor Error	Video Display	Minor Error
DHCP Client	Minor Error	Poll	Minor Error	Video Frame	Minor Error
DNS	Minor Error	Power Saving	Minor Error	Wapp Mgr	Minor Error
DotLx	Minor Error	PPS	Minor Error	Watch-dog	Minor Error
EFK	Minor Error	Presence	Minor Error	WiFi Manager	Event 1
Ethernet Filter	Minor Error	Presentation	Minor Error	WLAN	Event 2
Exchange Client	Minor Error	PTT	Minor Error	XMPD	Minor Error
Headset	Minor Error	Push	Minor Error		

Use the scroll bar on the right to scroll down to see more module log names and their levels.

Spectralink 8450

Home Simple Setup Preferences Settings Diagnostics Utilities

You are here: Settings > Logging

VIEWS

- Microbrowser
- Logging**
- Applications
- Audio Codec Priority
- Audio Codec Profiles
- Provisioning Server
- Syslog
- Paging/PTT Configuration
- SIP
- Lines
- Change Password
- Phone Lock

Global Settings

Log File Upload

Module Log Level Limits

App Communication	Minor Error	HTTP Server	Minor Error	Resource Finder	Minor Error
Application	Minor Error	HTTP TA	Minor Error	RTLS	Minor Error
ARES	Minor Error	HW Desc	Minor Error	RTOS	Minor Error
Background Dialog	Minor Error	HW Signal	Minor Error	Scheduled	Minor Error
Barcode	Minor Error	Idle Browser	Minor Error	Security	Minor Error
Bluetooth	Minor Error	Key Observer	Minor Error	SIP	Minor Error
Bluetooth Driver	Minor Error	LDAP	Minor Error	Srtp	Minor Error
Browser	Minor Error	License	Minor Error	SSH Client	Minor Error
Buffer	Minor Error	LLDP	Minor Error	SSPS	Minor Error
Button Style	Minor Error	Logging	Minor Error	Support Objects	Minor Error
C-Link	Minor Error	Media Recorder	Minor Error	Syslog	Minor Error
Call List	Minor Error	Micro Browser	Minor Error	TA	Minor Error
Call Media Playback	Minor Error	Network	Event 1	TLS	Minor Error
CDP	Minor Error	Niche	Minor Error	USB	Minor Error
Certificate	Minor Error	OAI Protocol	Minor Error	USB Dock	Minor Error
Configuration	Debug	OCSP	Minor Error	USB I/O	Minor Error
Copy Utilities	Minor Error	On Screen Display	Minor Error	Util Task	Minor Error
CURL	Minor Error	PDC	Minor Error	Util-Main	Minor Error
Daisy Chaining	Minor Error	PMT	Minor Error	Util-Trace	Minor Error
Database	Minor Error	Pnet	Minor Error	Video Display	Minor Error
DHCP Client	Minor Error	Poll	Minor Error	Video Frame	Minor Error
DNS	Minor Error	Power Saving	Minor Error	Wapp Mgr	Minor Error
Dot1x	Minor Error	PPS	Minor Error	Watch-dog	Minor Error
EFK	Minor Error	Presence	Minor Error	WiFi Manager	Event 1
Ethernet Filter	Minor Error	Presentation	Minor Error	WLAN	Event 2
Exchange Client	Minor Error	PTT	Minor Error	XMPP	Minor Error
Headset	Minor Error	Push	Minor Error		
HTTP Auth	Minor Error	RAM Disk	Minor Error		

Cancel Reset to Default View Modifications Save

Set or check each individual module log level. The default for most modules is Minor Error, which is 4 in the configuration file with these log.level.change.name entries.

802.11a/b/g Channel 2.4GHz & 5GHz Frequency Table

802.11bg DSSS Channel 2.4GHz Frequency Range			802.11a OFDM Channel 5GHz Frequency Range		
Channel ID	Channel (Center) Frequencies GHz	Channel Frequency Range	Frequency Band 802.11a Sub-band	Channel	GHz
1	2.412	2.401 - 2.423	UNII 1 5.15-5.25GHz	34	5.170
2	2.417	2.406 - 2.428		36	5.180
3	2.422	2.411 - 2.433		40	5.200
4	2.427	2.416 - 2.438		44	5.220
5	2.432	2.421 - 2.443		48	5.240
6	2.437	2.426 - 2.448	UNII 2 (DFS) 5.25-5.35GHz	52	5.260
7	2.442	2.431 - 2.453		56	5.280
8	2.447	2.436 - 2.458		60	5.300
9	2.452	2.441 - 2.463		64	5.320
10	2.457	2.446 - 2.468	UNII 2 Extended (DFS) 5.47-5.725GHz	100	5.500
11	2.462	2.451 - 2.473		104	5.520
12	2.467	2.456 - 2.478		108	5.540
13	2.472	2.461 - 2.483		112	5.560
14	2.484	2.473 - 2.495		116	5.580
				120	5.600
				124	5.620
				128	5.640
			132	5.660	
			136	5.680	
			140	5.700	
			UNII3 5.725-5.825GHz	149	5.745
				153	5.765
				157	5.785
				161	5.805
			ISM Band	165	5.825

The left table, above, identifies the frequencies used by each channel in the 802.11b/g (2.4GHz) range. The spectral bandwidth (channel) is 22MHz wide when 802.11b DSSS is used. The spectral mask (channel) is 20MHz for 802.11a/g OFDM signaling. 802.11b/g channels 1 through 11 are used in the United States.

In the 5GHz range channels 36 through 165 is used in the United States.

DFS is Dynamic Frequency Selection and is used to avoid weather-radar & military radar. These channels (52 – 140) can take the wireless telephone longer to scan to discover any access points in the area. If possible, avoid using these DFS channels. DFS Channel Announcement must be enabled on the WLAN.

SpectralLink 8020/8030 wireless handsets do not use channel 165. This channel should be disabled on the WLAN when 8020/8030 handsets are used. 8400 & 8700 wireless handsets use channel 165.

Troubleshooting

Troubleshooting the 8400 wireless telephone involves problem identification, user feedback, data collection and analysis. Then a change in the area revealed through analysis as most likely to improve the outcome and test again.

When troubleshooting, it can be useful to set the Settings > Logging > Log File Upload > Upload Period to 3600 (one hour) or 1800 (30 minutes) in order to collect log data more quickly. Set any module log to desired levels (usually Event 1 or 1). Delete the existing mac-app.log and mac-boot.log files (mac-now-app.log and mac-now-boot.log also) or simply ensure the log files have been updated. Then perform the operation which causes failures. Ensure the log files have been updated (file time stamp) after the operation which fails. Then get copies of the log files to analyze or send to support for analysis.

If the log files have not been updated when the testing is over, then use the three buttons (1,5 and 9 simultaneously) to force log files (mac-now-app.log and mac-now-boot.log) to be written.

It can be useful to calculate the length of time it takes the phone to increment to reach the maximum size of the log file on the provisioning server. With no calls and no registration to a SIP server a test phone sent logging updates, with all modules set to Event 1, every minute with a 15KB increment in file size. Ensure the maximum file size is not reached and deleted before the test sequence can be run. This will help ensure the best data can be generated and collected. This will ensure good data is collected to analyze or sent in for analysis.

Recommended Logging for Log and Syslog Data Collection

Recommended logging includes getting configured and setup to collect log data and syslog data as needed. Keep log levels for all modules at Minor Error [4], or 6 if less logging is desired, so minimal data is collected. If/when there are issues with the handsets, either specific handsets can be configured for more verbose log levels or all handsets can be configured for more detailed data collection. When investigating an issue investigation it is generally necessary to collect syslog data as well as log data from, at least, a small collection of [test] handsets exhibiting the problem.

- `log.render.level="1"`
- `log.render.type="2"`
- `log.render.stdout="0"`
- `log.render.file="1"`
- `log.render.file.size="32"`
- `log.render.file.upload.period="86400"`
- `log.render.file.upload.append="1"`
- `log.render.file.upload.append.sizeLimit="512"`
- `Log.render.file.upload.append.limitMode="delete"`
- `device.syslog.serverName="102.168.2.110"` <- Update with correct syslog IP address
- `device.syslog.transport="1"`
- `device.syslog.facility="16"`



- device.syslog.renderLevel="1"
- device.syslog.prependMac="1"

Each log.level.change module parameter should be set to 4 until there is a need to collect more detailed log information.

Then specific modules on specific phones can be set to 1 to collect more detail when a problem occurs. This allows detailed log and syslog data to be collected for analysis to identify, understand, isolate and resolve the issues. The following are sample log level to add when troubleshooting:

- log.level.change.cfg="1"
- log.level.change.net="1"
- log.level.change.sip="1"
- log.level.change.wifi="1"
- log.level.change.wlan="1"

It is a good idea to set no more than 5 modules to level 1. Some modules at level one are very verbose logging much detail. It is possible to overload the internal buffer systems, steal cycles away from important functions for normal telephone and roaming operations or cause WLAN busy conditions.

Of course, the actual module set to level 1 will be determined by the specific failures or symptoms of the wireless telephone and a scan thru the various Logging Module Topics Detail descriptions above.

Engineering Suggested Log Levels for 8400 APP Logs Data Collection

This section describes setting log parameter levels for various issues and problems.

From: <http://newwiki/bin/view/Main/SuggestedLogLevelsForDebug>

NOTE: FTP is the only provisioning protocol which allows log files to be appended to and large files collected. TFTP, HTTP & HTTPS will over-write the mac-app.log and mac-boot.log files so they stay small and have little log data.

NOTE: The suggested log levels below assume that all other log levels are set to default values (4).

Start with these values for all problem investigations:

These will get logs big enough and dumped often enough to do some good:

- log.render.level="0"
- log.render.stdout="0"
- log.render.file.size="180"
- log.render.file.upload.period="30"
- log.render.file.upload.append.sizeLimit="65535"
- log.level.change.wlan="2"



Then add these for the indicated problem type:

Minimize the number of log modules set to 0 (debug) as significant amounts of data will be sent to the server. Do not combine all suggestions below with many log modules set to debug (0).

SIP Packet or Call Setup/Tear Down Issues

SIP packet flow issues (phone is deregistered, call doesn't go thru, call is dropped, etc)

- `log.level.change.sip="0"`
- `log.level.change.app1="1"`

NOTE: If the customer has to use syslogging because they don't have a provisioning server and they are using Microsoft Lync, using SIP log level 0 may overwhelm the network with packets and many packets may be lost. The only way we have today to get around this is to produce a debug load that limits the number of lines of a SIP packet that is logged. Starting with version 4.7, there will be a new config item that can be used to change the number of lines logged. More on this later...

Message Push or Browser Issues

Problems with messages pushed to the phone or any browser issues:

- `log.level.change.app1="1"`
- `log.level.change.httpd="0"`
- `log.level.change.push="0"`
- `log.level.change.brow="0"`
- `log.level.change.wmgr="0"`

Configuration problems:

- `log.level.change.cfg="1"`
- `log.level.change.copy="1"`

One-way audio problems:

- `log.level.change.sip="0"`
- `log.level.change.so="1"`

NOTE: This will get the sip packet flow but a simultaneous wireless trace will also be needed.

Lync dial plan problems



(in 4.11.0 and later). The first two (pps and utilm) will show the dial plan processing and the second two (so and sip) will show access to the dial plan while making a call and will show the sip packet produced.

- log.level.change.pps="2"
- log.level.change.utilm="3"
- log.level.change.so="1"
- log.level.change.sip="0"

Problems with sounds playing on the phone

- log.level.change.so="1"

Lync (Skype for Business) certificate issues

- log.level.change.ticket="0"
- log.level.change.tls="0"

Wireless connection issues (WPA2, et cetera)

- log.level.change.dot1x="0"

Important Log Data to Locate

There are certain log data details which are or can be important to locate.

The following provides information on many elements and detailed data to locate:

Model, Serial Number & SW Version

- Jun 26 07:53:06 10.10.128.254 Jan 01 06:08:26 10.10.128.254 SyslogNewtorkStateInfo[3516]: 00907a123922|1420156825370|SyslogNewtorkStateInfo|6|00| Logging to syslog - 8741 serial #641194274 (version:KOT49H 1.5.0.10702 u-boot:2009.08-00779-g72ca4d6)
 - The above shows Spectralink Model 8741, Serial # 641194274, SW Version 1.5.0.10702
 - Also this identifies the 8741 MAC address: 00907a123922 and IP: 10.10.128.254

SSID, AP MAC and Channel Frequency used by the Handset

- Jun 26 07:53:08 10.10.128.254 Jan 01 06:08:27 10.10.128.254 wpa_supplicant[2728]: 00907a123922|1420156866710|wpa_supplicant|6|00| CTRL-EVENT-STATE-CHANGE id=0 state=6 BSSID=00:00:00:00:00:00 SSID=SpectraVoice
 - This identifies the SSID as SpectraVoice
- Jun 26 07:54:51 10.10.128.254 Jan 01 06:10:03 10.10.128.254 wpa_supplicant[2728]: 00907a123922|1420157401820|wpa_supplicant|6|00| Trying to associate with 3c:ce:73:c6:21:8e (SSID='SpectraVoice' freq=5180 MHz)
 - This entry identifies SSID SpectraVoice, Trying to associate, AP MAC 3c:ce:73:c6:21:8e and AP Channel frequency 5180 Mhz
 - 5180 MHz is 802.11a channel 36. Refer to 802.11a/b/g Channel Chart, above
- Jun 26 07:54:51 10.10.128.254 Jan 01 06:10:07 10.10.128.254 wpa_supplicant[2728]: 00907a123922|1420157406920|wpa_supplicant|6|00| CTRL-EVENT-STATE-CHANGE id=0 state=6 BSSID=3c:ce:73:c6:21:8e SSID=SpectraVoice
 - This identifies SSID SpectraVoice and AP MAC 3c:ce:73:c6:21:8e

WLAN AP Channel List

- Jun 26 07:54:51 10.10.128.254 Jan 01 06:10:07 10.10.128.254 wpa_supplicant[2728]: 00907a123922|1420157407020|wpa_supplicant|6|00| Successful Handoff to 3cce.73c6.218e(Channel:36 Score:428 RSSI:-72 dBm Penalty:0) from 3cce.736d.c8ae(Channel:161 Score:455 RSSI:-45 dBm Penalty:0), Reason 151, Other Aps: 3cce.7371.d48e (Channel:36 Score:416 RSSI:-84 dBm Penalty:0 Reason:140), TxPO:15 dBm, TxPN:15 dBm
 - This identifies:
 - The handset roamed to AP MAC 3cce.73c6.218e on Channel:36 with AP RSSI:-72 dBm
 - The handset roamed from AP MAC 3cce.736d.c8ae on Channel:161 with AP RSSI:-45 dBm because of Reason 151 (Lost AP - Missed Beacons from AP)
 - The TxPO:15 dBm (Old AP TX Power is 15 dBm [~31mw], the handset TX Power will match)
 - The TXPN:15dBm (New AP TX Power is 15dBm, the handset will match)

Calls Have been Placed to

- Jun 26 08:11:20 10.10.129.5 Jan 01 06:42:57 10.10.129.5 SipService[2817]: 00907a123903|1420159376820|SipService|6|00| placeCall to sip:61027@10.35.207.160, pjAcctId =1
 - This identifies a call has been placed to x61027 using SIP Server IP address 10.35.207.160

Module Detail Data by Log Level

The following bulleted list provides detail on each logging module name and log level:

App Communication (log.level.change.acom)

- Direct [*] level entries:
 - log.level.change.acom="1"
 - log.level.change.acom="2"
 - log.level.change.acom="3"
 - 000019.970|acom |3|00|New spipgui application connection is detected from 127.0.0.1:37074.
 - 0103151806|acom |3|00|New dbs application connection is detected from 127.0.0.1:38610.
 - 0103151807|acom |3|00|New osd application connection is detected from 127.0.0.1:39378.
 - 0103151807|acom |3|00|New browser application connection is detected from 127.0.0.1:39890.
 -
 - log.level.change.acom="4"
 - 0410135221|acom |4|00|App "ec" has failed to read a message, error number = 92
 - 0410135221|acom |4|00|Application ec from 127.0.0.1 [406] has been disconnected.
 - log.level.change.acom="5"
 - 0410135221|acom |5|00|AppComServer encountered a connection error.
 - Log.level.change.acom="6"

Application [log.level.change.app1]

- Direct [*] Level entries:
 - 000010.522|app1 |*|01|Initial log entry. Current logging level 3
 -
 - 000110.066|app1 |*|00|#### Battery authentication success
 - 000110.067|app1 |*|00|[AppUiMisc]:Battery is VERY LOW
 - 000024.251|app1 |*|00|[AppUiMisc]:Battery is very low, SHUTDOWN
 - 000024.251|app1 |*|00|[AppUiMisc]:handleVeryLowBatteryNotifyAlert: Low Battery Shutdown Notification Started
 - 000034.395|app1 |*|00|[AppUiMisc]:handleVeryLowBatteryNotifyAlert: LowBatteryShutdown
 - 001041.509|app1 |*|00|Manual Restart
 - 000144.181|app1 |*|00|Manual Reboot
 - 001042.364|app1 |*|00|AppC::appReconfigure corp dir shutdown complete
 - 001105.521|app1 |*|00|Initial log entry. Current logging level 4
 - 011654.481|app1 |*|00|AppC::appReboot corp dir shutdown complete
 - 000159.805|app1 |*|00|Event: Multiple Key Combo 1
 - 1210190921|app1 |*|00|Event: Multiple Key Combo 7

- 1210190921|app1 |*|00|SoRegistrationEventLineDeleted - new AppRegLineC, Default user
- 000314.539|app1 |*|00|AppPhoneC::AppPhoneC() Number Of Line Keys = 6
- 000314.539|app1 |*|00|AppPhoneC::AppPhoneC() - new AppRegLineC, Default user
- 000038.452|app1 |*|00|AppPhoneC::AppPhoneC() - new AppRegLineC, szUser = 215
- 1210190924|app1 |*|00|SoRegistrationEventLast - new AppRegLineC, szUser = sip:sydney@nostrand.net
- 001510.765|app1 |*|00|Factory reset, log files uploading...
- 001511.770|app1 |*|00|Restored default configuration.
- 000612.750|app1 |*|00|Restored default configuration.
- 000615.767|app1 |*|00|*****
- 000615.767|app1 |*|00|WARNING: Flash config reset.
-
- log.level.change.app1="1"
 - [Battery] Status Summary info
 - 003233.404|app1 |1|3203|AppC::sendKeyToFd: qtkey=ea.
 - 003235.315|app1 |1|3203|[spigui] XML Event menu:0, Data ;
 - 003235.315|app1 |1|3203|AppC::turnOnBacklight: IsUserInput: 0
 - 003235.316|app1 |1|3203|MenuC::DisplayContent() szUrl is menu:0, m_nCustomData = , GetID() = Contact Directory
 - 003235.316|app1 |1|3203|MenuC::DisplayContent() szUrl is recent, m_nCustomData = , GetID() = Call Lists
 - 003235.334|app1 |1|3203|[spigui] XML Event Action:HighLightedItem, Data value=0;;item=menu:0;reason=Key:Back-42
 - 003235.895|app1 |1|3203|[spigui] XML Event menu:0, Data ;;item=menu:0;reason=Key:Dialpad1-24
 - 003237.396|app1 |1|3203|MenuC::DisplayContent() szUrl is menu:0, m_nCustomData = , GetID() = Contact Directory
 - 003237.396|app1 |1|3203|MenuC::DisplayContent() szUrl is recent, m_nCustomData = , GetID() = Call Lists
 - 003237.834|app1 |1|3203|[spigui] XML Event Key:Back-42, Data ;item=menu:0;reason=Key:Back-42;action=pressed
 - 003237.834|app1 |1|3203|Local (On-board) Key 26 pressed, SoKeyFunc=81
 - 003237.835|app1 |1|3203|MenuC::DisplayContent() szUrl is menu:0, m_nCustomData = Contacts / Call Lists, GetID() = Contacts / Call Lists
 - 003237.836|app1 |1|3203|MenuC::DisplayContent() szUrl is menu:1, m_nCustomData = Settings, GetID() = Settings
 - 003237.836|app1 |1|3203|MenuC::DisplayContent() szUrl is menu:2, m_nCustomData = Applications, GetID() = Applications
 - 003237.836|app1 |1|3203|MenuC::DisplayContent() szUrl is menu:3, m_nCustomData = Messages, GetID() = Messages
 - 003240.056|app1 |1|3203|AppC::turnOnBacklight: IsUserInput: 0

- 003240.056|app1 |1|3203|MenuC::DisplayContent() szUrl is menu:0, m_nCustomData = Back, GetID() = Platform
- 003240.056|app1 |1|3203|MenuC::DisplayContent() szUrl is menu:1, m_nCustomData = , GetID() = Network
- 003240.056|app1 |1|3203|MenuC::DisplayContent() szUrl is menu:2, m_nCustomData = Back, GetID() = Lines
- 003240.056|app1 |1|3203|MenuC::DisplayContent() szUrl is menu:3, m_nCustomData = Back, GetID() = Diagnostics
- 003240.056|app1 |1|3203|MenuC::DisplayContent() szUrl is menu:4, m_nCustomData = Back, GetID() = Licenses
- 003240.057|app1 |1|3203|MenuC::DisplayContent() szUrl is menu:5, m_nCustomData = Back, GetID() = Bluetooth
- 081756.097|app1 |1|00|AppC::sendKeyToFd: qtkey=6a.
- 081814.983|app1 |1|00|[spipgui] XML Event Action:UIIdleTimeElapsed, Data value=5000
- 081826.429|app1 |1|00|[browser] XML Event Action:StatusReport, Data memInUse=2532
- 081849.989|app1 |1|00|[spipgui] XML Event Action:IdleTimeout, Data
- 0103151806|app1 |1|00|[AppRegLineC::AddServerIP] server order 0 = IP=192.168.3.15 added
- 0103151809|app1 |1|00|[AppUiC]: SpeedDialIndex 1 = Number:3235896864.
- 0103151809|app1 |1|00|[AppUiC]: SpeedDialIndex 2 = Number:2815810916.
- 0103151810|app1 |1|00|[browser] XML Event Action:MediaStatusReport, Data value=1
- 0103151810|app1 |1|00|[browser] XML Event Action:RequestTranslation, Data value=414,415,357,36,37,0,140,73,344,1462,1463,1464,1465,1466,1467,1468,1469,1470,1471,1472,1473,1474,1475,1476,1477,1478,1479,1480,1481,1975,1977,1980,1981,1982
- 0103151815|app1 |1|00|[spipgui] XML Event backgroundimg, Data path=;info=true;
- 103151807|app1 |1|00|AppC::turnOnBacklight: IsUserInput: 0
-
- Log.level.change.app1="2"
 - [Server IP List] info
 - 0612150250|app1 |2|1754|AppRegLineC::OnEvRegistrarUpdate [usrIx:0], [nServer:1], [state:0], [Expire:0].
 - 0612150326|app1 |2|1754|[AppHybridC] handleServerInfo - Event: 0x2d
 - 0612150326|app1 |2|1754|SetLineIcon nLind = 0, Solcon[5]
 - 0612150326|app1 |2|1754|AppRegLineC::OnEvRegistrarUpdate [usrIx:0], [nServer:0], [state:2], [Expire:120].
 - 0612150326|app1 |2|1754|[AppHybridC] MsgAppNcasRegName [Server IP List] for Line[0], order[0] IP[10.225.8.20]

- 003233.275|app1 |2|3203|AppC::keyCbFunc: appKeyFunc = 2, scanCode = 106, hwId = 22.
- 003233.275|app1 |2|3203|AppC::keyCbFunc: ignoring low-priority key, 'ArrowRight', while in power-saving mode.
- 003235.315|app1 |2|3203|Carousel SELECT resdico=1717
- 003235.898|app1 |2|3203|[CDirectoryMenu]: UpdateMenuItems Error code 4
- 081754.236|app1 |2|00|AppC::keyCbFunc: ignoring low-priority key, 'ArrowRight', while in power-saving mode.
- 103113120|app1 |2|00|[AppPhoneC]: ServerInfo 192.168.3.15:5060 - 0 - 1 - no - 0
- 103113120|app1 |2|00|[AppPhoneC]: ServerInfo bertrand.net:0 - 0 - 1 - no - 1
- 103113120|app1 |2|00|[AppPhoneC]: ServerInfo User 0 - Freshly Added
- 103151806|app1 |2|00|[AppPhoneC]: ServerInfo User 0 - Updated
- 103151809|app1 |2|00|[AppUiC]: End of CfgDirSpeedDialIteratorC with code 4. Total 18 items retrieved from directory.
- 103151809|app1 |2|00|[AppUiC]: initSpeedDial called.
-
- Log.level.change.app1="3"
 - 000010.563|app1 |3|01|BootL1 is already up to date.
 - 000010.599|app1 |3|01|BootBlock is already up to date.
 - 000010.620|app1 |3|01|Starting provisioning because of the start type.
 - 000026.503|app1 |3|01|DNS resolver servers are '192.168.3.15' '4.2.2.2'
 - 000026.503|app1 |3|01|DNS resolver search domain is 'bertrand.net'
 - 000026.503|app1 |3|01|DHCP returned result 0x3A7 from server 192.168.3.15.
 - 000026.503|app1 |3|01| Phone IP address is 192.168.3.54.
 - 000026.503|app1 |3|01| Subnet mask is 255.255.255.0.
 - 000026.503|app1 |3|01| Gateway address is 192.168.3.1.
 - 000026.504|app1 |3|01| Time server is 209.167.68.100.
 - 000026.504|app1 |3|01| DNS server is 192.168.3.15.
 - 000026.504|app1 |3|01| DNS alternate server is 4.2.2.2.
 - 000026.504|app1 |3|01| DNS domain is bertrand.net.
 - 000026.504|app1 |3|01| Syslog server is 192.168.3.15.
 - 1227202733|app1 |3|01|Time has been set from 209.167.68.100 (209.167.68.100).
 - 1227202733|app1 |3|01| 1356640053: 2012-12-27, 20:27:33, DST off
 - 1227203502|app1 |3|01|Application, load: Type=SIP, Version=4.2.0.0001 10-Oct-12 17:04
 - 000019.892|app1 |3|00|[AppUiMisc]:Battery is High
 - 000010.620|app1 |3|01|Starting provisioning because of the start type.
 -
- Log.level.change.app1="4"
 - 1227203502|app1 |4|01|Loaded application sip.Id from local system successfully.
 -
 - 000021.620|app1 |4|00|[AppUiMisc]: Battery set standby current failed.

- 000019.239|app1 |4|00|[AppUserLoginC::Init]:flushing user cache file failed
- 1210190921|app1 |4|00|SoRegistrationEventLineDelete - failed due to lineIndex 1 != RegListSize 1
- 1210190924|app1 |4|00|SoRegistrationEventLineAdded - failed due to lineIndex 1 != RegListSize 0
- 1210291652|app1 |4|00|[AppHybridC::procCfgParamChange] unexpected element param Id=(2047)
- 1210291652|app1 |4|00|[AppHybridC::fsmLclEvent] This array param Id=(196) has a mismatching index (5)
- 1210291652|app1 |4|00|[AppHybridC::fsmLclEvent] This array param Id=(198) has a mismatching index (7)
- 1210291652|app1 |4|00|[AppHybridC::fsmLclEvent] This array param Id=(198) has a mismatching index (8)
- 1210291652|app1 |4|00|[AppHybridC::fsmLclEvent] This array param Id=(198) has a mismatching index (9)
- 1210291134|app1 |4|00|AppPhoneC::OnEvGroupsUpdate - Action: Add, Id: 1, Name: '~' discarded. Group already present
- 000301.231|app1 |4|00|AppC::keyCbFunc: Failed to write to fd 143, error 0x5.
- 000304.773|app1 |4|00|AppC::keyCbFunc: Failed to write to fd -1, error 0x9.
- 000246.914|app1 |4|00|[AppUserLoginC::handleCfgChange] unexpected type=(4)
- 000842.246|app1 |4|00|[AppUserLoginC::handleCfgChange] local password changed
- 000359.266|app1 |4|00|[AppUserLoginC::handleCfgChange]:Disabling user login feature requires restart
- 001250.706|app1 |4|678|GetCallOrder Could not find the call
- 000023.944|app1 |4|00|Could not initialize resolver library with server 0.0.0.0 and domain .
- 000023.945|app1 |4|00|Could not load time from (0.0.0.0).
- 000218.660|app1 |4|00|Loaded application /fcs/sip.Id from local system successfully.
-
- Log.level.change.app1="5"
 - 011654.474|app1 |5|00|Manual Reboot
 - 044603.540|app1 |5|00|SHUTDOWN
 - 000021.796|app1 |5|00|[procLclMsg]: dbDirSet activated
 - 000024.075|app1 |5|00|Preliminary Updater, beta use only.
 - 000053.366|app1 |5|00|Updater (3111-36152-001.sip.Id) has an incorrect signature.
 -
- Log.level.change.app1="6"
 - 1227203502|app1 |6|01|Uploading boot log, time is Thu Dec 27 20:35:03 2012
 - 000218.661|app1 |6|00|Uploading boot log, time is Sat Jan 1 00:08:35 2000
 -

ARES (log.level.change.ares)

- Direct [*] Level entries:
- log.level.change.ares="1"
 - 000024.641|ares |1|00|aresDnsLookup: loopGuard 48
 - 000024.660|ares |1|00|'SRV' lookup for '_ntp._udp.north-america.pool.ntp.org' - TTL: -1 loopCount 1
 - 000024.665|ares |1|00|'A' lookup for 'north-america.pool.ntp.org' - TTL: 29 loopCount 1
 - 0103151810|ares |1|00|'A' lookup for 'pool.nostrand.net.' - TTL: 3600 loopCount 1
 - 0103151810|ares |1|00|'SRV' lookup for '_sipinternal._tcp.nostrand.net' - TTL: -1 loopCount 1
 - 0103151810|ares |1|00|'SRV' lookup for '_sip._tls.nostrand.net' - TTL: 3600 loopCount 1
 - 0103151810|ares |1|00|'SRV' lookup for '_sip._tcp.nostrand.net' - TTL: -1 loopCount 1
 - 0103151810|ares |1|00|'A' lookup for 'sipinternal.nostrand.net' - TTL: -1 loopCount 1
 - 0103151810|ares |1|00|'A' lookup for 'sip.nostrand.net' - TTL: -1 loopCount 1
 - 0103151810|ares |1|00|'A' lookup for 'sipexternal.nostrand.net' - TTL: -1 loopCount 1
- log.level.change.ares ="2"
- log.level.change.ares ="3"
 - 000024.660|ares |3|00|callback: Domain name not found
 -
- log.level.change.ares ="4"
- log.level.change.ares ="5"
- log.level.change.ares ="6"

Background Dialog (log.level.change.bdiag)

- Direct [*] Level entries:
- log.level.change.bdiag="1"
- log.level.change.bdiag ="2"
- log.level.change.bdiag ="3"
- log.level.change.bdiag ="4"
- log.level.change.bdiag ="5"
- log.level.change.bdiag ="6"

Barcode (log.level.change.barcd)

- Direct [*] Level entries:
- log.level.change.barcd="1"
 - 0103151837|barcd |1|174|[BarCode]: MsgID 13829
- log.level.change.barcd ="2"
 - 0103151837|barcd |2|174|[BarCode]: powerOff
 -
- log.level.change.barcd ="3"

- log.level.change.barcd ="4"
- log.level.change.barcd ="5"
- log.level.change.barcd ="6"

Bluetooth (log.level.change.bluet)

- Direct [*] Level entries:
- log.level.change.bluet="1"
 - 000020.211|bluet|1|00|BtDBusProc starting
 - 000020.214|bluet|1|00|Get on System Bus
 - 000020.231|bluet|1|00|Create Manager proxy
 - 000020.254|bluet|1|00|Agent: Setup
 - 000020.211|bluet|1|00|BtDBusProc starting
 - 000021.211|bluet|1|00|BtMgrProc ready
 - 000021.211|bluet|1|00|BT Mgr processing msg: 3802
 - 000021.211|bluet|1|00|WARNING: Bluetooth already Off
- log.level.change.bluet ="2"
- log.level.change.bluet ="3"
- log.level.change.bluet ="4"
- log.level.change.bluet ="5"
- log.level.change.bluet ="6"

Bluetooth Driver (log.level.change.drvtbt)

- Direct [*] Level entries:
- log.level.change.drvtbt="1"
- log.level.change.drvtbt ="2"
- log.level.change.drvtbt ="3"
- log.level.change.drvtbt ="4"
- log.level.change.drvtbt ="5"
- log.level.change.drvtbt ="6"

Browser (log.level.change.brow)

- Direct [*] Level entries:
 - 0103151806|brow |*|00|Initial log entry. Current logging level 4
- log.level.change.brow="1"
- log.level.change.brow ="2"
 - 0103151807|brow |2|00|directory = /ffs0/.qws/share/data/browser, bPersistent = 1, fileName = /cookies.dat, storageLocation = //.qws/share/data//browser
 - 0103151810|brow |2|00|Nuance XT9 is disabled
 - 0103151810|brow |2|00|directory = /tmp/.qws/share/data/browser, bPersistent = 0, fileName = /urls.dat, storageLocation = //.qws/share/data//browser
 - 0103151810|brow |2|00|Database is set to 00907a0cdb48
- log.level.change.brow ="3"

- 0103151807|brow |3|00|browser Connected to SPIP Core application at 127.0.0.1:10010
- 0103151807|brow |3|00|CoreCom Error Detected: The connection was refused by the peer (or timed out)
- 0103151810|brow |3|00|0 certificate(s) has been loaded
- 0103151810|brow |3|00|idle URL configured as
- 0103151810|brow |3|00|main URL configured as
- 0103151810|brow |3|00|Database name changed to 00907a0cdb48
- log.level.change.brow ="4"
- log.level.change.brow ="5"
- log.level.change.brow ="6"

Buffer (log.level.change.dbuf)

- Direct [*] Level entries:
- log.level.change.dbuf="1"
- log.level.change.dbuf ="2"
- log.level.change.dbuf ="3"
- log.level.change.dbuf ="4"
- log.level.change.dbuf ="5"
- log.level.change.dbuf ="6"

Button Style (log.level.change.style)

- Direct [*] Level entries:
- log.level.change.style="1"
- log.level.change.style ="2"
- log.level.change.style ="3"
- log.level.change.style ="4"
- log.level.change.style ="5"
- log.level.change.style ="6"

Call list (log.level.change.clist)

- Direct [*] Level entries:
 - 0103151806|clist|*|00|Initial log entry. Current logging level 1
- log.level.change.clist="1"
 - 0103151807|clist|1|00|dbCallSet::onDBCreated:...
 - 0103151807|clist|1|00|dbSet::fromJournal:no journal
- log.level.change.clist ="2"
- log.level.change.clist ="3"
 - 0103151806|clist|3|00|dbCallSet::activateSet:user <00907a0cdb48> activated
- log.level.change.clist ="4"
- log.level.change.clist ="5"
- log.level.change.clist ="6"

Call Media Playback (log.level.change.cmp)

- Direct [*] Level entries:
- log.level.change.cmp="1"
- log.level.change.cmp ="2"
 - 0103151814|cmp |2|00|soVoiceRecordPlaybackStart: m_bytesPerSec:8000
 - 0103151814|cmp |2|00|soVoiceRecordPlaybackStart: m_numPlaybackBytes = 95868, readBytes = 16000
- log.level.change.cmp ="3"
- log.level.change.cmp ="4"
- log.level.change.cmp ="5"
- log.level.change.cmp ="6"

CDP (log.level.change.cdp)

- Direct [*] Level entries:
- log.level.change.cdp="1"
- log.level.change.cdp ="2"
- log.level.change.cdp ="3"
- log.level.change.cdp ="4"
- log.level.change.cdp ="5"
- log.level.change.cdp ="6"

Certificate (log.level.change.cert)

- Direct [*] Level entries:
- log.level.change.cert="1"
- log.level.change.cert ="2"
- log.level.change.cert ="3"
- log.level.change.cert ="4"
- log.level.change.cert ="5"
- log.level.change.cert ="6"

C-Link (log.level.change.clink)

- Direct [*] Level entries:
- log.level.change.clink="1"
- log.level.change.clink ="2"
- log.level.change.clink ="3"
- log.level.change.clink ="4"
- log.level.change.clink ="5"
- log.level.change.clink ="6"

Configuration (log.level.change.cfg)

- Direct [*] Level entries:
 - 000010.535|cfg |*|01|Initial log entry. Current logging level 2

- 000010.547|cfg |*|01|Prov|Updating the BootL1
- 000010.568|cfg |*|01|Prov|Updating the BootBlock
- 1227203024|cfg |*|01|Prov|Updating the Updater
- 1227203049|cfg |*|01|Prov|Image has been changed
- 1227203050|cfg |*|01|Prov|Provisioning needs to reboot to upgrade image(s)
- 1227203130|cfg |*|01|Prov|Updating the Application
- 0103151815|cfg |*|00|Prov|Starting to update 3111-36152-001.
- 1227203502|cfg |*|01|Prov|Succeeded updating file 3111-36152-001.sip.ld
- 000024.009|cfg |*|00|RT|Do not do DHCP VLAN Discovery.
- 000024.009|cfg |*|00|RT| Phone IP address is 192.168.3.54.
- 000024.009|cfg |*|00|RT| Subnet mask is 255.255.255.0.
- 000024.009|cfg |*|00|RT| Gateway address is 192.168.3.1.
- 000024.009|cfg |*|00|RT| DNS server is 192.168.3.15.
- 000024.009|cfg |*|00|RT| DNS alternate server is 4.2.2.2.
- 000024.009|cfg |*|00|RT| DNS domain is nostrand.net.
- 000024.009|cfg |*|00|RT| GMT offset is -21600 seconds.
- 000024.011|cfg |*|00|RT|Primary IP changed to 192.168.3.54 subnet mask 255.255.255.0
- 0103151815|cfg |*|00|Prov|Starting to update 3111-36152-001.
- 1227202733|cfg |*|01|Prov|Starting to update 3111-36152-001.sip.ld
- 0103151815|cfg |*|00|Prov|Setting device parameters from configuration files.
- 0103151815|cfg |*|00|Prov|Finished updating configuration
-
- log.level.change.cfg="1"
 - 000024.006|cfg |1|00|RT|dhcpStateCB::dhcp Appld 2
 - 000024.006|cfg |1|00|RT|dhcpStateCB:: Mode = wlanModeStandby, dhcp Appld 0
 - 000024.009|cfg |1|00|RT|dhcpStateCB: tiwlan0, state 0x2, event 0x1
 - 000024.581|cfg |1|00|RT|Network initialized.
 - 0103151806|cfg |1|00|Prov|cfgProvLocalPollTimer: Polling disabled
 - 0103151809|cfg |1|00|Dir|Contact|3234496864|fieldGet(2): returning "3234586864"
 - 0103151809|cfg |1|00|Dir|Contact|3234496864|fieldGet(1): returning "Angela"
 - 0103151809|cfg |1|00|Dir|Contact|3234496864|fieldGet(0): returning "Hubbard"
 - 0103151809|cfg |1|00|Dir|Contact|3234496864|fieldGet(3): returning "1"
 - 0103151809|cfg |1|00|Dir|Contact|3234496864|fieldGet(4): field does not exist
 - 0103151809|cfg |1|00|Dir|Contact|3234496864|fieldGet(5): field does not exist
 - 0103151809|cfg |1|00|Dir|Contact|2818510916|fieldGet(2): returning "2818510916"
 - 0103151809|cfg |1|00|Dir|Contact|2818510916|fieldGet(1): returning "Stan"
 - 0103151809|cfg |1|00|Dir|Contact|2818510916|fieldGet(0): returning "Nostrand"
 - 0103151814|cfg |1|00|Prov|Starting to provision
 - 0103151814|cfg |1|00|Prov|Starting to download file 00907a0cdb48.cfg
 - 0103151814|cfg |1|00|Prov|File 00907a0cdb48.cfg has not changed
 - 0103151814|cfg |1|00|Prov|Starting to download file 000000000000.cfg

- 0103151815|cfg |1|00|Prov|Updated file 000000000000.cfg
- 0103151815|cfg |1|00|Prov|Starting to download file level_1_logging.cfg
- 0103151815|cfg |1|00|Prov|File level_1_logging.cfg has not changed
- 0103151815|cfg |1|00|Prov|Starting to download file site.cfg
- 0103151815|cfg |1|00|Prov|File site.cfg has not changed
- 0103151815|cfg |1|00|Prov|Starting to download file qbc.cfg
- 0103151815|cfg |1|00|Prov|File qbc.cfg has not changed
- 0103151815|cfg |1|00|Prov|Starting to download file \Overrides/00907a0cdb48-phone.cfg
- 0103151815|cfg |1|00|Prov|File \Overrides/00907a0cdb48-phone.cfg has not changed
- 0103151815|cfg |1|00|Prov|Starting to download file \Overrides/00907a0cdb48-web.cfg
- 0103151815|cfg |1|00|Prov|Updated file \Overrides/00907a0cdb48-web.cfg
- 0103151815|cfg |1|00|Prm|Parsing level_1_logging.cfg.
- 0103151815|cfg |1|00|Prm|level_1_logging.cfg: Set configuration parameter device.syslog.serverName.set type Bool to true.
- 0103151815|cfg |1|00|Prm|level_1_logging.cfg: Set configuration parameter device.syslog.serverName type string to value "192.168.3.15".
- 0103151815|cfg |1|00|Prm|level_1_logging.cfg: Set configuration parameter device.syslog.transport.set type Bool to true.
- 0103151815|cfg |1|00|Prm|level_1_logging.cfg: Set configuration parameter device.syslog.transport type Enum to "UDP" (5).
- 0103151815|cfg |1|00|Prm|level_1_logging.cfg: Set configuration parameter device.syslog.facility.set type Bool to true.
- 0103151815|cfg |1|00|Prm|level_1_logging.cfg: Set configuration parameter device.syslog.facility type UInt to value 16.
- 0103151815|cfg |1|00|Prm|level_1_logging.cfg: Set configuration parameter device.syslog.renderLevel.set type Bool to true.
- 0103151815|cfg |1|00|Prm|level_1_logging.cfg: Set configuration parameter device.syslog.renderLevel type UInt to value 1.
- 0103151815|cfg |1|00|Prm|level_1_logging.cfg: Set configuration parameter device.syslog.prependMac.set type Bool to true.
- 0103151815|cfg |1|00|Prm|level_1_logging.cfg: Set configuration parameter device.syslog.prependMac type UInt to value 1.
- 0103151815|cfg |1|00|Prm|level_1_logging.cfg: Set configuration parameter log.level.change.slog type UInt to value 1.
- 0103151815|cfg |1|00|Prm|level_1_logging.cfg: Set configuration parameter log.render.file.upload.period type UInt to value 86400.
- 0103151815|cfg |1|00|Prm|level_1_logging.cfg: Set configuration parameter log.level.change.acom type UInt to value 1.

- 0103151815|cfg |1|00|Prm|level_1_logging.cfg: Set configuration parameter log.level.change.app1 type UInt to value 1.
- 0103151815|cfg |1|00|Prm|level_1_logging.cfg: Set configuration parameter log.level.change.ares type UInt to value 1.
- 0103151815|cfg |1|00|Prm|level_1_logging.cfg: Set configuration parameter log.level.change.bdiag type UInt to value 1.
- 0103151815|cfg |1|00|Prm|level_1_logging.cfg: Set configuration parameter log.level.change.barcd type UInt to value 1.
- 0103151815|cfg |1|00|Prm|level_1_logging.cfg: Set configuration parameter log.level.change.bluet type UInt to value 1.
- 0103151815|cfg |1|00|Prm|level_1_logging.cfg: Set configuration parameter log.level.change.drvt type UInt to value 1.
- 0103151815|cfg |1|00|Prm|level_1_logging.cfg: Set configuration parameter log.level.change.brow type UInt to value 1.
- 0103151815|cfg |1|00|Prm|level_1_logging.cfg: Set configuration parameter log.level.change.dbuf type UInt to value 1.
- 0103151815|cfg |1|00|Prm|level_1_logging.cfg: Set configuration parameter log.level.change.style type UInt to value 1.
- 0103151815|cfg |1|00|Prm|level_1_logging.cfg: Set configuration parameter log.level.change.clist type UInt to value 1.
- 0103151815|cfg |1|00|Prm|level_1_logging.cfg: Set configuration parameter log.level.change.cmp type UInt to value 1.
- 0103151815|cfg |1|00|Prm|level_1_logging.cfg: Set configuration parameter log.level.change.cdp type UInt to value 1.
- 0103151815|cfg |1|00|Prm|level_1_logging.cfg: Set configuration parameter log.level.change.cert type UInt to value 1.
- 0103151815|cfg |1|00|Prm|level_1_logging.cfg: Set configuration parameter log.level.change.clink type UInt to value 1.
- 0103151815|cfg |1|00|Prm|level_1_logging.cfg: Set configuration parameter log.level.change.cfg type UInt to value 1.
- 0103151815|cfg |1|00|Prm|level_1_logging.cfg: Set configuration parameter log.level.change.copy type UInt to value 1.
- 0103151815|cfg |1|00|Prm|level_1_logging.cfg: Set configuration parameter log.level.change.curl type UInt to value 1.
- 0103151815|cfg |1|00|Prm|level_1_logging.cfg: Set configuration parameter log.level.change.peer type UInt to value 1.
- 0103151815|cfg |1|00|Prm|Parsing site.cfg.
- 0103151815|cfg |1|00|Prm|site.cfg: Set configuration parameter bg.color.selection type string to value "2,1".
- 0103151815|cfg |1|00|Prm|site.cfg: Set configuration parameter apps.telNotification.callStateChangeEvent type Bool to false.

- 0103151815|cfg |1|00|Prm|site.cfg: Set configuration parameter apps.telNotification.incomingEvent type Bool to false.
- 0103151815|cfg |1|00|Prm|site.cfg: Set configuration parameter apps.telNotification.lineRegistrationEvent type Bool to false.
- 0103151815|cfg |1|00|Prm|site.cfg: Set configuration parameter apps.telNotification.offhookEvent type Bool to false.
- 0103151815|cfg |1|00|Prm|site.cfg: Set configuration parameter apps.telNotification.onhookEvent type Bool to false.
- 0103151815|cfg |1|00|Prm|site.cfg: Set configuration parameter apps.telNotification.outgoingEvent type Bool to false.
- 0103151815|cfg |1|00|Prm|site.cfg: Set configuration parameter apps.telNotification.userLogInOutEvent type Bool to false.
- 0103151815|cfg |1|00|Prm|site.cfg: Set configuration parameter attendant.ringType type Enum to "1" (26).
- 0103151815|cfg |1|00|Prm|site.cfg: Set configuration parameter bluetooth.radioOn type Bool to false.
- 0103151815|cfg |1|00|Prm|site.cfg: Set configuration parameter call.autoAnswer.ringClass type Enum to "4" (50).
- 0103151815|cfg |1|00|Prm|site.cfg: Set configuration parameter call.callWaiting.enable type Bool to true.
- 0103151815|cfg |1|00|Prm|site.cfg: Set configuration parameter call.callWaiting.ring type string to value "beep".
- 0103151815|cfg |1|00|Prm|site.cfg: Set configuration parameter call.parkedCallRetrieveMethod type string to value "native".
- 0103151815|cfg |1|00|Prm|site.cfg: Set configuration parameter call.parkedCallRetrieveString type string to value "*97".
- 0103151815|cfg |1|00|Prm|site.cfg: Set configuration parameter call.missedCallTracking.1.enabled type Bool to true.
- 0103151815|cfg |1|00|Prm|site.cfg: Set configuration parameter call.enableOnNotRegistered type Bool to false.
- 0103151815|cfg |1|00|Prm|site.cfg: Set configuration parameter callLists.logConsultationCalls type Bool to true.
- 0103151815|cfg |1|00|Prm|site.cfg: Set configuration parameter dialplan.applyToCallListDial type Bool to true.
- 0103151815|cfg |1|00|Prm|site.cfg: Set configuration parameter dialplan.applyToDirectoryDial type Bool to true.
- 0103151815|cfg |1|00|Prm|site.cfg: Set configuration parameter pres.idleTimeout.offHours.enabled type Bool to false.
- 0103151815|cfg |1|00|Prm|site.cfg: Set configuration parameter pres.idleTimeout.officeHours.enabled type Bool to false.
- 0103151815|cfg |1|00|Prm|site.cfg: Set configuration parameter feature.callList.enabled type Bool to true.

- 0103151815|cfg |1|00|Prm|site.cfg: Set configuration parameter feature.callListMissed.enabled type Bool to true.
- 0103151815|cfg |1|00|Prm|site.cfg: Set configuration parameter feature.callListPlaced.enabled type Bool to true.
- 0103151815|cfg |1|00|Prm|site.cfg: Set configuration parameter feature.callListReceived.enabled type Bool to true.
- 0103151815|cfg |1|00|Prm|site.cfg: Set configuration parameter feature.callPark.enabled type Bool to true.
- 0103151815|cfg |1|00|Prm|site.cfg: Set configuration parameter feature.directedCallPickup.enabled type Bool to true.
- 0103151815|cfg |1|00|Prm|site.cfg: Set configuration parameter feature.urlDialing.enabled type Bool to true.
- 0103151815|cfg |1|00|Prm|site.cfg: Set configuration parameter feature.corporateDirectory.enabled type Bool to true.
- 0103151815|cfg |1|00|Prm|site.cfg: Set configuration parameter feature.directory.enabled type Bool to true.
- 0103151815|cfg |1|00|Prm|site.cfg: Set configuration parameter feature.messaging.enabled type Bool to true.
- 0103151815|cfg |1|00|Prm|site.cfg: Set configuration parameter feature.presence.enabled type Bool to true.
- 0103151815|cfg |1|00|Prm|site.cfg: Set configuration parameter feature.enhancedFeatureKeys.enabled type Bool to true.
- 0103151815|cfg |1|00|Prm|site.cfg: Set configuration parameter feature.exchangeCalendar.enabled type Bool to false.
- 0103151815|cfg |1|00|Prm|site.cfg: Set configuration parameter dir.corp.address type string to value "ldap://192.168.3.15".
- 0103151815|cfg |1|00|Prm|site.cfg: Set configuration parameter dir.corp.autoQuerySubmitTimeout type UInt to value 0.
- 0103151815|cfg |1|00|Prm|site.cfg: Set configuration parameter dir.corp.backGroundSync type Bool to false.
- 0103151815|cfg |1|00|Prm|site.cfg: Set configuration parameter dir.corp.baseDN type string to value "CN=Users, DC=nostrand, DC=net".
- 0103151815|cfg |1|00|Prm|site.cfg: Set configuration parameter lcl.datetime.time.24HourClock type Bool to true.
- 0103151815|cfg |1|00|Prm|site.cfg: Set configuration parameter mb.main.idleTimeout type Sint to value 0.
- 0103151815|cfg |1|00|Prm|site.cfg: Set configuration parameter mb.main.statusbar type Bool to true.
- 0103151815|cfg |1|00|Prm|site.cfg: Set configuration parameter mb.ssawc.call.mode type string to value "active".
- 0103151815|cfg |1|00|Prm|site.cfg: Set configuration parameter mb.ssawc.enabled type Bool to true.

- 0103151815|cfg |1|00|Prm|site.cfg: Set configuration parameter np.normal.ringing.calls.tonePattern type Enum to "ringer9" (10).
- 0103151815|cfg |1|00|Prm|site.cfg: Set configuration parameter np.normal.ringing.toneVolume.chassis type SInt to value 6.
- 0103151815|cfg |1|00|Prm|site.cfg: Set configuration parameter prov.fileSystem.rfs0.minFreeSpace type UInt to value 5.
- 0103151815|ssps |1|00|sspsPktChanRxStatsSeqNumUpdate: duplicate seqNum detected (0)
- 0103151815|cfg |1|00|Prm|site.cfg: Set configuration parameter qos.ethernet.rtp.user_priority type UInt to value 6.
- 0103151815|cfg |1|00|Prm|site.cfg: Set configuration parameter qos.ethernet.callControl.user_priority type UInt to value 5.
- 0103151815|cfg |1|00|Prm|site.cfg: Set configuration parameter qos.ethernet.other.user_priority type UInt to value 2.
- 0103151815|cfg |1|00|Prm|site.cfg: Set configuration parameter qos.ip.callControl.dscp type string to value "26".
- 0103151815|cfg |1|00|Prm|site.cfg: Set configuration parameter qos.ip.rtp.dscp type string to value "46".
- 0103151815|cfg |1|00|Prm|site.cfg: Set configuration parameter qos.ip.rtp.video.dscp type string to value "46".
- 0103151815|cfg |1|00|Prm|site.cfg: Set configuration parameter res.finder.minFree type UInt to value 600.
- 0103151815|cfg |1|00|Prm|site.cfg: Set configuration parameter res.finder.sizeLimit type UInt to value 300.
- 0103151815|cfg |1|00|Prm|site.cfg: Set configuration parameter res.quotas.background type UInt to value 600.
- 0103151815|cfg |1|00|Prm|site.cfg: Set configuration parameter res.quotas.bitmap type UInt to value 10.
- 0103151815|cfg |1|00|Prm|site.cfg: Set configuration parameter res.quotas.cache type UInt to value 40.
- 0103151815|cfg |1|00|Prm|site.cfg: Set configuration parameter res.quotas.font type UInt to value 10.
- 0103151815|cfg |1|00|Prm|site.cfg: Set configuration parameter res.quotas.tone type UInt to value 300.
- 0103151815|cfg |1|00|Prm|site.cfg: Set configuration parameter res.quotas.xmlui type UInt to value 10.
- 0103151815|cfg |1|00|Prm|site.cfg: Set configuration parameter se.destination type Enum to "active" (6).
- 0103151815|cfg |1|00|Prm|site.cfg: Set configuration parameter tcpIpApp.ice.mode type Enum to "MSOCS" (3).
- 0103151815|cfg |1|00|Prm|site.cfg: Set configuration parameter tcpIpApp.keepalive.tcp.sip.tls.enable type Bool to true.

- 0103151815|cfg |1|00|Prm|site.cfg: Set configuration parameter tcpIpApp.snmp.address type string to value "north-america.pool.ntp.org".
- 0103151815|cfg |1|00|Prm|site.cfg: Set configuration parameter tcpIpApp.snmp.address.overrideDHCP type Bool to true.
- 0103151815|cfg |1|00|Prm|site.cfg: Set configuration parameter tcpIpApp.snmp.daylightSavings.enable type Bool to true.
- 0103151815|cfg |1|00|Prm|site.cfg: Set configuration parameter tcpIpApp.snmp.gmtOffset type SInt to value -21600.
- 0103151815|cfg |1|00|Prm|site.cfg: Set configuration parameter tcpIpApp.snmp.gmtOffset.overrideDHCP type Bool to true.
- 0103151815|cfg |1|00|Prm|site.cfg: Set configuration parameter up.useDirectoryNames type Bool to true.
- 0103151815|cfg |1|00|Prm|site.cfg: Set configuration parameter up.welcomeSoundOnWarmBootEnabled type Bool to true.
- 0103151815|cfg |1|00|Prm|site.cfg: Set configuration parameter video.callRate type SInt to value 448.
- 0103151815|cfg |1|00|Prm|site.cfg: Set configuration parameter video.maxCallRate type SInt to value 512.
- 0103151815|cfg |1|00|Prm|site.cfg: Set configuration parameter video.iFrame.delay type UInt to value 2.
- 0103151815|cfg |1|00|Prm|site.cfg: Set configuration parameter video.iFrame.onPacketLoss type Bool to true.
- 0103151815|cfg |1|00|Prm|site.cfg: Set configuration parameter voice.aec.hd.enable type Bool to true.
- 0103151815|cfg |1|00|Prm|site.cfg: Set configuration parameter voice.aes.hd.enable type Bool to true.
- 0103151815|cfg |1|00|Prm|site.cfg: Set configuration parameter video.callRate type SInt to value 448.
- 0103151815|cfg |1|00|Prm|site.cfg: Set configuration parameter video.maxCallRate type SInt to value 512.
- 0103151815|cfg |1|00|Prm|site.cfg: Set configuration parameter video.iFrame.delay type UInt to value 2.
- 0103151815|cfg |1|00|Prm|site.cfg: Set configuration parameter video.iFrame.onPacketLoss type Bool to true.
- 0103151815|cfg |1|00|Prm|site.cfg: Set configuration parameter voice.aec.hd.enable type Bool to true.
- 0103151815|cfg |1|00|Prm|site.cfg: Set configuration parameter voice.aes.hd.enable type Bool to true.
- 0103151815|cfg |1|00|Prm|site.cfg: Set configuration parameter voice.audioProfile.G7221.24kbps.payloadType type UInt to value 112.
- 0103151815|cfg |1|00|Prm|site.cfg: Set configuration parameter voice.codecPref.G711_A type SInt to value 17.

- 0103151815|cfg |1|00|Prm|site.cfg: Set configuration parameter voice.codecPref.G711_Mu type SInt to value 1.
- 0103151815|cfg |1|00|Prm|site.cfg: Set configuration parameter voice.codecPref.G719.32kbps type SInt to value 11.
- 0103151815|cfg |1|00|Prm|site.cfg: Set configuration parameter voice.codecPref.G719.48kbps type SInt to value 12.
- 0103151815|cfg |1|00|Prm|site.cfg: Set configuration parameter voice.codecPref.G719.64kbps type SInt to value 13.
- 0103151815|cfg |1|00|Prm|site.cfg: Set configuration parameter voice.codecPref.G722 type SInt to value 4.
- 0103151815|cfg |1|00|Prm|site.cfg: Set configuration parameter voice.codecPref.G7221.16kbps type SInt to value 2.
- 0103151815|cfg |1|00|Prm|site.cfg: Set configuration parameter voice.codecPref.G7221.24kbps type SInt to value 3.
- 0103151815|cfg |1|00|Prm|site.cfg: Set configuration parameter voice.codecPref.G7221_C.48kbps type SInt to value 15.
- 0103151815|cfg |1|00|Prm|site.cfg: Set configuration parameter voice.codecPref.G729_AB type SInt to value 18.
- 0103151815|cfg |1|00|Prm|site.cfg: Set configuration parameter voice.codecPref.iLBC.13_33kbps type SInt to value 5.
- 0103151815|cfg |1|00|Prm|site.cfg: Set configuration parameter voice.codecPref.iLBC.15_2kbps type SInt to value 6.
- 0103151815|cfg |1|00|Prm|site.cfg: Set configuration parameter voice.codecPref.Siren14.24kbps type SInt to value 7.
- 0103151815|cfg |1|00|Prm|site.cfg: Set configuration parameter voice.codecPref.Siren14.32kbps type SInt to value 8.
- 0103151815|cfg |1|00|Prm|site.cfg: Set configuration parameter voice.codecPref.Siren14.48kbps type SInt to value 16.
- 0103151815|cfg |1|00|Prm|site.cfg: Set configuration parameter voice.codecPref.Siren22.32kbps type SInt to value 9.
- 0103151815|cfg |1|00|Prm|site.cfg: Set configuration parameter voice.codecPref.Siren22.48kbps type SInt to value 10.
- 0103151815|cfg |1|00|Prm|site.cfg: Set configuration parameter voice.codecPref.Siren22.64kbps type SInt to value 14.
- 0103151815|cfg |1|00|Prm|site.cfg: Set configuration parameter voice.gain.tx.analog.chassis.IP_5000 type SInt to value 0.
- 0103151815|cfg |1|00|Prm|site.cfg: Set configuration parameter voice.headset.rxag.adjust.IP_450 type SInt to value 1.
- 0103151815|cfg |1|00|Prm|site.cfg: Set configuration parameter apps.1.label type string to value "Ebay".
- 0103151815|cfg |1|00|Prm|site.cfg: Set configuration parameter apps.2.label type string to value "Directron".

- 0103151815|cfg |1|00|Prm|site.cfg: Set configuration parameter apps.3.label type string to value "Cisco".
- 0103151815|cfg |1|00|Prm|site.cfg: Set configuration parameter apps.4.label type string to value "Spectralink".
- 0103151815|cfg |1|00|Prm|site.cfg: Set configuration parameter apps.5.label type string to value "USAtoday".
- 0103151815|cfg |1|00|Prm|site.cfg: Set configuration parameter apps.6.label type string to value "Facebook".
- 0103151815|cfg |1|00|Prm|site.cfg: Set configuration parameter apps.7.label type string to value "Google".
- 0103151815|cfg |1|00|Prm|site.cfg: Set configuration parameter apps.8.label type string to value "CNN".
- 0103151815|cfg |1|00|Prm|site.cfg: Set configuration parameter apps.9.label type string to value "YouTube".
- 0103151815|cfg |1|00|Prm|site.cfg: Set configuration parameter apps.10.label type string to value "Weather".
- 0103151815|cfg |1|00|Prm|site.cfg: Set configuration parameter apps.11.label type string to value "My Info Portal".
- 0103151815|cfg |1|00|Prm|site.cfg: Set configuration parameter apps.1.url type string to value "http://www.ebay.com".
- 0103151815|cfg |1|00|Prm|site.cfg: Set configuration parameter apps.2.url type string to value "http://www.directron.com".
- 0103151815|cfg |1|00|Prm|site.cfg: Set configuration parameter apps.3.url type string to value "http://www.cisco.com".
- 0103151815|cfg |1|00|Prm|site.cfg: Set configuration parameter apps.4.url type string to value "http://www.spectralink.com".
- 0103151815|cfg |1|00|Prm|site.cfg: Set configuration parameter apps.5.url type string to value "http://www.usatoday.com".
- 0103151815|cfg |1|00|Prm|site.cfg: Set configuration parameter apps.6.url type string to value "http://www.facebook.com".
- 0103151815|cfg |1|00|Prm|site.cfg: Set configuration parameter apps.7.url type string to value "http://www.google.com".
- 0103151815|cfg |1|00|Prm|site.cfg: Set configuration parameter apps.8.url type string to value "http://www.cnn.com".
- 0103151815|cfg |1|00|Prm|site.cfg: Set configuration parameter apps.9.url type string to value "http://www.youtube.com".
- 0103151815|cfg |1|00|Prm|site.cfg: Set configuration parameter apps.10.url type string to value "http://www.weather.com".
- 0103151815|cfg |1|00|Prm|site.cfg: Set configuration parameter apps.11.url type string to value "http://myinfoportal.apps.spectralink.com".
- 0103151815|cfg |1|00|Prm|site.cfg: Set configuration parameter ptt.callWaiting.enable type Bool to true.

- 0103151815|cfg |1|00|Prm|site.cfg: Set configuration parameter ptt.allowOffHookPages type Bool to true.
- 0103151815|cfg |1|00|Prm|site.cfg: Set configuration parameter ptt.displayName type string to value "PTT".
- 0103151815|cfg |1|00|Prm|site.cfg: Set configuration parameter ptt.pageMode.allowOffHookPages type Bool to true.
- 0103151815|cfg |1|00|Prm|site.cfg: Set configuration parameter ptt.pageMode.defaultGroup type UInt to value 6.
- 0103151815|cfg |1|00|Prm|site.cfg: Set configuration parameter ptt.pageMode.displayName type string to value "Page".
- 0103151815|cfg |1|00|Prm|site.cfg: Set configuration parameter ptt.pageMode.enable type Bool to false.
- 0103151815|cfg |1|00|Prm|site.cfg: Set configuration parameter ptt.pttMode.enable type Bool to true.
- 0103151815|cfg |1|00|Prm|site.cfg: Set configuration parameter ptt.channel.1.label type string to value "Default".
- 0103151815|cfg |1|00|Prm|site.cfg: Set configuration parameter ptt.channel.24.label type string to value "Priority".
- 0103151815|cfg |1|00|Prm|site.cfg: Set configuration parameter ptt.channel.25.label type string to value "Emergency".
- 0103151815|cfg |1|00|Prm|site.cfg: Set configuration parameter ptt.pageMode.group.6.label type string to value "Default".
- 0103151815|cfg |1|00|Prm|site.cfg: Set configuration parameter ptt.pageMode.group.24.label type string to value "Priority".
- 0103151815|cfg |1|00|Prm|site.cfg: Set configuration parameter ptt.pageMode.group.25.label type string to value "Emergency".
- 0103151815|cfg |1|00|Prm|site.cfg: Set configuration parameter volpProt.server.1.address type string to value "192.168.3.15".
- 0103151815|cfg |1|00|Prm|site.cfg: Set configuration parameter volpProt.server.1.port type SInt to value 5060.
- 0103151815|cfg |1|00|Prm|site.cfg: Set configuration parameter volpProt.server.1.transport type Enum to "UDPOnly" (1).
- 0103151815|cfg |1|00|Prm|site.cfg: Set configuration parameter volpProt.server.1.retryMaxCount type SInt to value 3.
- 0103151815|cfg |1|00|Prm|site.cfg: Set configuration parameter reg.1.server.1.address type string to value "192.168.3.15".
- 0103151815|cfg |1|00|Prm|site.cfg: Set configuration parameter reg.1.server.1.port type SInt to value 5060.
- 0103151815|cfg |1|00|Prm|site.cfg: Set configuration parameter reg.1.server.1.specialInterop type Enum to "Standard" (1).
- 0103151815|cfg |1|00|Prm|site.cfg: Set configuration parameter reg.1.server.1.register type Bool to true.

- 0103151815|cfg |1|00|Prm|site.cfg: Set configuration parameter reg.1.server.1.transport type Enum to "UDPOOnly" (1).
- 0103151815|cfg |1|00|Prm|site.cfg: Set configuration parameter reg.1.callsPerLineKey type SInt to value 3.
- 0103151815|cfg |1|00|Prm|site.cfg: Set configuration parameter up.screenCapture.enabled type Bool to true.
- 0103151815|cfg |1|00|Prm|site.cfg: Set configuration parameter reg.1.auth.useLoginCredentials type Bool to false.
- 0103151815|cfg |1|00|Prm|site.cfg: Set configuration parameter reg.1.auth.domain type string to value "nostrand.net".
- 0103151815|cfg |1|00|Prm|site.cfg: Set configuration parameter reg.2.auth.useLoginCredentials type Bool to false.
- 0103151815|cfg |1|00|Prm|site.cfg: Set configuration parameter reg.2.auth.domain type string to value "nostrand.net".
- 0103151815|cfg |1|00|Prm|site.cfg: Set configuration parameter reg.2.server.1.address type string to value "192.168.3.17".
- 0103151815|cfg |1|00|Prm|site.cfg: Set configuration parameter reg.2.server.1.port type SInt to value 5061.
- 0103151815|cfg |1|00|Prm|site.cfg: Set configuration parameter reg.2.type type string to value "private".
- 0103151815|cfg |1|00|Prm|site.cfg: Set configuration parameter reg.2.server.1.specialInterop type Enum to "lync2010" (4).
- 0103151815|cfg |1|00|Prm|site.cfg: Set configuration parameter reg.2.server.1.register type Bool to true.
- 0103151815|cfg |1|00|Prm|site.cfg: Set configuration parameter reg.2.server.1.transport type Enum to "TLS" (5).
- 0103151815|cfg |1|00|Prm|site.cfg: Set configuration parameter reg.2.telephony type Bool to true.
- 0103151815|cfg |1|00|Prm|site.cfg: Set configuration parameter reg.2.applyServerDigitMapLocally type Bool to true.
- 0103151815|cfg |1|00|Prm|site.cfg: Set configuration parameter reg.2.serverFeatureControl.signalingMethod type Enum to "serviceMsForwardContact" (3).
- 0103151815|cfg |1|00|Prm|site.cfg: Set configuration parameter reg.2.server.1.registerRetry.baseTimeout type UInt to value 10.
- 0103151815|cfg |1|00|Prm|site.cfg: Set configuration parameter reg.2.server.1.registerRetry.maxTimeout type UInt to value 180.
- 0103151815|cfg |1|00|Prm|site.cfg: Set configuration parameter sec.TLS.customCaCert.1 type string to value "-----BEGIN CERTIFICATE-----
 - MIIIDeTCCAmGgAwIBAgIQMpQ2SbgMnaFIZZMneHHvcDANBgkqhkiG9w0BAQUFADBPMR MwEQYKCIzImiZPyLGQBGRYDbmVOMRgwFgCZImiZPyLGQBGRYIYmVydHJhbmQxcBgNVB AMTFWJlcnRyYW5kLVdJTjJwMDhSMi1DQTAeFw0xMjA4MjQxNTMxMTFaFw0xNzA4MjQ xNTQxMDZaME8xEzARBgoJkiaJk/IsZAEZFgNuZXQxGDAWBgoJkiaJk/IsZAEZFghiZXJ0cmFu

ZDEeMBwGA1UEAVYmVydHJhbmQtV0lOMjAwOFlyLUNBMMIIBIjANBgkqhkiG9w0BAQEFA
AOCAQ8AMIIBCgKCAQEAnKxgSpEKomdWNIMu5zln

- 0103151815|cfg |1|00|Prm|site.cfg: Set configuration parameter sec.TLS.SIP.strictCertCommonNameValidation type Bool to false.
- 0103151815|cfg |1|00|Prm|site.cfg: Set configuration parameter sec.TLS.profile.1.caCert.application1 type Bool to true.
- 0103151815|cfg |1|00|Prm|site.cfg: Set configuration parameter sec.TLS.profileSelection.SIP type Enum to "ApplicationProfile1" (3).
- 0103151815|cfg |1|00|Prm|site.cfg: Set configuration parameter exchange.meeting.reminderEnabled type Bool to false.
- 0103151815|cfg |1|00|Prm|site.cfg: Set configuration parameter msg.mwi.1.callBackMode type string to value "contact".
- 0103151815|cfg |1|00|Prm|site.cfg: Set configuration parameter msg.mwi.1.callBack type string to value "999".
- 0103151815|cfg |1|00|Prm|site.cfg: Set configuration parameter roaming_buddies.reg type UInt to value 2.
- 0103151815|cfg |1|00|Prm|site.cfg: Set configuration parameter up.oneTouchVoiceMail type Bool to true.
- 0103151815|cfg |1|00|Prm|site.cfg: Set configuration parameter up.mwiVisible type Bool to true.
- 0103151815|cfg |1|00|Prm|site.cfg: Set configuration parameter device.set type Bool to true.
- 0103151815|cfg |1|00|Prm|site.cfg: Set configuration parameter device.wifi.ccxMandatory.set type Bool to true.
- 0103151815|cfg |1|00|Prm|site.cfg: Set configuration parameter device.wifi.ccxMandatory type UInt to value 0.
- 0103151815|cfg |1|00|Prm|site.cfg: Set configuration parameter oai.gateway.address type string to value "192.168.3.212".
- 0103151815|cfg |1|00|Prm|site.cfg: Set configuration parameter device.prov.serverType.set type Bool to true.
- 0103151815|cfg |1|00|Prm|site.cfg: Set configuration parameter device.prov.serverType type Enum to "FTP" (3).
- 0103151815|cfg |1|00|Prm|site.cfg: Set configuration parameter device.prov.serverName.set type Bool to true.
- 0103151815|cfg |1|00|Prm|site.cfg: Set configuration parameter device.prov.serverName type string to value "192.168.3.15".
- 0103151815|cfg |1|00|Prm|site.cfg: Set configuration parameter device.prov.user.set type Bool to true.
- 0103151815|cfg |1|00|Prm|site.cfg: Set configuration parameter device.prov.user type string to value "PlcmSpIp".
- 0103151815|cfg |1|00|Prm|site.cfg: Set configuration parameter device.prov.password type string to value "PlcmSpIp".

- 0103151815|cfg |1|00|Prm|site.cfg: Set configuration parameter device.prov.password.set type Bool to true.
- 0103151815|cfg |1|00|Prm|Parsing qbc.cfg.
- 0103151815|cfg |1|00|Prm|qbc.cfg: Set configuration parameter barcode.aimingBeamDuration type UInt to value 500.
- 0103151815|cfg |1|00|Prm|qbc.cfg: Other platform hardware specific parameter found for "barcode.aimingBeamDuration.SL8452"
- 0103151815|cfg |1|00|Prm|qbc.cfg: Ignoring other platform's hardware specific parameter "barcode.aimingBeamDuration".
- 0103151815|cfg |1|00|Prm|qbc.cfg: Set configuration parameter barcode.aimingBeamMode type UInt to value 0.
- 0103151815|cfg |1|00|Prm|qbc.cfg: Set configuration parameter barcode.centerDecodingActivation type Bool to false.
- 0103151815|cfg |1|00|Prm|qbc.cfg: Other platform hardware specific parameter found for "barcode.centerDecodingActivation.SL8452"
- 0103151815|cfg |1|00|Prm|qbc.cfg: Ignoring other platform's hardware specific parameter "barcode.centerDecodingActivation".
- 0103151815|cfg |1|00|Prm|qbc.cfg: Set configuration parameter barcode.centerDecodingTolerance type UInt to value 0.
- 0103151815|cfg |1|00|Prm|qbc.cfg: Other platform hardware specific parameter found for "barcode.centerDecodingTolerance.SL8452"
- 0103151815|cfg |1|00|Prm|qbc.cfg: Ignoring other platform's hardware specific parameter "barcode.centerDecodingTolerance".
- 0103151815|cfg |1|00|Prm|qbc.cfg: Set configuration parameter barcode.illuminationLevel type UInt to value 50.
- 0103151815|cfg |1|00|Prm|qbc.cfg: Set configuration parameter barcode.postambleTransmissionValue type string to value "".
- 0103151815|cfg |1|00|Prm|qbc.cfg: Set configuration parameter barcode.preambleTransmissionValue type string to value "".
- 0103151815|cfg |1|00|Prm|qbc.cfg: Set configuration parameter barcode.symbologyIdTransmission type UInt to value 0.
- 0103151815|cfg |1|00|Prm|qbc.cfg: Set configuration parameter barcode.symbology.aztec.enabled type Bool to true.
- 0103151815|cfg |1|00|Prm|qbc.cfg: Set configuration parameter barcode.symbology.aztec.GS1-128Emulation type Bool to false.
- 0103151815|cfg |1|00|Prm|qbc.cfg: Set configuration parameter barcode.symbology.aztec.structureAppendMode type Bool to false.
- 0103151815|cfg |1|00|Prm|qbc.cfg: Set configuration parameter barcode.symbology.codabar.checkDigitTransmission type Bool to false.
- 0103151815|cfg |1|00|Prm|qbc.cfg: Set configuration parameter barcode.symbology.codabar.checkDigitVerification type UInt to value 0.

- 0103151815|cfg |1|00|Prm|qbc.cfg: Set configuration parameter barcode.symbology.codabar.clsi type Bool to false.
- 0103151815|cfg |1|00|Prm|qbc.cfg: Set configuration parameter barcode.symbology.codabar.concatenation type UInt to value 0.
- 0103151815|cfg |1|00|Prm|qbc.cfg: Set configuration parameter barcode.symbology.codabar.concatenationMode type UInt to value 0.
- 0103151815|cfg |1|00|Prm|qbc.cfg: Set configuration parameter barcode.symbology.codabar.enabled type Bool to true.
- 0103151815|cfg |1|00|Prm|qbc.cfg: Set configuration parameter barcode.symbology.codabar.lengthL1 type UInt to value 6.
- 0103151815|cfg |1|00|Prm|qbc.cfg: Set configuration parameter barcode.symbology.codabar.lengthL2 type UInt to value 0.
- 0103151815|cfg |1|00|Prm|qbc.cfg: Set configuration parameter barcode.symbology.codabar.lengthL3 type UInt to value 0.
- 0103151815|ssps |1|00|sspsPktChanRxStatsSeqNumUpdate: duplicate seqNum detected (0)
- 0103151815|cfg |1|00|Prm|qbc.cfg: Set configuration parameter barcode.symbology.codabar.lengthMode type UInt to value 0.
- 0103151815|cfg |1|00|Prm|qbc.cfg: Set configuration parameter barcode.symbology.codabar.startStopTransmission type UInt to value 0.
- 0103151815|cfg |1|00|Prm|qbc.cfg: Set configuration parameter barcode.symbology.code11.checkDigitTransmission type UInt to value 1.
- 0103151815|cfg |1|00|Prm|qbc.cfg: Set configuration parameter barcode.symbology.code11.checkDigitVerification type UInt to value 1.
- 0103151815|cfg |1|00|Prm|qbc.cfg: Set configuration parameter barcode.symbology.code11.enabled type Bool to true.
- 0103151815|cfg |1|00|Prm|qbc.cfg: Set configuration parameter barcode.symbology.upcean.gtinProcessing type Bool to false.
- 0103151815|cfg |1|00|Prm|qbc.cfg: Set configuration parameter barcode.symbology.upcean.readingRange type UInt to value 1.
- 0103151815|cfg |1|00|Prm|qbc.cfg: Set configuration parameter barcode.symbology.upcean.addondigit.addon2 type Bool to false.
- 0103151815|cfg |1|00|Prm|qbc.cfg: Set configuration parameter barcode.symbology.upcean.addondigit.addon5 type Bool to false.
- 0103151815|cfg |1|00|Prm|qbc.cfg: Set configuration parameter barcode.symbology.upcean.addondigit.securityLevel type UInt to value 10.
- 0103151815|cfg |1|00|Prm|qbc.cfg: Set configuration parameter barcode.symbology.upcean.addondigit.transmission type Bool to false.
- 0103151815|cfg |1|00|Prm|qbc.cfg: Set configuration parameter barcode.symbology.upcean.isbn.enabled type Bool to true.
- 0103151815|cfg |1|00|Prm|qbc.cfg: Set configuration parameter qbc.connect.ipAddress-hostname type string to value "".

- 0103151815|cfg |1|00|Prm|qbc.cfg: Set configuration parameter qbc.connect.passphrase type string to value "magic247".
- 0103151815|cfg |1|00|Prm|qbc.cfg: Set configuration parameter qbc.encryption.enabled type Bool to true.
- 0103151815|cfg |1|00|Prm|qbc.cfg: Set configuration parameter qbc.connection.port type UInt to value 14394.
- 0103151815|cfg |1|00|Prm|qbc.cfg: Set configuration parameter qbc.inactivity.timeout type UInt to value 300000.
- 0103151815|cfg |1|00|Prm|qbc.cfg: Set configuration parameter qbc.keepalive.timeout type UInt to value 30000.
- 0103151815|cfg |1|00|Prm|qbc.cfg: Set configuration parameter qbc.operating.mode type string to value "multi".
- 0103151815|cfg |1|00|Prm|qbc.cfg: Set configuration parameter qbc.response.timeout type UInt to value 10000.
- 0103151815|cfg |1|00|Prm|qbc.cfg: Set configuration parameter qbc.start.connect.timeout type UInt to value 60000.
- 0103151815|cfg |1|00|Prm|Parsing Local configuration.
- 0103151815|cfg |1|00|Prm|Parsing Web configuration.
- 0103151815|cfg |1|00|Prm|Web configuration: Set configuration parameter ptt.defaultChannel type UInt to value 2.
- 0103151815|cfg |1|00|Prm|Web configuration: Set configuration parameter bg.color.bm.1.name type string to value "Greg_Pensive.jpg".
- 0103151815|cfg |1|00|Prm|Web configuration: Set configuration parameter ptt.channel.2.label type string to value "Channel 2".
- 0103151815|cfg |1|00|Prm|Web configuration: Set configuration parameter ptt.channel.2.subscribed type Bool to true.
- 0103151815|cfg |1|00|Prm|Web configuration: Set configuration parameter reg.1.address type string to value "505".
- 0103151815|cfg |1|00|Prm|Web configuration: Set configuration parameter reg.2.address type string to value "sip:greg@nostrand.net".
- 0103151815|cfg |1|00|Prm|Web configuration: Set configuration parameter reg.1.auth.password type string to value "505".
- 0103151815|cfg |1|00|Prm|Web configuration: Set configuration parameter reg.2.auth.password type string to value "Magic916".
- 0103151815|cfg |1|00|Prm|Web configuration: Set configuration parameter reg.1.auth.userId type string to value "505".
- 0103151815|cfg |1|00|Prm|Web configuration: Set configuration parameter reg.2.auth.userId type string to value "Greg".
- 0103151815|cfg |1|00|Prm|Web configuration: Set configuration parameter reg.1.displayName type string to value "Greg".
- 0103151815|cfg |1|00|Prm|Web configuration: Set configuration parameter reg.2.displayName type string to value "Gregory Nostrand".

- 0103151815|cfg |1|00|Prm|Web configuration: Set configuration parameter reg.1.label type string to value "Greg Nostrand x505".
- 0103151815|cfg |1|00|Prm|Web configuration: Set configuration parameter reg.2.label type string to value "GregoryB-IM".
- 0103151815|cfg |1|00|Prm|Web configuration: Set configuration parameter reg.1.lineKeys type Sint to value 4.
- 0103151815|cfg |1|00|RT|cfgFlashUpdate: Set device.prov.serverName type 1 to 192.168.3.15.
- 0103151815|cfg |1|00|RT|cfgFlashUpdate: Set device.prov.user type 1 to PlcmSplp.
- 0103151815|cfg |1|00|RT|cfgFlashUpdate: Set device.prov.password type 2 to PlcmSplp.
- 0103151815|cfg |1|00|RT|cfgFlashUpdate: Set device.syslog.serverName type 1 to 192.168.3.15.
- 0103151815|cfg |1|00|RT|cfgFlashUpdate: Set enum device.syslog.transport to 1
- 0103151815|cfg |1|00|RT|cfgFlashUpdate: Set UInt device.syslog.facility to 16
- 0103151815|cfg |1|00|RT|cfgFlashUpdate: Set UInt device.syslog.renderLevel to 1
- 0103151815|cfg |1|00|RT|cfgFlashUpdate: Set UInt device.syslog.prependMac to 1
- 0103151815|cfg |1|00|RT|cfgFlashUpdate: Set UInt device.wifi.ccxMandatory to 0
- log.level.change.cfg ="2"
 - 1227202733|cfg |2|01|Container image 1 header 0x4f4 0x270 0x270 0x0
 - 1227202733|cfg |2|01|Prov|Starting to provision master configuration file
 - 1227202733|cfg |2|01|Container image 2 header 0x2a2a764 0x26c 0x0 0x0
 -
 - 000024.581|cfg |2|00|Prm|cfgParamCbGenericSet set CblceRestart(24) to 1e34f8 0.
 - 000024.581|cfg |2|00|Prm|cfgParamCbGenericSet set Cblce(23) to 1e58b4 0.
 - 000024.610|cfg |2|00|Prm|cfgParamCbSet set CbSipStack(46) to 1aa3bc 8f3528.
 - 000024.610|cfg |2|00|Prm|cfgParamCbSet set CbSipLog(45) to 1aa364 0.
 - 0103151806|cfg |2|00|Prm|cfgParamFileSave: source 6 has no changes
 - 0103151806|cfg |2|00|Prov|CfgDhcpInformControl::InformTask: Polling status
 - 0103151806|cfg |2|00|Prm|cfgParamCbSet set CbCallDB(15) to 1349cc 0.
 - 0103151809|cfg |2|00|Dir|0xe88e98|Successfully read contact 7137879721
 - 0103151809|cfg |2|00|Dir|0xe88e98|Successfully read contact 9094817739
 - 0103151809|cfg |2|00|Dir|0xe88e98|Successfully read contact 2816391100
 - 0103151809|cfg |2|00|Dir|0xe88e98|Successfully read contact 9092927819
 - 0103151809|cfg |2|00|Dir|0xe88e98|Successfully read contact 9367182875
 - 0103151809|cfg |2|00|Dir|0xe88e98|Successfully read contact 7135013304
 - 0103151809|cfg |2|00|Dir|0xe88e98|Successfully read contact 7135014062
 - 0103151809|cfg |2|00|Dir|0xe88e98|Successfully read contact 2815871556
 - 0103151809|cfg |2|00|Dir|0xe88e98|Successfully read contact 2488595175
 - 0103151809|cfg |2|00|Dir|0xe88e98|Successfully read contact 2818597785
 - 0103151809|cfg |2|00|Dir|0xe88e98|Successfully read contact 2816877876
 - 0103151814|cfg |2|00|Prm|cfgParamCbGenericSet set CbTelnetd(48) to 19e774 0.
 - 0103151814|cfg |2|00|Prov|Starting to provision master configuration file

- 0103151815|cfg |2|00|Prov|Master configuration file does not contain a miscellaneous file list
- 0103151815|cfg |2|00|Prov|File 3111-36152-001. was not present on the server
- 0103151815|cfg |2|00|Prov|Image has not changed
- 0103151815|cfg |2|00|Prov|Starting to provision config files
- 0103151815|cfg |2|00|Prov|Configuration has not changed
- 0103151815|cfg |2|00|Prov|Starting to provision local overrides
- 0103151815|cfg |2|00|Prov|Starting to provision web config
-
- log.level.change.cfg ="3"
 - 000010.568|cfg |3|01|New load header information:
 - 000010.568|cfg |3|01|Code length: 0x000229C8
 - 000010.568|cfg |3|01|Code Checksum: 0x00E662D5
 - 000010.568|cfg |3|01|Options: 0x00000020
 - 000010.599|cfg |3|01|BootBlock is already present
 - 000010.563|cfg |3|01|BootL1 is already present
 - 1227202733|cfg |3|01|Recognized container image
 - 1227202733|cfg |3|01|Application header is different
 - 1227202733|cfg |3|01|Application in container image 1 is different
 - 1227202733|cfg |3|01|Updater header is different
 - 1227202733|cfg |3|01|Updater in container image 2 is different
 - 1227202733|cfg |3|01|Using Updater
 - 1227203024|cfg |3|01|Using compatible image 0
 - 1227203043|cfg |3|01|Good image signature
 - 1227203046|cfg |3|01|Programming Updater from sector 320 to 575
 - 1227203048|cfg |3|01|Programming to sector 320 complete
 - 1227203130|cfg |3|01|Could not open application file for checking
 - 1227203130|cfg |3|01|Application in container image 1 is different
 - 1227203130|cfg |3|01|Using application
 - 1227203407|cfg |3|01|Programming 44212848 bytes into tffs in 4K blocks
 - 1227203421|cfg |3|01|Extracting application files
 - 1227203454|cfg |3|01|Finished extracting application files (OK)
 - 1227203501|cfg |3|01|File system is synchronized
 - 1227203503|cfg |3|01|Prov|Shutting down
 - 1227205634|cfg |3|01|Programming 44212848 bytes into tffs in 4K blocks
 - 000024.011|cfg |3|00|RT|New DHCP lease on network tiwlan0
 - 0103151806|cfg |3|00|Prm|cfgParamFileSave: There are no changes to be saved
 - 0103151809|cfg |3|00|Dir|0xe88e98|Cannot add contact 2815871556 to speed dial index: speed dial "15" is a duplicate
 - 0103151809|cfg |3|00|Dir|0xe88e98|Cannot add contact 2816877876 to speed dial index: speed dial "3" is a duplicate
 - 0103151815|cfg |3|00|Could not get all 512 bytes of the header

- 0103151815|cfg |3|00|Prov|Provisioning succeeded
- 0103151815|cfg |3|00|Prm|Configuration file(s) were parsed
- 0103151815|cfg |3|00|Prm|Local configuration was parsed
- 0103151815|cfg |3|00|Prm|Web configuration was parsed
- log.level.change.cfg ="4"
 - 1227203044|cfg |4|01|Removing application...
 -
 - 0103151807|cfg |4|00|Prov|Unknown suboption received for DHCP option 43
 - 0103151807|cfg |4|00|Prov|Invalid STS-URI: 'http://anon'
- log.level.change.cfg ="5"
 - 0409141421|cfg |5|01|Prov|Bad image signature in file 3111-36150-001.sip.ld
 - 0103151815|cfg |5|00|Prm|site.cfg: Invalid XML syntax near reg.1.srtp.enable"0" reg.1.srtp.offer, some configuration parameters may be ignored.
- log.level.change.cfg ="6"

Copy utilities (log.level.change.copy)

- Direct [*] Level entries:
 - 000010.556|copy |*|01|Initial log entry. Current logging level 3
 -
- log.level.change.copy ="1"
 - 000024.614|copy |1|00|Provisioning:Cipher suite = RSA:!EXP:!LOW:!NULL:!MD5:@STRENGTH
 -
- log.level.change.copy ="2"
 - 0103151815|copy |2|00|couldn't open updateFile /ffs0/newinit.mac for reading
 - 0103151815|copy |2|00|couldn't open updateFile /ffs0/ConfigNew/Local/phoneWeb.cfg for reading
- log.level.change.copy ="3"
 - 1227202733|copy |3|01|'tftp://192.168.1.31/00907a0cdb48.cfg' from '192.168.1.31'
 - 1227202733|copy |3|01|Download of '00907a0cdb48.cfg' FAILED on attempt 1 (addr 1 of 1)
 - 1227202733|copy |3|01|transport res: 69 respCode 0. transport error: TFTP: Access Violation. transport error buffer: TFTP: Access Violation.
 - 1227202733|copy |3|01|Update of '/ffs0/newinit.mac' failed, leaving local copy intact
 - 1227202733|copy |3|01|'tftp://192.168.1.31/000000000000.cfg' from '192.168.1.31'
 - 1227202733|copy |3|01|Download of '000000000000.cfg' succeeded on attempt 1 (addr 1 of 1)
 - 1227202733|copy |3|01|'tftp://192.168.1.31/3111-36152-001.sip.ld' from '192.168.1.31'
 - 1227203043|copy |3|01|Download of '3111-36152-001.sip.ld' succeeded on attempt 1 (addr 1 of 1)
 - 1227203404|copy |3|01|buffered_write: transfer terminated

- 1227203503|copy |3|01|'tftp://192.168.1.31/%5CLog_Files/00907a0cdb48-boot.log' to '192.168.1.31'
- 1227203503|copy |3|01|Upload of '\\Log_Files/00907a0cdb48-boot.log' succeeded on attempt 1 (addr 1 of 1)
-
- 000024.614|copy |3|00|'ftp://PlcmSpIp:****@192.168.3.15/%5CContacts/00907a0cdb48-directory.xml' from '192.168.3.15'
- 0103151806|copy |3|00|Upload of '\\Log_Files/00907a0cdb48-app.log' succeeded on attempt 1 (addr 1 of 1)
- 0103151809|copy |3|00|Download of '\\Contacts/00907a0cdb48-directory.xml' FAILED on attempt 1 (addr 1 of 1)
- 0103151809|copy |3|00|transport res: 78 respCode 550. transport error: Remote file not found. transport error buffer: Remote file not found.
- 0103151809|copy |3|00|Update of '/ffs0/local/local-directory_xml.zzz' failed, leaving local copy intact'
- 0103151814|copy |3|00|Download of 'Welcome.wav' succeeded on attempt 1 (addr 1 of 1)
- 0103151814|copy |3|00|Download of '00907a0cdb48.cfg' FAILED on attempt 1 (addr 1 of 1)
- 0103151814|copy |3|00|Update of '/ffs0/newinit.mac' failed, leaving local copy intact
- 0103151814|copy |3|00|'ftp://PlcmSpIp:****@192.168.3.15/000000000000.cfg' from '192.168.3.15'
- 0103151815|copy |3|00|Download of '000000000000.cfg' succeeded on attempt 1 (addr 1 of 1)
- 0103151815|copy |3|00|Download of 'Greg_Pensive.jpg' succeeded on attempt 1 (addr 1 of 1)
- 0103151815|copy |3|00|Download of '3111-36152-001.' FAILED on attempt 1 (addr 1 of 1)
- 0103151815|copy |3|00|transport res: 78 respCode 550. transport error: Remote file not found. transport error buffer: Remote file not found.
- 0103151815|copy |3|00|Download of 'level_1_logging.cfg' succeeded on attempt 1 (addr 1 of 1)
- 0103151815|copy |3|00|File /ffs0/ConfigNew/level_1_logging_cfg.zzz is up to date
- 0103151815|copy |3|00|Download of 'site.cfg' succeeded on attempt 1 (addr 1 of 1)
- 0103151815|copy |3|00|File /ffs0/ConfigNew/site_cfg.zzz is up to date
- 0103151815|copy |3|00|Download of 'qbc.cfg' succeeded on attempt 1 (addr 1 of 1)
- 0103151815|copy |3|00|File /ffs0/ConfigNew/qbc_cfg.zzz is up to date
- 0103151815|copy |3|00|Download of '\\Overrides/00907a0cdb48-phone.cfg' FAILED on attempt 1 (addr 1 of 1)
- 0103151815|copy |3|00|transport res: 78 respCode 550. transport error: Remote file not found. transport error buffer: Remote file not found.

- 0103151815|copy |3|00|Update of '/ffs0/ConfigNew/Local/phoneLocal.cfg' failed, leaving local copy intact
- 0103151815|copy |3|00|Download of '\Overrides/00907a0cdb48-web.cfg' succeeded on attempt 1 (addr 1 of 1)
- 0103151815|copy |3|00|Download of '000000000000-license.cfg' FAILED on attempt 1 (addr 1 of 1)
- 0103151815|copy |3|00|Download of '00907a0cdb48-license.cfg' FAILED on attempt 1 (addr 1 of 1)
- log.level.change.copy ="4"
- log.level.change.copy ="5"
- log.level.change.copy ="6"

CURL (log.level.change.curl)

- Direct [*] Level entries:
 - 000010.556|curl |*|01|Initial log entry. Current logging level 3
 -
- log.level.change.curl="1"
 - 0103113120|curl |1|00|HEADER_IN : 220 Unauthorize access to this server is strictly prohibited!!!
 - 0103113120|curl |1|00|HEADER_OUT: USER PlcmSplp
 - 0103113120|curl |1|00|HEADER_IN : 331 Password required for plcmspip
 - 0103113120|curl |1|00|HEADER_OUT: PASS XXXX
 - 0103113120|curl |1|00|HEADER_IN : 230 Logged on
 - 0103113120|curl |1|00|HEADER_OUT: PWD
 - 0103113120|curl |1|00|HEADER_IN : 257 "/" is current directory.
 - 0103113120|curl |1|00|HEADER_OUT: CWD \Log_Files
 - 0103113120|curl |1|00|HEADER_IN : 250 CWD successful. "/Log_Files" is current directory.
 - 0103113120|curl |1|00|HEADER_OUT: PASV
 - 0103113120|curl |1|00|HEADER_IN : 227 Entering Passive Mode (192,168,3,15,244,235)
 - 0103113120|curl |1|00|HEADER_OUT: TYPE I
 - 0103113120|curl |1|00|HEADER_IN : 200 Type set to I
 - 0103113120|curl |1|00|HEADER_OUT: SIZE 00907a0cdb48-app.log
 - 0103113120|curl |1|00|HEADER_IN : 550 File not found
 - 0103113120|curl |1|00|HEADER_OUT: TYPE A
 - 0103113120|curl |1|00|HEADER_IN : 200 Type set to A
 - 0103113120|curl |1|00|HEADER_OUT: LIST 00907a0cdb48-app.log
 - 0103113120|curl |1|00|HEADER_IN : 550 Directory not found.
 - 0103151806|curl |1|00|HEADER_IN : 227 Entering Passive Mode (192,168,3,15,244,236)
 - 0103151806|curl |1|00|HEADER_OUT: STOR 00907a0cdb48-app.log

- 0103151806|curl |1|00|HEADER_IN : 150 Connection accepted
- 0103151806|curl |1|00|HEADER_IN : 226 Transfer OK
- 0103151806|curl |1|00|HEADER_OUT: QUIT
- 0103151806|curl |1|00|HEADER_IN : 221 Goodbye
- 0103151806|curl |1|00|HEADER_OUT: TYPE I
- 0103151806|curl |1|00|HEADER_IN : 200 Type set to I
- 0103151806|curl |1|00|HEADER_OUT: SIZE 00907a0cdb48-app.log
- 0103151806|curl |1|00|HEADER_IN : 213 32434
- 0103151806|curl |1|00|HEADER_OUT: APPE 00907a0cdb48-app.log
- 0103151806|curl |1|00|HEADER_IN : 150 Connection accepted, restarting at offset 32434
- 0103151806|curl |1|00|HEADER_IN : 226 Transfer OK
- 0103151807|curl |1|00|HEADER_OUT: TYPE I
- events (65535), token (15)
- 0103151807|curl |1|00|HEADER_IN : 200 Type set to I
- 0103151807|curl |1|00|HEADER_OUT: SIZE 00907a0cdb48-app.log
- 0103151807|curl |1|00|HEADER_IN : 213 48604
- 0103151807|curl |1|00|HEADER_OUT: APPE 00907a0cdb48-app.log
- 0103151807|curl |1|00|HEADER_IN : 150 Connection accepted, restarting at offset 48604
- 0103151809|curl |1|00|HEADER_OUT: CWD \Contacts
- 0103151809|curl |1|00|HEADER_IN : 250 CWD successful. "/Contacts" is current directory.
- 0103151814|curl |1|00|HEADER_OUT: TYPE I
- 0103151814|curl |1|00|HEADER_IN : 200 Type set to I
- 0103151814|curl |1|00|HEADER_OUT: SIZE SoundPointIPWelcome.wav
- 0103151814|curl |1|00|HEADER_IN : 213 95926
- 0103151814|curl |1|00|HEADER_OUT: RETR SoundPointIPWelcome.wav
- 0103151814|curl |1|00|HEADER_IN : 150 Connection accepted
- 0103151815|curl |1|00|HEADER_OUT: SIZE 000000000000.cfg
- 0103151815|curl |1|00|HEADER_OUT: TYPE I
- 0103151815|curl |1|00|HEADER_IN : 213 856
- 0103151815|curl |1|00|HEADER_OUT: RETR 000000000000.cfg
- 0103151815|curl |1|00|HEADER_IN : 200 Type set to I
- 0103151815|curl |1|00|HEADER_OUT: SIZE Greg_Pensive.jpg
- 0103151815|curl |1|00|HEADER_IN : 150 Connection accepted
- 0103151815|curl |1|00|HEADER_IN : 200 Type set to I
- 0103151815|curl |1|00|HEADER_OUT: SIZE 3111-36152-001.
- 0103151815|curl |1|00|HEADER_OUT: QUIT
- 0103151815|curl |1|00|HEADER_IN : 550 File not found
- 0103151815|curl |1|00|HEADER_OUT: SIZE level_1_logging.cfg
- 0103151815|curl |1|00|HEADER_IN : 213 2712

- 0103151815|curl |1|00|HEADER_OUT: RETR level_1_logging.cfg
- 0103151815|curl |1|00|HEADER_IN : 150 Connection accepted
- 0103151815|curl |1|00|HEADER_IN : 226 Transfer OK
- 0103151815|curl |1|00|HEADER_OUT: SIZE site.cfg
- 0103151815|curl |1|00|HEADER_IN : 213 12112
- 0103151815|curl |1|00|HEADER_OUT: RETR site.cfg
- 0103151815|curl |1|00|HEADER_IN : 150 Connection accepted
- 0103151815|ssps |1|00|sspsPktChanRxStatsSeqNumUpdate: duplicate seqNum detected (0)
- 0103151815|curl |1|00|HEADER_IN : 226 Transfer OK
- 0103151815|curl |1|00|HEADER_OUT: SIZE qbc.cfg
- 0103151815|curl |1|00|HEADER_IN : 213 10119
- 0103151815|curl |1|00|HEADER_OUT: RETR qbc.cfg
- 0103151815|curl |1|00|HEADER_IN : 150 Connection accepted
- 0103151815|curl |1|00|HEADER_OUT: CWD /
- 0103151815|curl |1|00|HEADER_IN : 250 CWD successful. "/" is current directory.
- 0103151815|curl |1|00|HEADER_OUT: CWD \Overrides
- 0103151815|curl |1|00|HEADER_IN : 250 CWD successful. "/Overrides" is current directory.
- 0103151815|curl |1|00|HEADER_OUT: PASV
- 0103151815|curl |1|00|HEADER_OUT: SIZE 00907a0cdb48-phone.cfg
- 0103151815|curl |1|00|HEADER_IN : 550 File not found
- 0103151815|curl |1|00|HEADER_OUT: SIZE 00907a0cdb48-web.cfg
- 0103151815|curl |1|00|HEADER_IN : 213 669
- 0103151815|curl |1|00|HEADER_OUT: RETR 00907a0cdb48-web.cfg
- 0103151815|curl |1|00|HEADER_IN : 150 Connection accepted
- 0103151815|curl |1|00|HEADER_IN : 226 Transfer OK
- 0103151815|curl |1|00|HEADER_OUT: SIZE 000000000000-license.cfg
- 0103151815|curl |1|00|HEADER_IN : 550 File not found
- 0103151815|curl |1|00|HEADER_OUT: QUIT
- 0103151815|curl |1|00|HEADER_IN : 221 Goodbye
- 0103151815|curl |1|00|HEADER_OUT: SIZE 00907a0cdb48-license.cfg
- 0103151815|curl |1|00|HEADER_IN : 550 File not found
- 0103151918|curl |1|179|HEADER_IN : 200 Type set to l
- 0103151918|curl |1|179|HEADER_OUT: STOR 00907a0cdb48-boot.log
- 0103151918|curl |1|179|HEADER_IN : 150 Connection accepted
- log.level.change.curl ="2"
- log.level.change.curl ="3"
 - 000024.628|curl |3|00|timeout on name lookup is not supported
 - 000024.630|curl |3|00|About to connect() to 192.168.3.15 port 21 (#0)
 - 000024.631|curl |3|00| Trying 192.168.3.15...
 - 000024.631|curl |3|00|the local port callback returned 0

- 000024.631|curl |3|00|Local port: 64412
- 103113120|curl |3|00|Connected to 192.168.3.15 (192.168.3.15) port 21 (#0)
- 0103113120|curl |3|00|Entry path is '/'
- 0103113120|curl |3|00|Connect data stream passively
- 0103113120|curl |3|00|Local port: 19398
- 0103113120|curl |3|00|Connecting to 192.168.3.15 (192.168.3.15) port 62699
- 0103113120|curl |3|00|unexpected result (0) or ftpcode (550)after LIST
- 0103151806|curl |3|00|Remembering we are in dir "\\Log_Files/"
- 0103151806|curl |3|00|Connection #0 to host 192.168.3.15 left intact
- 0103151806|curl |3|00|Closing connection #0
- 0103151814|curl |3|00|Re-using existing connection (#0) with host 192.168.3.15
- 0103151814|curl |3|00|Connected to 192.168.3.15 (192.168.3.15) port 21 (#0)
- 0103151814|curl |3|00|Request has same path as previous transfer
- 0103151814|curl |3|00|Connect data stream passively
- 0103151815|curl |3|00|Maxdownload = -1
- 0103151815|curl |3|00|Getting file with size: 856
- 0103151815|curl |3|00|Maxdownload = -1
- 0103151815|curl |3|00|Getting file with size: 2712
- 0103151815|curl |3|00|Remembering we are in dir ""
- 0103151815|curl |3|00|Connection #0 to host 192.168.3.15 left intact
- 0103151815|curl |3|00|Maxdownload = -1
- 0103151815|curl |3|00|Getting file with size: 12112
- 0103151815|curl |3|00|Maxdownload = -1
- 0103151815|curl |3|00|Getting file with size: 669
- 0103151815|curl |3|00|Remembering we are in dir "\\Overrides/"
- 0103151815|curl |3|00|Remembering we are in dir ""
- 0103151815|curl |3|00|Connection #0 to host 192.168.3.15 left intact
- 0103151815|curl |3|00|Remote file not found
- 0103151815|copy |3|00|Download of '000000000000-license.cfg' FAILED on attempt 1 (addr 1 of 1)
-
-
- log.level.change.curl ="4"
- log.level.change.curl ="5"
- log.level.change.curl ="6"

Daisy Chaining (log.level.change.peer)

- Direct [*] Level entries:
- log.level.change.peer="1"
- log.level.change.peer="2"
- log.level.change.peer="3"
- log.level.change.peer="4"

- log.level.change.peer ="5"
- log.level.change.peer ="6"

Database (log.level.change.dbs)

- Direct [*] Level entries:
 - 0103151806|dbs |*|00|Initial log entry. Current logging level 4
 -
- log.level.change.dbs="1"
 - 0103151807|dbs |1|00|Executing command [CREATE TABLE IF NOT EXISTS dbCallList (direction INTEGER ,disposition INTEGER ,line TEXT ,protocol TEXT ,startTime TEXT ,duration TEXT ,count INTEGER ,local TEXT ,remote TEXT ,final TEXT)] from polyapp
 - 0103151807|dbs |1|00|Executing command [(null)] from polyapp
 - 0103151807|dbs |1|00|Executing command [SELECT OID, * FROM dbCallList] from polyapp
 - 0103151807|dbs |1|00|Executing command [CREATE TABLE IF NOT EXISTS dbCallList (direction INTEGER ,disposition INTEGER ,line TEXT ,protocol TEXT ,startTime TEXT ,duration TEXT ,count INTEGER ,local TEXT ,remote TEXT ,final TEXT)] from polyapp
 - 0103151807|dbs |1|00|Executing command [SELECT OID, * FROM dbDir] from spipgui
 - 0103151807|dbs |1|00|Executing command [SELECT OID, * FROM dbCallList] from spipgui
 - 0103151807|dbs |1|00|Executing command [CREATE TRIGGER unique_trigger BEFORE INSERT ON dbCallList WHEN EXISTS (SELECT * FROM dbCallList WHERE direction=NEW.direction AND disposition=NEW.disposition AND line=NEW.line AND protocol=NEW.protocol AND startTime=NEW.startTime AND duration=NEW.duration AND count=NEW.count AND local=NEW.local AND remote=NEW.remote AND final=NEW.final) BEGIN SELECT CASE WHEN(1) THEN RAISE(IGNORE) END; END] from polyapp
 - 0103151807|dbs |1|00|Executing command [CREATE TRIGGER collapse_trigger BEFORE INSERT ON dbCallList WHEN (NEW.duration="PT0S" AND EXISTS (SELECT * FROM dbCallList WHERE rowid=last_insert_rowid() AND direction=NEW.direction AND duration="PT0S" AND remote=NEW.remote AND final=NEW.final AND line=NEW.line AND startTime<>NEW.startTime AND disposition=NEW.disposition)) BEGIN UPDATE dbCallList SET count=count+1, startTime=NEW.startTime WHERE rowid=last_insert_rowid(); SELECT CASE WHEN(1) THEN RAISE(IGNORE) END; END] from polyapp
 - 0103151807|dbs |1|00|Executing command [CREATE TRIGGER call_list_unified AFTER INSERT ON dbCallList WHEN (SELECT COUNT(*) FROM dbCallList)>99 BEGIN DELETE FROM dbCallList WHERE rowid < (SELECT max(rowid) FROM dbCallList) - 98; END] from polyapp

- 0103151807|dbs |1|00|Executing command [] from polyapp
- 0103151807|dbs |1|00|Executing command [BEGIN IMMEDIATE TRANSACTION] from polyapp
- 0103151807|dbs |1|00|Executing command [INSERT OR IGNORE INTO dbCallList VALUES('Out','Normal','1','SIP','2012-12-09T18:00:50','PT0S',1,'{505','305{305','}') from polyapp
- 0103151807|dbs |1|00|Executing command [INSERT OR IGNORE INTO dbCallList VALUES('Out','Normal','1','SIP','2012-12-11T11:42:56','PT18S',1,'{505','405{405}405{405','}') from polyapp
- 0103151807|dbs |1|00|Executing command [INSERT OR IGNORE INTO dbCallList VALUES('In','Normal','2','SIP','2012-12-11T11:53:16','PT0S',1,'{sip:greg@nostrand.net','Mary K. Nostrand{sip:Mary@nostrand.net','}') from polyapp
- 0103151807|dbs |1|00|Executing command [INSERT OR IGNORE INTO dbCallList VALUES('In','Normal','1','SIP','2012-12-12T15:03:51','PT6M26S',1,'{505','Mary Nostrand{405}Mary Nostrand{405','}') from polyapp
- 0103151807|dbs |1|00|Executing command [INSERT OR IGNORE INTO dbCallList VALUES('In','Normal','1','SIP','2012-12-21T10:39:04','PT0S',1,'{505','Mary Nostrand{405','}') from polyapp
- 0103151807|dbs |1|00|Executing command [INSERT OR IGNORE INTO dbCallList VALUES('Out','Normal','1','SIP','2012-12-21T10:39:24','PT10S',1,'{505','{5126814085}5126814085{5126814085','}') from polyapp
- 0103151807|dbs |1|00|Executing command [INSERT OR IGNORE INTO dbCallList VALUES('Out','Normal','1','SIP','2012-12-21T11:20:29','PT10S',1,'{505','{5126814085}5126814085{5126814085','}') from polyapp
- 0103151807|dbs |1|00|Executing command [INSERT OR IGNORE INTO dbCallList VALUES('In','Normal','1','SIP','2012-12-27T13:12:04','PT3S',1,'{505','Les Nostrand{sip:305@192.168.3.15:5060}Les Nostrand{sip:305@192.168.3.15:5060','}') from polyapp
- 0103151807|dbs |1|00|Executing command [INSERT OR IGNORE INTO dbCallList VALUES('Out','Normal','1','SIP','2012-12-27T14:58:22','PT2S',1,'{505','305{305}305{305','}') from polyapp
- 0103151807|dbs |1|00|Executing command [COMMIT TRANSACTION] from polyapp
- 0103151807|dbs |1|00|Executing command [INSERT OR IGNORE INTO dbCallList VALUES('Out','Normal','1','SIP','2013-01-02T15:43:16','PT17M43S',1,'{505','305{305}305{305','}') from polyapp
- 0103151807|dbs |1|00|Executing command [INSERT OR IGNORE INTO dbCallList VALUES('Out','Normal','2','SIP','2013-01-02T16:05:47','PT18S',1,'{sip:greg@nostrand.net','Leslie G.

- Nostrand{Les@nostrand.net}Leslie G. Nostrand{sip:les@nostrand.net,'']} from polyapp
- 0103151807|dbs |1|00|Executing command [CREATE TRIGGER unique_trigger BEFORE INSERT ON dbCallList WHEN EXISTS (SELECT * FROM dbCallList WHERE direction=NEW.direction AND disposition=NEW.disposition AND line=NEW.line AND protocol=NEW.protocol AND startTime=NEW.startTime AND duration=NEW.duration AND count=NEW.count AND local=NEW.local AND remote=NEW.remote AND final=NEW.final) BEGIN SELECT CASE WHEN(1) THEN RAISE(IGNORE) END; END] from polyapp
 - 0103151807|dbs |1|00|Executing command [CREATE TRIGGER collapse_trigger BEFORE INSERT ON dbCallList WHEN (NEW.duration="PT0S" AND EXISTS (SELECT * FROM dbCallList WHERE rowid=last_insert_rowid() AND direction=NEW.direction AND duration="PT0S" AND remote=NEW.remote AND final=NEW.final AND line=NEW.line AND startTime<>NEW.startTime AND disposition=NEW.disposition)) BEGIN UPDATE dbCallList SET count=count+1, startTime=NEW.startTime WHERE rowid=last_insert_rowid(); SELECT CASE WHEN(1) THEN RAISE(IGNORE) END; END] from polyapp
 - 0103151807|dbs |1|00|Executing command [CREATE TRIGGER call_list_unified AFTER INSERT ON dbCallList WHEN (SELECT COUNT(*) FROM dbCallList)>99 BEGIN DELETE FROM dbCallList WHERE rowid < (SELECT max(rowid) FROM dbCallList) - 98; END] from polyapp
 - 0103151807|dbs |1|00|Executing command [INSERT OR IGNORE INTO dbCallList VALUES('Out','Normal','1','SIP','2012-12-09T18:00:50','PT0S',1,'{505}','305{305}',')] from polyapp
 - 0103151807|dbs |1|00|Executing command [INSERT OR IGNORE INTO dbCallList VALUES('In','Normal','2','SIP','2012-12-11T11:53:16','PT0S',1,'{sip:greg@nostrand.net}','Mary K. Nostrand{sip:Mary@nostrand.net,'}')] from polyapp
- o log.level.change.dbs ="2"
 - 0103151806|dbs |2|00|directory = /tmp/.qws/share/data/dbs, bPersistent = 0, fileName = 00907a0cdb48, storageLocation = //.qws/share/data//dbs
- o log.level.change.dbs ="3"
 - 0103151806|dbs |3|00|dbs Connected to SPIP Core application at 127.0.0.1:10010
 - 0103151807|dbs |3|00|Application 256 has subscribed to table dbCallList, events (65535), token (dbCallList-subscribe)
 - 0103151807|dbs |3|00|Application 256 has subscribed to table dbDir, events (65535), token (contacts-subscribe)
 - 0103151807|dbs |3|00|Application 1 has subscribed to table dbDir, events (65535), token ({1b73689f-d5fc-490b-822e-5d56bda2d54b})
 - 0103151807|dbs |3|00|DB request (src: 1, token: {1b73689f-d5fc-490b-822e-5d56bda2d54b}) failed, error message: no such table: dbDir

- 0103151807|dbs |3|00|Application 1 has subscribed to table dbCallList, events (65535), token ({051b4fbf-2d64-4cec-a56b-b1cf44c24a85})
- 0103151807|dbs |3|00|Application 256 has subscribed to table dbCallList, events (65535), token (5)
- 0103151807|dbs |3|00|Application 256 has subscribed to table dbCallList, events (65535), token (6)
- 0103151807|dbs |3|00|Application 256 has subscribed to table dbCallList, events (65535), token (7)
- 0103151807|dbs |3|00|Application 256 has subscribed to table dbCallList, events (65535), token (8)
- 0103151807|dbs |3|00|DB request (src: 256, token: 38) failed, error message: trigger unique_trigger already exists
 - 0103151807|dbs |3|00|DB request (src: 256, token: 39) failed, error message: trigger collapse_trigger already exists
 - 0103151807|dbs |3|00|DB request (src: 256, token: 40) failed, error message: trigger call_list_unified already exists
- log.level.change.dbs ="4"
- log.level.change.dbs ="5"
- log.level.change.dbs ="6"

DHCP Client (log.level.change.dhcpc)

- Direct [*] Level entries:
 - 000023.853|dhcpc|*|01|Initial log entry. Current logging level 4
- log.level.change.dhcpc="1"
- log.level.change.dhcpc ="2"
- log.level.change.dhcpc ="3"
 - 000023.951|dhcpc|3|00|dhcListener: Read succeeds: tiwlan0 ip: 192.168.3.54
 - 000023.952|dhcpc|3|00|dhcListener: Read succeeds: tiwlan0 option: subnet-mask 255.255.255.0
 - 000023.953|dhcpc|3|00|dhcListener: Read succeeds: tiwlan0 option: routers 192.168.3.1
 - 000023.953|dhcpc|3|00|dhcListener: Read succeeds: tiwlan0 option: domain-name-servers 192.168.3.15 4.2.2.2
 - 000023.953|dhcpc|3|00|dhcListener: Read succeeds: tiwlan0 option: domain-name nostrand.net
 - 000023.954|dhcpc|3|00|dhcListener: Read succeeds: tiwlan0 option: dhcp-lease-time 4294967295
 - 000023.954|dhcpc|3|00|dhcListener: Read succeeds: tiwlan0 option: dhcp-server-identifier 192.168.3.15
 - 000023.955|dhcpc|3|00|dhcListener: Read succeeds: tiwlan0 option: ntp-servers 209.167.68.100

- 000023.960|dhcpc|3|00|dhcListener: Read succeeds: tiwlan0 option: time-servers 69.164.206.65
- 000023.961|dhcpc|3|00|dhcListener: Read succeeds: tiwlan0 option: log-servers 192.168.3.15
- 000023.963|dhcpc|3|00|dhcListener: Read succeeds: tiwlan0 option: broadcast-address 192.168.3.255
- 000023.965|dhcpc|3|00|dhcListener: Read succeeds: tiwlan0 option: dhcp-lease-time 4294967295
- 000023.965|dhcpc|3|00|dhcListener: Read succeeds: tiwlan0 option: dhcp-message-type 5
- 000023.966|dhcpc|3|00|dhcListener: Read succeeds: tiwlan0 option: dhcp-renewal-time 536870910
- 000023.970|dhcpc|3|00|dhcListener: Read succeeds: tiwlan0 option: dhcp_rebinding_time 536870911
- 000024.004|dhcpc|3|00|dhcListener: Read succeeds: tiwlan0 state: BOUND
- log.level.change.dhcpc ="4"
- log.level.change.dhcpc ="5"
- log.level.change.dhcpc ="6"

DNS (log.level.change.dns)

- Direct [*] Level entries:
 - 000024.011|dns |*|00|DNS resolver servers are '192.168.3.15' '4.2.2.2'
 - 000024.011|dns |*|00|DNS resolver search domain is 'nostrand.net'
- log.level.change.dns="1"
 - 000024.614|dns |1|00|doDnsLookupForList for record A: hostname '192.168.3.15' attempting..
 - 000024.614|dns |1|00|doDnsLookupForList(A): returning passed in ipAddress '192.168.3.15'
 - 000024.635|dns |1|00|doDnsLookupForList for record SRV: hostname '_ntp._udp.north-america.pool.ntp.org' attempting..
 - 000024.661|dns |1|00|doDnsSrvLookupForARecordList(udp): SRV lookup returned nothing
 - 000024.662|dns |1|00|doDnsSrvLookupForARecordList(udp): Doing DNS A lookup (port 0)
 - 000024.662|dns |1|00|doDnsLookupForList for record A: hostname 'north-america.pool.ntp.org' attempting..
 - 000024.665|dns |1|00|doDnsSrvLookupForARecordList(udp): kept port at 0
 - 000024.722|dns |1|00|doDnsSrvLookupForARecordList(udp): Doing DNS A lookup (port 5060)
 - 000024.722|dns |1|00|doDnsSrvLookupForARecordList(udp): kept port at 5060
 - 0103151810|dns |1|00|doDnsLookupForList for record SRV: hostname '_sipinternaltls._tcp.bertrand.net' attempting..

- 0103151810|dns |1|00|target:port 'pool.bertrand.net.:5061'
- 0103151810|dns |1|00|srv: Added to tail
- 0103151810|dns |1|00|priority '0'
- 0103151810|dns |1|00|weight '0'
- 0103151810|dns |1|00|dnsSrv2A calling LookupForList(A) for 'pool.bertrand.net.' port 5061
- 0103151810|dns |1|00|doDnsLookupForList for record A: hostname 'pool.bertrand.net.' attempting..
- 0103151810|dns |1|00|dnsSrv2A for host '_sipinternaltls._tcp.bertrand.net' returned OK
- 0103151810|dns |1|00|doDnsSrvLookupForARecordList(tcp): SRV lookup returned nothing
- 0103151810|dns |1|00|doDnsLookupForList for record SRV: hostname '_sip._tls.bertrand.net' attempting..
- 0103151810|dns |1|00|dnsSrv2A for host '_sip._tls.bertrand.net' returned OK
- 0103151810|dns |1|00|doDnsLookupForList for record SRV: hostname '_sip._tcp.bertrand.net' attempting..
- 0103151810|dns |1|00|doDnsSrvLookupForARecordList(tls): Doing DNS A lookup (port 443)
- 0103151810|dns |1|00|doDnsSrvLookupForARecordList(tcp): Doing DNS A lookup (port 5060)
-
- log.level.change.dns ="2"
 - 000024.635|dns |2|00|Miss in All DNS cache for _ntp._udp.north-america.pool.ntp.org(SRV)
 - 000024.635|dns |2|00|Miss in All DNS cache for _ntp._udp.north-america.pool.ntp.org.nostrand.net(SRV)
 - 000024.661|dns |2|00|doDnsLookupForList for record SRV: no match found for '_ntp._udp.north-america.pool.ntp.org'
 - 000024.661|dns |2|00|Added Negative DNS cache entry for _ntp._udp.north-america.pool.ntp.org(SRV) expires in 3600 seconds
 - 000024.661|dns |2|00|Found DNS cache entry for _ntp._udp.north-america.pool.ntp.org(SRV)
 - 000024.662|dns |2|00|Miss in All DNS cache for north-america.pool.ntp.org(A)
 - 000024.662|dns |2|00|Miss in All DNS cache for north-america.pool.ntp.org.nostrand.net(A)
 - 000024.665|dns |2|00|Added Dynamic DNS cache entry for north-america.pool.ntp.org(A) expires in 29 seconds
 - 0103151808|dns |2|00|doDnsLookupForList for record SRV: no match found for '_ntp._udp.north-america.pool.ntp.org'
 - 0103151808|dns |2|00|dnsCacheAdd: duplicate entry in Negative DNS cache for _ntp._udp.north-america.pool.ntp.org(SRV) found.

- 0103151808|dns |2|00|Trimming Negative DNS cache for _ntp._udp.north-america.pool.ntp.org(SRV) (1357247888 > 1357237880)
- 0103151808|dns |2|00|Added Negative DNS cache entry for _ntp._udp.north-america.pool.ntp.org(SRV) expires in 3600 seconds
- 0103151810|dns |2|00|Miss in All DNS cache for _sipinternaltls._tcp.bertrand.net(SRV)
- 0103151810|dns |2|00|Trimming Dynamic DNS cache for _ntp._udp.north-america.pool.ntp.org(SRV) (1357247890 > 0)
- 0103151810|dns |2|00|Added Dynamic DNS cache entry for _sipinternaltls._tcp.bertrand.net(SRV) expires in 3600 seconds
- 0103151810|dns |2|00|Miss in All DNS cache for pool.bertrand.net.(A)
- 0103151810|dns |2|00|Miss in All DNS cache for pool(A)
- 0103151810|dns |2|00|Retaining Dynamic DNS cache for north-america.pool.ntp.org(A)
- 0103151810|dns |2|00|Added Dynamic DNS cache entry for pool.bertrand.net.(A) expires in 3600 seconds
- 0103151810|dns |2|00|doDnsLookupForList for record SRV: no match found for '_sipinternal._tcp.bertrand.net'
- 0103151810|dns |2|00|Retaining Negative DNS cache for _ntp._udp.north-america.pool.ntp.org(SRV)
- 0103151810|dns |2|00|Trimming Negative DNS cache for _sipinternaltls._tcp.bertrand.net(SRV) (1357247890 > 0)
- 0103151810|dns |2|00|Added Negative DNS cache entry for _sipinternal._tcp.bertrand.net(SRV) expires in 3600 seconds
- 0103151810|dns |2|00|Found DNS cache entry for _sipinternal._tcp.bertrand.net(SRV)
- 0103151810|dns |2|00|Miss in All DNS cache for _sip._tls.bertrand.net(SRV)
- 0103151810|dns |2|00|Miss in All DNS cache for _sip._tcp.bertrand.net(SRV)
- 0103151810|dns |2|00|Added Dynamic DNS cache entry for _sip._tls.bertrand.net(SRV) expires in 3600 seconds
- 0103151810|dns |2|00|Hit in Dynamic DNS cache for pool.bertrand.net.(A) expires in 3600 seconds
- 0103151810|dns |2|00|doDnsLookupForList for record SRV: no match found for '_sip._tcp.bertrand.net'
- 0103151810|dns |2|00|Retaining Negative DNS cache for _ntp._udp.north-america.pool.ntp.org(SRV)
- 0103151810|dns |2|00|Trimming Negative DNS cache for _sipinternaltls._tcp.bertrand.net(SRV) (1357247890 > 0)
- 0103151810|dns |2|00|Retaining Negative DNS cache for _sipinternal._tcp.bertrand.net(SRV)
- 0103151810|dns |2|00|Trimming Negative DNS cache for _sip._tls.bertrand.net(SRV) (1357247890 > 0)

- 0103151810|dns |2|00|Added Negative DNS cache entry for _sip._tcp.bertrand.net(SRV) expires in 3600 seconds
- 0103151810|dns |2|00|Found DNS cache entry for _sip._tcp.bertrand.net(SRV)
- 0103151810|dns |2|00|Miss in All DNS cache for sipinternal.bertrand.net(A)
- 0103151810|dns |2|00|Miss in All DNS cache for sipinternal(A)
- 0103151810|dns |2|00|doDnsLookupForList for record A: no match found for 'sipinternal.bertrand.net'
- 0103151810|dns |2|00|Trimming Negative DNS cache for north-america.pool.ntp.org(A) (1357247890 > 0)
- 0103151810|dns |2|00|Trimming Negative DNS cache for pool.bertrand.net.(A) (1357247890 > 0)
- 0103151810|dns |2|00|Added Negative DNS cache entry for sipinternal.bertrand.net(A) expires in 3600 seconds
- 0103151810|dns |2|00|Found DNS cache entry for sipinternal.bertrand.net(A)
-
- log.level.change.dns = "3"
 - 000024.661|dns |3|00|DNS lookup for (SRV) '_ntp._udp.north-america.pool.ntp.org' Server has no Answer
 - 000024.661|dns |3|00|DNS lookup for (SRV) '_ntp._udp.north-america.pool.ntp.org' found no match (err code: 4)
 - 000024.665|dns |3|00|DNS lookup for (A) 'north-america.pool.ntp.org'(108.61.73.244,207.32.191.59,75.157.237.28) TTL=29
 - 0103151808|dns |3|00|DNS lookup for (A) 'north-america.pool.ntp.org'(207.32.191.59,75.157.237.28,199.102.46.72) TTL=27
 - 0103151810|dns |3|00|DNS lookup for (SRV) '_sipinternaltls._tcp.bertrand.net'() TTL=3600
 - 0103151810|dns |3|00|DNS lookup for (A) 'pool.bertrand.net.'(192.168.3.17) TTL=3600
 - 0103151810|dns |3|00|DNS lookup for (SRV) '_sipinternal._tcp.bertrand.net' Server has no Answer
 - 0103151810|dns |3|00|DNS lookup for (SRV) '_sipinternal._tcp.bertrand.net' found no match (err code: 4)
 - 0103151810|dns |3|00|DNS lookup for (SRV) '_sip._tls.bertrand.net'() TTL=3600
 - 0103151810|dns |3|00|DNS lookup for (SRV) '_sip._tcp.bertrand.net' Server has no Answer
 - 0103151810|dns |3|00|DNS lookup for (SRV) '_sip._tcp.bertrand.net' found no match (err code: 4)
 - 0103151810|dns |3|00|DNS lookup for (A) 'sipinternal.bertrand.net' Server has no Answer
 - 0103151810|dns |3|00|DNS lookup for (A) 'sipinternal.bertrand.net' found no match (err code: 4)
 -



- log.level.change.dns ="4"
- log.level.change.dns ="5"
- log.level.change.dns ="6"

Dot1x (log.level.change.dot1x)

- Direct [*] Level entries:
 - 000011.600|dot1x|*|01|Initial log entry. Current logging level 3
- log.level.change.dot1x="1"
- log.level.change.dot1x ="2"
- log.level.change.dot1x ="3"
 - 000011.601|dot1x|3|01|dot1xWpaSupplicantcommand [PING] try to open control interface...attempt 1
 - 000011.701|dot1x|3|01|dot1xWpaSupplicantcommand [PING] try to open control interface...attempt 2
 - 000011.801|dot1x|3|01|dot1xWpaSupplicantcommand [PING] try to open control interface...attempt 3
 - 000011.902|dot1x|3|01|Failed to establish socket for dot1xWpaSupplicantcommand [PING] control interface.
 - 000011.904|dot1x|3|01|wpa_supplicant configure completed.
 - 000013.820|dot1x|3|01|wpa_supplicant try to open monitoring control interface...
 - 000013.820|dot1x|3|01|wpa_supplicant try to open monitoring control interface...attempt 1
 - 000014.320|dot1x|3|01|wpa_supplicant monitoring control interface opened.
 - 000014.321|dot1x|3|01|wpa_supplicant monitoring control interface attached.
- log.level.change.dot1x ="4"
 - 1227203503|dot1x|4|01|Disconnected
- log.level.change.dot1x ="5"
- log.level.change.dot1x ="6"

EFK (log.level.change.efk)

- Direct [*] Level entries:
- log.level.change.efk="1"
- log.level.change.efk ="2"
- log.level.change.efk ="3"
- log.level.change.efk ="4"
- log.level.change.efk ="5"
- log.level.change.efk ="6"

Ethernet Filter (log.level.change.ethf)

- Direct [*] Level entries:
- log.level.change.ethf="1"
- log.level.change.ethf ="2"

- log.level.change.ethf ="3"
- log.level.change.ethf ="4"
- log.level.change.ethf ="5"
- log.level.change.ethf ="6"

Exchange Client (log.level.change.ec)

- Direct [*] Level entries:
- log.level.change.ec ="1"
- log.level.change.ec ="2"
- log.level.change.ec ="3"
- log.level.change.ec ="4"
- log.level.change.ec ="5"
- log.level.change.ec ="6"

Headset (log.level.change.hset)

- Direct [*] Level entries:
- log.level.change.hset ="1"
 - 000019.568|hset |1|00|AppHeadsetMgrC::getDesiredHeadset choose digital headset first.
 - 000019.568|hset |1|00|AppHeadsetMgrC::getDesiredHeadset choose bluetooth headset.
 - 000019.568|hset |1|00|(SoCoreHeadsetC::findByType) pList(a71130) found type(4)
 - 000019.568|hset |1|00|(SoCoreHeadsetC::findByType) pList(a71130) found type(0)
 - 000019.568|hset |1|00|(SoCoreHeadsetC::freeAppHeadsetInfoList) pList(a726f0)
 - 000019.568|hset |1|00|AppHeadsetMgrC::handleHeadsetStatusChange: leaving m_pActiveHeadsetInfo (0xe160a0)
 - 000019.568|hset |1|00|(SoCoreHeadsetC::findByType) pList(a71130) found type(0)
 - 000019.568|hset |1|00|(AppHeadsetMgrC::isVisible) type(0) returns (0)
 - 000019.568|hset |1|00|(SoCoreHeadsetC::findByType) pList(a71130) found type(4)
 - 000019.568|hset |1|00|(AppHeadsetMgrC::isVisible) type(4) returns (0)
- log.level.change.hset ="2"
 - 000019.568|hset |2|00|AppHeadsetMgrC::handleHeadsetStatusChange: activeHeadset old[0xdfbb08]=(6)GenericAnalog en(1)ac(1)vi(0) new[0xe160a0]=(6)GenericAnalog en(1)ac(1)vi(0)
 -
- log.level.change.hset ="3"
- log.level.change.hset ="4"
- log.level.change.hset ="5"
- log.level.change.hset ="6"

HTTP Auth (log.level.change.httpa)

- Direct [*] Level entries:

- log.level.change.httpa="1"
- log.level.change.httpa ="2"
- log.level.change.httpa ="3"
- log.level.change.httpa ="4"
- log.level.change.httpa ="5"
- log.level.change.httpa ="6"

HTTP Server (log.level.change.httpd)

- Direct [*] Level entries:
- log.level.change.httpd="1"
- log.level.change.httpd ="2"
- log.level.change.httpd ="3"
- log.level.change.httpd ="4"
- log.level.change.httpd ="5"
- log.level.change.httpd ="6"

HTTP TA (log.level.change.ht)

- Direct [*] Level entries:
- log.level.change.ht="1"
- log.level.change.ht ="2"
- log.level.change.ht ="3"
- log.level.change.ht ="4"
- log.level.change.ht ="5"
- log.level.change.ht ="6"

HW Desc (log.level.change.hw)

- Direct [*] Level entries:
 - 000010.556|hw |*|01|Initial log entry. Current logging level 4
- log.level.change.hw="1"
- log.level.change.hw ="2"
 - 000020.211|hw |2|00|rtosLinuxTask: tBluetoothDBusP - stack start 0x429ce000 size 0x10000
 - 000024.580|hw |2|00|rtosLinuxTask: tInitSo - stack start 0x429de000 size 0x10000
 - 000024.596|hw |2|00|rtosLinuxTask: tSntpGet - stack start 0x429ee000 size 0x10000
 - 000024.605|hw |2|00|rtosLinuxTask: tsipUDPTask - stack start 0x429fe000 size 0x10000
 - 000024.605|hw |2|00|rtosLinuxTask: tICMPTask - stack start 0x42a0e000 size 0x10000
 - 000024.607|hw |2|00|rtosLinuxTask: tsipTCPTask - stack start 0x42a1e000 size 0x10000
 - 0103113120|hw |2|00|rtosLinuxTask: tNWIF1 - stack start 0x42a34000 size 0x10000
 - 0103113120|hw |2|00|rtosLinuxTask: tNWIF2 - stack start 0x42a44000 size 0x10000

- 0103113120|hw |2|00|rtosLinuxTask: tOaiP - stack start 0x42a55000 size 0x10000
- 0103151806|hw |2|00|rtosLinuxTask: tDhin - stack start 0x429ee000 size 0x10000
- 0103151810|hw |2|00|rtosLinuxTask: tTCPnt165 - stack start 0x42a67000 size 0x10000
- 0103151813|hw |2|00|rtosLinuxTask: tTCPnt158 - stack start 0x42a78000 size 0x10000
- 0103151815|hw |2|00|rtosLinuxTask: tBCpy001 - stack start 0x42a67000 size 0x10000
- 0103151815|hw |2|00|rtosLinuxTask: tBCpy002 - stack start 0x42a67000 size 0x10000
- 0103151815|hw |2|00|rtosLinuxTask: tBCpy003 - stack start 0x42a67000 size 0x10000
- 0103151815|hw |2|00|rtosLinuxTask: tUpCore - stack start 0x42a67000 size 0x10000
-
- log.level.change.hw ="3"
- log.level.change.hw ="4"
- log.level.change.hw ="5"
- log.level.change.hw ="6"

HW Signal (log.level.change.sig)

- Direct [*] Level entries:
 - 1227203043 sig * 1 Initial log entry. Current logging level 3
- log.level.change.sig ="1"
- log.level.change.sig ="2"
- log.level.change.sig ="3"
 - 1227203043 sig 3 1 hwSigParseRemove: found key Sig_4.
- log.level.change.sig ="4"
- log.level.change.sig ="5"
- log.level.change.sig ="6"

Idle Browser (log.level.change.ib)

- Direct [*] Level entries:
- log.level.change.ib ="1"
- log.level.change.ib ="2"
- log.level.change.ib ="3"
- log.level.change.ib ="4"
- log.level.change.ib ="5"
- log.level.change.ib ="6"

Key Observer (log.level.change.key)

- Direct [*] Level entries:
 - 000010.559|key |*|01|Initial log entry. Current logging level 4
- log.level.change.key ="1"
- log.level.change.key ="2"
- log.level.change.key ="3"

- log.level.change.key = "4"
- log.level.change.key = "5"
- log.level.change.key = "6"

LDAP (log.level.change.ldap)

- Direct [*] Level entries:
- log.level.change.ldap="1"
 - 0103113120|ldap |1|00|ldapCfg::lookupHost:No srvLookup host=<192.168.3.15> port=<389>
 - 0103113120|ldap |1|00|ldapData::runCmd: wlanModeHighThroughput Id(7)
 - 0103113120|ldap |1|00|ldapData::queryResults:Sort-Yes Persist-No VLV-Yes
 - 0103113120|ldap |1|00|ldapCfg::show:<LDAP configuration:> status=<1>
 - 0103113120|ldap |1|00| <server version=3> <sort:ctrl=0x4-cfg=0x0> <vlv=Yes> <vrCrt=Yes>
 - 0103113120|ldap |1|00| <host=ldap://192.168.3.15> <pfix=ldap://> <port=389> <trans=tcp> <bindOnInit=Yes>
 - 0103113120|ldap |1|00| <baseDN=CN=Users, DC=bertrand, DC=net> <filterPrefix=(objectclass=person)> <sortOrder=sn> <invSortOrder=NULL>
 - 0103113120|ldap |1|00|ldapCfg::getCaFile:LDAP:CA filepath = /ffs0/ca1.crt
 - 0103113120|ldap |1|00|ldapCfg::getCaFile:LDAP:CA filepath = /ffs0/ca1.crt
 - 0103113120|ldap |1|00| <attrib=givenName,sn,telephoneNumber> <sub> </ffs0/ca1.crt>
 - 0103113120|ldap |1|00| <persistView=No> <persistSearch=No>
 - 0103113120|ldap |1|00| <backgroundSyncPeriod=0> <autoQuerySubmitTimeout=0>
 - 0103113120|ldap |1|00| <domain=bertrand.net> <user=ldapuser> <pass=***>
 - 0103113120|ldap |1|00|ldapCfg::showAttr: Attributes:
 - 0103113120|ldap |1|00|ldapCfg::showAttr: [0] <name=givenName><label=First><type=first_name><filter=><sticky=No><srch=Yes>
 - 0103113120|ldap |1|00|ldapCfg::showAttr: [1] <name=sn><label=Last><type=last_name><filter=><sticky=No><srch=No>
 - 0103113120|ldap |1|00|ldapCfg::showAttr: [2] <name=telephoneNumber><label=Telephone><type=phone_number><filter=><sticky=No><srch=No>
 - 0103113120|ldap |1|00|cDynamicData::finalizeInit:finalizeInit state=<4>
 - 0103113120|ldap |1|00|ldapData::runCmd: wlanModeStandby Id(7)
- log.level.change.ldap = "2"
- log.level.change.ldap = "3"
 - 0103113120|ldap |3|00|ldapData::ldapConnBind:Ntlm Version Mode = 3:NTLMv2
 - 0103113120|ldap |3|00|ldapData::ldapConnBind:ldap_sasl_ntlm_ver_bind_s domain=<BERTRAND.NET> user=<ldapuser>
- log.level.change.ldap = "4"
- log.level.change.ldap = "5"

- log.level.change.ldap ="6"

License (log.level.change.lic)

- Direct [*] Level entries:
- log.level.change.lic="1"
 - log.level.change.lic ="2"
 - 0103151815|lic |2|00|cfgCfsKeysUpdateLicenseParse: URL 000000000000-license.cfg
 - 0103151815|lic |2|00|cfgCfsKeysUpdateLicenseParse: URL 00907a0cdb48-license.cfg
- log.level.change.lic ="3"
 - 0103151815|lic |3|00|cfgCfsKeysUpdate: Using boot server root
 - 0103151815|lic |3|00|cfgCfsKeysUpdateLicenseParse: Error transferring file, result 0xffffffff 0
 - 0103151815|lic |3|00|cfgCfsKeysUpdate: 0 keys updated
- log.level.change.lic ="4"
- log.level.change.lic ="5"
- log.level.change.lic ="6"

Logging (log.level.change.log)

- Direct [*] Level entries:
 - 000024.596|log |*|00|Install file upload callback for 'so'
 - 000010.522|log |*|01|Install file upload callback for 'Updater'
- log.level.change.log="1"
 - 0103151808|log |1|00|requesting DNS lookup now
 - 0103151808|log |1|00|syslogNetReqThread: MsgXResolveSyslogServer
 - 0103151808|log |1|00|UtilLogServerC:: creating UDP socket 164
 -
- log.level.change.log ="2"
 - 0103151808|log |2|00|syslog server '192.168.3.15' kept 192.168.3.15 at 0
- log.level.change.log ="3"
 - 000019.602|log |3|00|Did not upload log, required callback not required with UtilLogServerC.
 - 0103113120|log |3|00|11 fifo log files have not been uploaded. Total 11.
- log.level.change.log ="4"
 - 000010.607|log |4|01|UtilLogC:: syslog sendto on UDP socket to '192.168.3.15' failed
- log.level.change.log ="5"
- log.level.change.log ="6"

Media Recorder (log.level.change.cmr)

- Direct [*] Level entries:
- log.level.change.cmr="1"
- log.level.change.cmr ="2"
- log.level.change.cmr ="3"

- log.level.change.cmr ="4"
- log.level.change.cmr ="5"
- log.level.change.cmr ="6"

Micro Browser (log.level.change.mb)

- Direct [*] Level entries:
- log.level.change.mb="1"
- log.level.change.mb ="2"
- log.level.change.mb ="3"
- log.level.change.mb ="4"
- log.level.change.mb ="5"
- log.level.change.mb ="6"

Network (log.level.change.net)

- Direct [*] Level entries:
- log.level.change.net="1"
- log.level.change.net ="2"
- log.level.change.net ="3"
- log.level.change.net ="4"
- log.level.change.net ="5"
- log.level.change.net ="6"

Niche (log.level.change.niche)

- Direct [*] Level entries:
- log.level.change.niche="1"
- log.level.change.niche ="2"
- log.level.change.niche ="3"
- log.level.change.niche ="4"
- log.level.change.niche ="5"
- log.level.change.niche ="6"

OAI Protocol (log.level.change.oaip)

- Direct [*] Level entries:
 - 0103113120|oaip |*|00|Initial log entry. Current logging level 1
- log.level.change.oaip="1"
 - 0103113120|oaip |1|00|[OaiProtocolC]: MsgID 126
 - 0103113120|oaip |1|00|[OaiProtocolC]: MsgID 101
 - 0103113120|oaip |1|00|[OaiProtocolC]: MsgID 0
 - 0103151806|oaip |1|00|[OaiProtocolC]: MsgID 6
 - 0103151809|oaip |1|00|[OaiProtocolC]: MsgID 115
- log.level.change.oaip ="2"
 - 0103113120|oaip |2|00|[OaiProtocolC]: State HALTED

- 0103113120|oaip |2|00|[OaiProtocolC]: State 0 - Event 5
- 0103151809|oaip |2|00|[OaiProtocolC]: State 1 - Event 101
- 0103113120|oaip |2|00|[OaiProtocolC]: State REGISTERING
- 0103113120|oaip |2|00|oaiNetIoC::Start
- log.level.change.oaip ="3"
- log.level.change ="4"
- log.level.change.oaip ="5"
- log.level.change.oaip ="6"

OCSP (log.level.change.ocsp)

- Direct [*] Level entries:
- log.level.change.ocsp ="1"
- log.level.change.ocsp ="2"
- log.level.change.ocsp ="3"
- log.level.change.ocsp ="4"
- log.level.change.ocsp ="5"
- log.level.change.ocsp ="6"

On Screen Display (log.level.change.osd)

- Direct [*] Level entries:
 - 0103151806|osd |*|00|Initial log entry. Current logging level 4
- log.level.change.osd ="1"
- log.level.change.osd ="2"
 - 0103151807|osd |2|00|Nuance XT9 is disabled
 - 0103151807|osd |2|00|Database is set to 00907a0cdb48
- log.level.change.osd ="3"
 - 0103151807|osd |3|00|osd Connected to SPIP Core application at 127.0.0.1:10010
 - 0103151807|osd |3|00|Database name changed to 00907a0cdb48
- log.level.change.osd ="4"
- log.level.change.osd ="5"
- log.level.change.osd ="6"

PDC (log.level.change.pdc)

- Direct [*] Level entries:
- log.level.change.pdc ="1"
- log.level.change.pdc ="2"
- log.level.change.pdc ="3"
- log.level.change.pdc ="4"
- log.level.change.pdc ="5"
- log.level.change.pdc ="6"

PMT (log.level.change.pmt)

- Direct [*] Level entries:
- log.level.change.pmt="1"
- log.level.change.pmt ="2"
- log.level.change.pmt ="3"
 - 0103151814|pmt |3|00|SSH tunnel gateway server: voip-diagnostics.polycom.com
 - 0103151814|pmt |3|00|SSH tunnel gateway port: 22
 - 0103151814|pmt |3|00|SSH tunnel gateway server fingerprint: 829ce55c75dbda93742fcc9939c962ae
 - 0103151814|pmt |3|00|SSH tunnel gateway user: PolycomIPPhone
 - 0103151814|pmt |3|00|SSH tunnel using default password
- log.level.change.pmt ="4"
- log.level.change.pmt ="5"
- log.level.change.pmt ="6"

Pnet (log.level.change.pnetm)

- Direct [*] Level entries:
- log.level.change.pnetm="1"
- log.level.change.pnetm ="2"
- log.level.change.pnetm ="3"
- log.level.change.pnetm ="4"
- log.level.change.pnetm ="5"
- log.level.change.pnetm ="6"

Poll (log.level.change.poll)

- Direct [*] Level entries:
- log.level.change.poll="1"
- log.level.change.poll ="2"
- log.level.change.poll ="3"
- log.level.change.poll ="4"
- log.level.change.poll ="5"
- log.level.change.poll ="6"

Power Saving (log.level.change.pwrsv)

- Direct [*] Level entries:
- log.level.change.pwrsv="1"
- log.level.change.pwrsv ="2"
- log.level.change.pwrsv ="3"
- log.level.change.pwrsv ="4"
- log.level.change.pwrsv ="5"
- log.level.change.pwrsv ="6"

PPS (log.level.change.pps)

- Direct [*] Level entries:
- log.level.change.pps="1"
 - 000024.725|pps |1|00|[CTimer100Management::OnEvSendMessage] wlanModeHighThroughput Id(4)
 - 0103151810|pps |1|00|wlanModeStandby Id(4)
- log.level.change.pps ="2"
 - 000024.608|pps |2|00|[PpsHybridC]: SipSetOption(SipAsBandwidth) (448)
 - 000024.608|pps |2|00|[PpsHybridC]: SipSetOption(SipAcceptMissingVideoFmtp) (448)
 - 000024.608|pps |2|00|[PpsHybridC]: launch: setting SipSdpNewType to 1
 - 000024.608|pps |2|00|[PpsHybridC]: launch: setting Session timer support 0
 - 000024.608|pps |2|00|[PpsHybridC]: launch: setting useSendonlyHold to 1
 - 000024.609|pps |2|00|[PpsHybridC]: User-Agent SpectraLink-SL_8450-UA/4.2.1.0003
 - 000024.609|pps |2|00|[PpsHybridC]: launch: setting Realm to PolycomSPIP
 - 000024.610|pps |2|00|[PpsHybridC::AcceptLangString]: returning [en] to stack.
 - 000024.679|pps |2|00|[PpsHybridC]: ncas2PpsRegister U(505) D(Greg) S(0xe7cf50) R(1) Ix(0) CA(0) TP()
 - 000024.679|pps |2|00|[PpsHybridC]: ncas2PpsRegister() WLAN mode is set to HighThroughput for SIP and SIP Ctrl AppID:(3)
 - 000024.687|pps |2|00|[PpsHybridC]: OnEvProxyList Sz[1]
 - 000024.688|pps |2|00|[PpsHybridC]: OnEvNewWorkingServer [0] [-1] [0] [0/1]
 - 000024.706|pps |2|00|[PpsHybridC]: OnEvRegistrarUpdate User(0) Server(0) State(1) Expire(0) Working(1)
 - 0103151806|pps |2|00|[PpsHybridC]: OnEvRegistrarUpdate User(0) Server(0) State(2) Expire(1800) Working(1)
 - 000024.727|pps |2|00|[PpsHybridC]: ncas2PpsRegister U(sip:greg@bertrand.net) D(Gregory Bertrand) S(0xe7d1f0) R(1) Ix(1) CA(0) TP()
 - 0103151806|pps |2|00|[PpsHybridC]: OnEvServerIPList Usr[0] Sz[1]
 - 0103151806|pps |2|00|[PpsHybridC]: OnEvWorkingProxy Usr[0]
- log.level.change.pps ="3"
 - 000024.609|pps |3|00|SIP MTLS disabled
 - 000024.599|pps |3|00|[PpsHybridC]: Feature 'Warning Header' is disabled.
 - 000024.609|pps |3|00|SIP MTLS disabled
 - 000024.680|pps |3|00|[PpsHybridC]: ppsProcMsgPpsNcas user 0 Register
 - 000024.689|pps |3|00|[PpsHybridC]:ncas2PpsRestart Accepted
 - 000024.728|pps |3|00|[PpsHybridC]: ppsProcMsgPpsNcas user 1 Register
- log.level.change.pps ="4"
- log.level.change.pps ="5"
- log.level.change.pps ="6"

Presence (log.level.change.pres)

- Direct [*] Level entries:

- log.level.change.pres="1"
- log.level.change.pres="2"
- log.level.change.pres="3"
- log.level.change.pres="4"
- log.level.change.pres="5"
- log.level.change.pres="6"

Presentation (log.level.change.pgui)

- Direct [*] Level entries:
 - 0103151806|pgui |*|00|Qt Mouse driver created.
- log.level.change.pgui="1"
 - 000024.111|pgui |1|00|event Action:StatusReport, data info=1;
 - 0103151815|pgui |1|00|event backgroundimg, data path=;info=true;
- log.level.change.pgui="2"
 - 000020.545|pgui |2|00|Test Automation Flag is set to 0
 - 000020.581|pgui |2|00|24hrs format is set to 1
 - 000020.581|pgui |2|00|Nuance XT9 is disabled
 - 0103151806|pgui |2|00|Nuance XT9 is disabled
 - 0103151806|pgui |2|00|Database is set to
 - 0103151806|pgui |2|00|Environment variable TZ is set to CST6:0:0CDT,J69/2:0:0,J307/2:0:0
 - 0103151806|pgui |2|00|Database is set to 00907a0cdb48
 - 0103151815|pgui |2|00|Top level w is home-screen
- log.level.change.pgui="3"
 - 000019.954|pgui |3|00|spipgui Connected to SPIP Core application at 127.0.0.1:10010
 - 000019.957|pgui |3|00|CoreCom Error Detected: The connection was refused by the peer (or timed out)
 - 000022.711|pgui |3|00|QWS Window Event from , event = QWSServer::Create (A new window has been created (by the QWidget constructor).
 - 0103151806|pgui |3|00|Database name changed to
 - 0103151806|pgui |3|00|QWS Window Event from spipgui, event = QWSServer::Active (The window has become the active window (i.e., it has keyboard focus).)
 - 0103151806|pgui |3|00|QWS Window Event from spipgui, event = QWSServer::Show (The window has been shown using the QWidget::show() function or similar.)
 - 0103151806|pgui |3|00|QWS Window Event from spipgui, event = QWSServer::Raise (The window has been raised to the top of the desktop.)
 - 0103151806|pgui |3|00|CPolyInputMethod:: set mouse disabled = false
 - 0103151806|pgui |3|00|Database name changed to 00907a0cdb48
 - 0103151809|pgui |3|00|insertItemsFromNotification: inserted 28 items
 - 0103151827|pgui |3|137|QWS Window Event from , event = QWSServer::Create (A new window has been created (by the QWidget constructor).

- 0103151827|pgui |3|137|QWS Window Event from dialog, event = QWSServer::Name (The window has been named.)
- 0103151827|pgui |3|137|QWS Window Event from dialog, event = QWSServer::Active (The window has become the active window (i.e., it has keyboard focus).)
- 0103151827|pgui |3|137|QWS Window Event from dialog, event = QWSServer::Show (The window has been shown using the QWidget::show() function or similar.)
- 0103151827|pgui |3|137|QWS Window Event from dialog, event = QWSServer::Geometry (The window has changed size or position.)
- 0103151837|pgui |3|179|CPolyInputMethod:: set mouse disabled = false
- 0103151842|pgui |3|179|QWS Window Event from dialog, event = QWSServer::Lower (The window has been lowered.)
- 0103151842|pgui |3|179|QWS Window Event from dialog, event = QWSServer::Hide (The window has been hidden using the QWidget::hide() function.)
- log.level.change.pgui ="4"
- log.level.change.pgui ="5"
- log.level.change.pgui ="6"

PTT (log.level.change.ptt)

- Direct [*] Level entries:
- log.level.change.ptt="1"
- log.level.change.ptt ="2"
 - 103113120 ptt 2 0 [PpsPttC]::ppsProcMsg(): MsgPpsNcasRegister : Ptt Appld(0)
 - 103113120 ptt 2 0 " [PpsPttC]::ppsProcMsg(): MsgPpsNcasRegister Mode=wlanModeStandby, Release Interval 650ms,Ptt Appld 6"
 - 103113120 ptt 2 0 [PpsPttC]: ncas2PpsRegister U(PTT) D() S(0xe7d580) R(1) Ix(12) CA(0) TP()
- log.level.change.ptt ="3"
 - 103113120 ptt 3 0 [PpsPttC]: configuring Channel <1>
 - 103113120 ptt 3 0 [PpsPttC]: configuring Channel <2>
 - 103113120 ptt 3 0 [PpsPttC]: configuring Channel <24>
 - 103113120 ptt 3 0 [PpsPttC]: configuring Channel <25>
 - 103113120 ptt 3 0 [PpsPttC]: ncas2PpsRegister Accepted
 - 103113120 ptt 3 0 [PpsPttC]: OnEvReg Accepted
 - 103113120 ptt 3 0 "[PpsPttC]: Using Compatibility Configuration for PTT mode Codec=G726QI, PayloadSize=30"
- log.level.change.ptt ="4"
- log.level.change.ptt ="5"
- log.level.change.ptt ="6"

Push (log.level.change.push)

- Direct [*] Level entries:

- log.level.change.push="1"
- log.level.change.push="2"
- log.level.change.push="3"
- log.level.change.push="4"
- log.level.change.push="5"
- log.level.change.push="6"

RAM Disk (log.level.change.rdisk)

- Direct [*] Level entries:
- log.level.change.rdisk="1"
- log.level.change.rdisk="2"
- log.level.change.rdisk="3"
- log.level.change.rdisk="4"
- log.level.change.rdisk="5"
- log.level.change.rdisk="6"

Resource Finder (log.level.change.res)

- Direct [*] Level entries:
- log.level.change.res="1"
- log.level.change.res="2"
- log.level.change.res="3"
 - 000019.984|res |3|00|[ResFinderC]: Download - Try to open /rfs0/Greg_Pensive.jpg.
 - 000019.984|res |3|00|[ResFinderC]: Download - Failed to open file /rfs0/Greg_Pensive.jpg, errno 0x2.
 - 103151815 res 3 0 [ResFinderC]: Download - Copy file Greg_Pensive.jpg from Greg_Pensive.jpg OK.
 - 103151814 res 3 0 [ResFinderC]: Download - Copy file SoundPointIPWelcome.wav from SoundPointIPWelcome.wav OK.
 - 103151814 res 3 0 "[ResFinderC]: Download - Failed to open file /rfs0/SoundPointIPWelcome.wav, errno 0x2."
 - 19.984 res 3 0 [ResFinderC]: Download - Try to open /rfs0/Greg_Pensive.jpg.
 - 103151814 res 3 0 [ResFinderC]: Download - Try to open /rfs0/SoundPointIPWelcome.wav.
 - 103151815 res 3 0 [ResQuotasC]: add2Quota - App 'background' Added: 12349 New Size (12349 bytes/614400 bytes)
 - 103151814 res 3 0 [ResQuotasC]: add2Quota - App 'tone&se' Added: 95926 New Size (95926 bytes/307200 bytes)
- log.level.change.res="4"
- log.level.change.res="5"
- log.level.change.res="6"

Real-Time Locating System (log.level.change.rtls)

- Direct [*] Level entries:
- log.level.change.rtls="1"
- log.level.change.rtls ="2"
- log.level.change.rtls ="3"
- log.level.change.rtls ="4"
- log.level.change.rtls ="5"
- log.level.change.rtls ="6"

Real-Time Operating System (log.level.change.rtos)

- Direct [*] Level entries:
- log.level.change.rtos="1"
- log.level.change.rtos ="2"
 - 103113120 rtos 2 0 "rtosSocketMulticastAdd() called, so 0x93, ipAddr 0xe0000174"
- log.level.change.rtos ="3"
- log.level.change.rtos ="4"
- log.level.change.rtos ="5"
- log.level.change.rtos ="6"

Scheduled (log.level.change.slog)

- Direct [*] Level entries:
- log.level.change.slog="1"
- log.level.change.slog ="2"
 - 000020.068|slog |2|00|##### Running showCpuLoad #####
 - 000020.069|slog |2|00|Cpu load is 0.0%, and the average is 0.0%.
 - 000020.351|slog |2|00|##### Running showBatteryStat #####
 - 000020.351|slog |2|00|Battery status: 1411 mA-Hr / 1750 mA-Hr (80%), 3928 (4046) mV, -375 mA, -1473mW
 - 103151831 slog 2 170 "Cpu load is 1.5%, and the average is 47.1%."
 - 103151816 slog 2 0 "Cpu load is 38.2%, and the average is 63.0%."
 - 103151846 slog 2 179 "Cpu load is 9.7%, and the average is 35.6%."
- log.level.change.slog ="3"
- log.level.change.slog ="4"
- log.level.change.slog ="5"
- log.level.change.slog ="6"

Security (log.level.change.sec)

- Direct [*] Level entries:
 - 10.556 sec * 1 Initial log entry. Current logging level 4
- log.level.change.sec="1"
- log.level.change.sec ="2"
- log.level.change.sec ="3"



- log.level.change.sec ="4"
- log.level.change.sec ="5"
- log.level.change.sec ="6"

Session Initiation Protocol (log.level.change.sip)

- Direct [*] Level entries:
 - 000024.681|sip |*|00|Sip Register Usr:505 Dsp:Greg Auth:'505' Inx:0
 - 000024.728|sip |*|00|Sip Register Usr:sip:greg@nostrand.net Dsp:Gregory Nostrand Auth:'Greg' Inx:1
 - 24.727 sip * 0 "Fast Boot Measurement Point: Ready for Call, uptime: 24.727 sec."
 - 24.681 sip * 0 Sip Register Usr:505 Dsp:Greg Auth:'505' Inx:0
- log.level.change.sip="1"
- log.level.change.sip ="2"
- log.level.change.sip ="3"
- log.level.change.sip ="4"
 - 103151810 sip 4 0 doDnsListLookup(tcp): doDnsSrvLookupForARecordList 'sip.bertrand.net' found no records.
 - 103151810 sip 4 0 doDnsListLookup(tcp): doDnsSrvLookupForARecordList 'sipexternal.bertrand.net' found no records.
 - 103151810 sip 4 0 doDnsListLookup(tcp): doDnsSrvLookupForARecordList 'sipinternal.bertrand.net' found no records.
 - 103151816 sip 4 0 "Registration failed User: greg, Error Code:480 Temporarily not available"
- log.level.change.sip ="5"
- log.level.change.sip ="6"

Secure real-time transport protocol (log.level.change.srtp)

- Direct [*] Level entries:
- log.level.change.srtp="1"
- log.level.change.srtp ="2"
- log.level.change.srtp ="3"
- log.level.change.srtp ="4"
- log.level.change.srtp ="5"
- log.level.change.srtp ="6"

Secure SHell Client (log.level.change.sshc)

- Direct [*] Level entries:
- log.level.change.sshc="1"
- log.level.change.sshc ="2"
- log.level.change.sshc ="3"
- log.level.change.sshc ="4"
- log.level.change.sshc ="5"

- log.level.change.sshc = "6"

SSPS (log.level.change.ssps)

- Direct [*] Level entries:
- log.level.change.ssps = "1"
- log.level.change.ssps = "2"
- log.level.change.ssps = "3"
- log.level.change.ssps = "4"
- log.level.change.ssps = "5"
- log.level.change.ssps = "6"

Support Objects (log.level.change.so)

- Direct [*] Level entries:
- log.level.change.so = "1"
 - 0103113120|so |1|00|SoNcasC::procMsg: Receiving MsgType 0x82b
 - 0103113120|so |2|00|[SoNcasC]: Icon Set Lines, 12,1
- log.level.change.so = "2"
 - 0103113120|so |2|00|User registration () [9-PTT]
- log.level.change.so = "3"
 - 0103113120|so |3|00|Channel <1> <Default> subscribed with <PTT> mode
 - 0103113120|so |3|00|Channel <2> <Channel 2> subscribed with <PTT> mode
 - 0103113120|so |3|00|Channel <24> <Priority> subscribed with <PTT> mode
 - 0103113120|so |3|00|Channel <25> <Emergency> subscribed with <PTT> mode
- log.level.change.so = "4"
- log.level.change.so = "5"
- log.level.change.so = "6"

Syslog (log.level.change.sys)

- Direct [*] Level entries:
- log.level.change.sys = "1"
- log.level.change.sys = "2"
- log.level.change.sys = "3"
- log.level.change.sys = "4"
- log.level.change.sys = "5"
- log.level.change.sys = "6"

TA (log.level.change.ta)

- Direct [*] Level entries:
- log.level.change.ta = "1"
- log.level.change.ta = "2"
- log.level.change.ta = "3"
- log.level.change.ta = "4"



- log.level.change.ta ="5"
- log.level.change.ta ="6"

TLS (log.level.change.tls)

- Direct [*] Level entries:
- log.level.change.tls="1"
- log.level.change.tls ="2"
- log.level.change.tls ="3"
- log.level.change.tls ="4"
- log.level.change.tls ="5"
- log.level.change.tls ="6"

USB (log.level.change.usb)

- Direct [*] Level entries:
- log.level.change.usb="1"
- log.level.change.usb ="2"
- log.level.change.usb ="3"
- log.level.change.usb ="4"
- log.level.change.usb ="5"
- log.level.change.usb ="6"

USB Dock (log.level.change.dock)

- Direct [*] Level entries:
- log.level.change.dock="1"
- log.level.change.dock ="2"
- log.level.change.dock ="3"
- log.level.change.dock ="4"
- log.level.change.dock ="5"
- log.level.change.dock ="6"

USB I/O (log.level.change.usbio)

- Direct [*] Level entries:
- log.level.change.usbio="1"
- log.level.change.usbio ="2"
- log.level.change.usbio ="3"
- log.level.change.usbio ="4"
- log.level.change.usbio ="5"
- log.level.change.usbio ="6"

Util Task (log.level.change.task)

- Direct [*] Level entries:
- log.level.change.task="1"

- log.level.change.task ="2"
- log.level.change.task ="3"
- log.level.change.task ="4"
- log.level.change.task ="5"
- log.level.change.task ="6"

Util-Main (log.level.change.utilm)

- Direct [*] Level entries:
- log.level.change.utilm ="1"
- log.level.change.utilm ="2"
- log.level.change.utilm ="3"
- log.level.change.utilm ="4"
- log.level.change.utilm ="5"
- log.level.change.utilm ="6"

Util-Trace (log.level.change.trace)

- Direct [*] Level entries:
- log.level.change.trace ="1"
- log.level.change.trace ="2"
- log.level.change.trace ="3"
- log.level.change.trace ="4"
- log.level.change.trace ="5"
- log.level.change.trace ="6"

Video Display (log.level.change.dis)

- Direct [*] Level entries:
- log.level.change.dis ="1"
- log.level.change.dis ="2"
- log.level.change.dis ="3"
- log.level.change.dis ="4"
- log.level.change.dis ="5"
- log.level.change.dis ="6"

Video Frame (log.level.change.cap)

- Direct [*] Level entries:
- log.level.change.cap ="1"
- log.level.change.cap ="2"
- log.level.change.cap ="3"
- log.level.change.cap ="4"
- log.level.change.cap ="5"
- log.level.change.cap ="6"

Wapp Mgr (log.level.change.wmgr)

- Direct [*] Level entries:
- log.level.change.wmgr="1"
- log.level.change.wmgr ="2"
- log.level.change.wmgr ="3"
- log.level.change.wmgr ="4"
- log.level.change.wmgr ="5"
- log.level.change.wmgr ="6"

Watch-dog (log.level.change.wdog)

- Direct [*] Level entries:
- log.level.change.wdog="1"
- log.level.change.wdog ="2"
- log.level.change.wdog ="3"
- log.level.change.wdog ="4"
- log.level.change.wdog ="5"
- log.level.change.wdog ="6"

WiFi Manager (log.level.change.wifi)

- Direct [*] Level entries:
- log.level.change.wifi="1"
- log.level.change.wifi ="2"
- log.level.change.wifi ="3"
- log.level.change.wifi ="4"
- log.level.change.wifi ="5"
- log.level.change.wifi ="6"

WLAN (log.level.change.wlan)

- Direct [*] Level entries:
- log.level.change.wlan="0"
 - 1309181315|wlan |0|00|DCA Continuous scan result update: 04fe.7f49.7e64 (Channel:6 Score:430 RSSI:-70 dBm Penalty:0 Reason:140) 04fe.7f49.c664 (Channel:6 Score:425 RSSI:-75 dBm Penalty:0 Reason:140)
 - 1309181315|wlan |0|00|DCA Continuous scan result update: 04fe.7f49.7e64 (Channel:6 Score:430 RSSI:-70 dBm Penalty:0 Reason:140) 04fe.7f49.c664 (Channel:6 Score:425 RSSI:-75 dBm Penalty:0 Reason:140)
 - 1309181315|wlan |0|00|DCA Continuous scan result update: 04fe.7f49.7e64 (Channel:6 Score:434 RSSI:-66 dBm Penalty:0 Reason:140) 04fe.7f49.c664 (Channel:6 Score:427 RSSI:-73 dBm Penalty:0 Reason:140)
 - DCA Continuous Scan data shows other AP (not the one associated to) info
- log.level.change.wlan="1"
- log.level.change.wlan ="2"

- 000250.534|wlan |2|00|Current Mode:HighThroughput,Mode
List:(2,StandBy,0ms),(3,HighThroughput,0ms),
- 000251.516|wlan |2|00|Current Mode:StandBy,Mode
List:(2,StandBy,0ms),(3,StandBy,0ms),
- 1211135858|wlan |2|00| [0103] AStat : AP d824.bd59.107e (-65 dBm), Pld size 20ms, Tx 64734, Rx 64739, Missed 0 (0.0%), Dropped 27 (0.0%), Jitter 7ms, ID 6, Cat Voice
- 1211141019|wlan |2|00| [018b] AThresh : AP d824.bd59.107e (-63 dBm), Pld size 20ms, Tx 98774, Rx 98779, Missed 0 (0.0%), Dropped 60 (4.4%), Jitter 2ms, ID 6, Cat Voice
- 1211141022|wlan |2|00| [07c2] NStat : d824.bd59.107e (-63 dBm), Tx 526625, Rx 523443, BTx 6, BRx 538, MTx 0, MRx 82, Tx Drop 33 (0.0 %), Tx Retry 9055 (0.3 %), Rx Retry 47372(0.3 %)
- 1211141017|wlan |2|00| [07c1] NThresh : d824.bd59.107e (-63 dBm), Tx 526361, Rx 523181, BTx 6, BRx 538, MTx 0, MRx 82, Tx Drop 33 (1.1 %), Tx Retry 9054 (1.5 %), Rx Retry 47371(25.7 %)
- 1211141916|wlan |2|00|Call Ended, AP d824.bd59.107e (-62 dBm)
- 1211141911|wlan |2|00|Call Started, AP d824.bd59.107e (-60 dBm)
- [AP RSSI Signal Strength, Payload size, TX packet count, RX packet count, RX Missed packet count and %, TX Dropped packet count and % Jitter in ms, Broadcast TX count, Broadcast RX count, Multicast TX count, Multicast RX count, TX retry count & %, RX count and %,]
- log.level.change.wlan ="3"
 - 1212105921|wlan |3|00|Successful Handoff to d824.bd4f.e81e(Channel:149 Score:424 RSSI:-76 dBm Penalty:0) from d824.bd58.cf2e(Channel:44 Score:426 RSSI:-74 dBm Penalty:0), Reason 160, Other Aps: d824.bd4f.e81e (Channel:149 Score:424 RSSI:-76 dBm Penalty:0 Reason:140), d824.bd4f.e8ae (Channel:36 Score:423 RSSI:-77 dBm Penalty:0 Reason:140), d824.bd58.bb1e (Channel:48 Score:417 RSSI:-83 dBm Penalty:0 Reason:140), TxPO:14 dBm, TxPN:16 dBm
 - 1211164637|wlan |3|00|Failed Handoff to d824.bd58.cf2e (Channel: 0 Score: 433 RSSI: -67 dBm Penalty: 0) with reason: 163 Previous Connected AP: d824.bd4f.e8ae (Channel: 36 Score: 419 RSSI: -81 dBm Penalty: 0), Original Handoff Reason: 160
 - [Succesful Handoff Roaming info, Failed Handoff info, To AP MAC RSSI Signal Strength, From AP MAC RSSI, channel, score, penalty, roam reason code, other AP info, Failed handoff To AP MAC RSSI, channel, score, penalty, reason code, original reason code,]
- log.level.change.wlan ="4"
- log.level.change.wlan ="5"
- log.level.change.wlan ="6"

eXtensible Messaging and Presence Protocol (log.level.change.xmpp)

- Direct [*] Level entries:
- log.level.change.xmpp="1"
- log.level.change.xmpp ="2"



- `log.level.change.xmpp = "3"`
- `log.level.change.xmpp = "4"`
- `log.level.change.xmpp = "5"`
- `log.level.change.xmpp = "6"`