

Introduction to PIVOT Pocket Clip

The PIVOT Pocket Clip is designed to snap onto the PIVOT:S (8742) and PIVOT:SC (8744) smartphone.

It handily clips a PIVOT smartphone to a pocket with the phone either on the inside or the outside of the pocket.



CAUTION: DO NOT CLIP TO BELT

THE PIVOT POCKET CLIP IS NOT DESIGNED TO BE CLIPPED TO A BELT OR OTHER THICK AND RIGID EDGE.

Contact Information

Spectralink Corporation

US Location

+1 800-775-5330
Spectralink Corporation
2560 55th Street
Boulder, CO 80301
USA
info@spectralink.com

Denmark Location

+45 7560 2850
Spectralink Europe ApS
Bygholm Soepark 21 E Stuen
8700 Horsens
Denmark
infoemea@spectralink.com

UK Location

+44 (0) 20 3769 9800
Spectralink Europe UK
329 Bracknell, Doncastle Road
Bracknell, Berkshire, RG12 8PE
United Kingdom
infoemea@spectralink.com

Copyright Notice

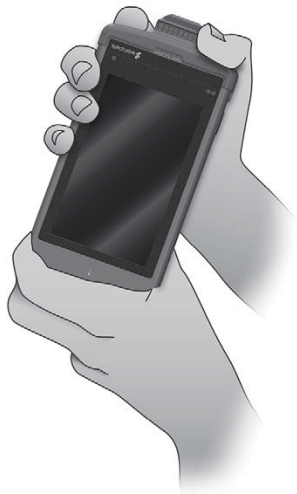
© 2016 Spectralink Corporation. All rights reserved under International and pan-American Copyright Conventions. Spectralink™, the Spectralink logo and the names and marks associated with Spectralink's products are trademarks and/or service marks of Spectralink Corporation and are common law marks in the United States and various other countries. All other trademarks are property of their respective owners. Do not remove (or allow any third party to remove) any Product identification, copyright or other notices. No part of the contents of this document may be copied, reproduced, or transmitted in any form or by any means, or translated into another language or format, in whole or part, without the express written consent of Spectralink Corporation.

Spectralink PIVOT
Pocket Clip



Attach clip to phone

Press clip down onto the phone.

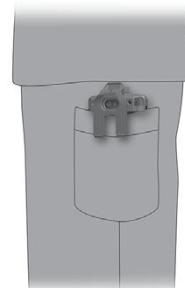


Clip to pants pocket

Outside

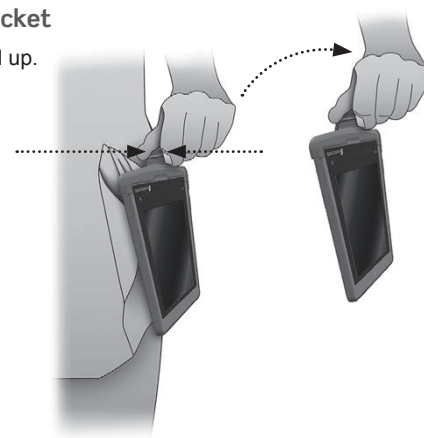


or inside



Remove clip from pocket

Squeeze clip and pull up.

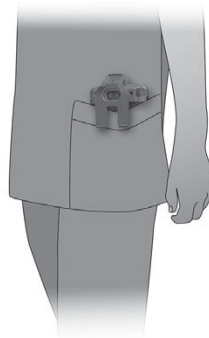


Clip to shirt pocket

Outside



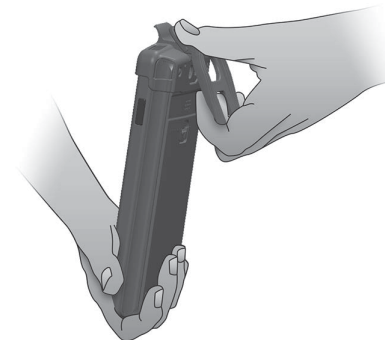
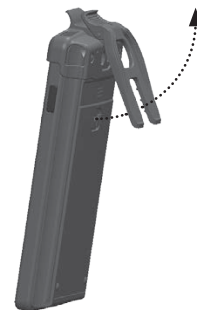
or inside



Remove clip from phone

1. Remove clip from pocket.

2. Grab back of clip securely and gently lift up.



Do NOT clip to belt

